



THE BALANCE OF PAYMENTS

Preliminary STATISTICAL UPDATE

March 2006

External Sector Statistics Unit
Economic Information & Publications Department
RESEARCH AND ECONOMIC PROGRAMMING DIVISION

BANK OF JAMAICA
P.O. Box 621
Kingston, Jamaica

TABLE OF CONTENTS

| | Pages |
|---------------------------------|--------------|
| External Trade | 1 |
| Exports..... | 7 |
| Garments..... | 8 |
| Bauxite..... | 10 |
| Selected Non -Traditionals..... | 12 |
| Tourism | 13 |
| Private Transfer flows..... | 17 |
| B. O. P. Reports..... | 19 |

| EXTERNAL TRADE US\$000 | | | | | | | | |
|---|---------------|----------------|--------------|--------------|-----------------|--------------------|---------------|--------------|
| | MAR 2005 | MAR 1/ 2006 | CHANGE | %CHANGE | JAN-MAR 2005 | JAN-MAR 1/ 2006 | CHANGE | %CHANGE |
| TOTAL GOODS EXPORTS(F.O.B) | 132245 | 203306 | 71061 | 53.7 | 381220 | 518074 | 136854 | 35.9 |
| TOTAL GOODS IMPORTS(C.I.F) | 425988 | 446703 | 20715 | 4.9 | 1127755 | 1388476 | 260721 | 23.1 |
| TRADE BALANCE | -293743 | -243397 | 50346 | 17.1 | -746535 | -870402 | -123867 | -16.6 |
| VALUE OF TOTAL GOODS EXPORTS US\$000 | | | | | | | | |
| | MAR 2005 | MAR 2006 | CHANGE | %CHANGE | JAN-MAR 2005 | JAN-MAR 2006 | CHANGE | %CHANGE |
| O.FOOD | 25178 | 31594 | 6416 | 25.5 | 58999 | 82362 | 23363 | 39.6 |
| 1.BEVER. & TOBAC | 6587 | 7295 | 708 | 10.7 | 18181 | 22849 | 4668 | 25.7 |
| 2.CRUDE MATS | 81157 | 107202 | 26045 | 32.1 | 239934 | 282511 | 42577 | 17.7 |
| 3.MINERAL FUELS | 2025 | 20802 | 18777 | 927.3 | 5152 | 59003 | 53851 | 1045.2 |
| 4.ANI.& VEG OILS | 8 | 16 | 8 | 0.0 | 25 | 19 | -6 | -24.0 |
| 5.CHEMICALS | 2205 | 18820 | 16615 | 753.5 | 17805 | 22969 | 5164 | 29.0 |
| 6.MANUF. GOODS | 1080 | 1612 | 532 | 49.3 | 2487 | 2991 | 504 | 20.3 |
| 7.MACH.& TRANSP. | 2511 | 2615 | 104 | 4.1 | 4473 | 7326 | 2853 | 63.8 |
| 8.MISC. MANUF | 1518 | 2467 | 949 | 62.5 | 4419 | 5408 | 989 | 22.4 |
| 9.MISC. COMMDS. | 0 | 0 | 0 | 0.0 | 0 | 0 | 0 | 0.0 |
| GENERAL MERCHANDISE EXPS. | 122269 | 192423 | 70154 | 57.4 | 351475 | 485438 | 133963 | 38.1 |
| FREEZONE EXPORTS | 3644 | 4243 | 599 | 16.4 | 10749 | 12716 | 1967 | 18.3 |
| GOODS PROCURED IN PORTS | 6332 | 6640 | 308 | 4.9 | 18996 | 19920 | 924 | 4.9 |
| TOTAL GOODS EXPORTS | 132245 | 203306 | 71061 | 53.7 | 381220 | 518074 | 136854 | 35.9 |
| TRADITIONAL & NON-TRADITIONAL EXPORTS US\$000 | | | | | | | | |
| | MAR 2005 | MAR 2006 | CHANGE | %CHANGE | JAN-MAR 2005 | JAN-MAR 2006 | CHANGE | %CHANGE |
| MAJOR TRAD. EXPORT | 94388 | 119391 | 25003 | 26.5 | 267782 | 315809 | 48027 | 17.9 |
| BAUXITE | 8567 | 10796 | 2229 | 26.0 | 25756 | 27472 | 1716 | 6.7 |
| ALUMINA | 71536 | 90327 | 18791 | 26.3 | 210596 | 240754 | 30158 | 14.3 |
| SUGAR | 14285 | 17210 | 2925 | 20.5 | 31430 | 44593 | 13163 | 41.9 |
| BANANAS | 0 | 1058 | 1058 | 0.0 | 0 | 2990 | 2990 | 0.0 |
| OTHER TRAD. EXPORT | 5198 | 8091 | 2893 | 55.7 | 15110 | 20919 | 5809 | 38.4 |
| CITRUS | 197 | 146 | -51 | -25.9 | 979 | 517 | -462 | -47.2 |
| COCOA | 126 | 186 | 60 | 47.6 | 431 | 443 | 12 | 2.8 |
| COFFEE | 1942 | 4121 | 2179 | 112.2 | 4454 | 8843 | 4389 | 98.5 |
| PIMENTO | 146 | 67 | -79 | 100.0 | 373 | 462 | 89 | 23.9 |
| RUM | 2540 | 3386 | 846 | 33.3 | 8325 | 10400 | 2075 | 24.9 |
| GYPSUM | 247 | 185 | -62 | 0.0 | 548 | 254 | -294 | -53.6 |
| NON-TRAD. EXPORTS | 19154 | 60802 | 41648 | 217.4 | 61322 | 137797 | 76475 | 124.7 |
| RE-EXPORTS | 3529 | 4139 | 610 | 17.3 | 7261 | 10913 | 3652 | 50.3 |
| GENERAL MERCHANDISE EXPS. | 122269 | 192423 | 70154 | 57.4 | 351475 | 485438 | 133963 | 38.1 |
| FREEZONE EXPORTS | 3644 | 4243 | 599 | 16.4 | 10749 | 12716 | 1967 | 18.3 |
| GOODS PROCURED IN PORTS | 6332 | 6640 | 308 | 4.9 | 18996 | 19920 | 924 | 4.9 |
| TOTAL GOODS EXPORTS | 132245 | 203306 | 71061 | 53.7 | 381220 | 518074 | 136854 | 35.9 |

VALUE OF GOODS IMPORTS BY S.I.T.C. US\$000

| | MAR 2005 | MAR1/ 2006 | CHANGE | %CHANGE | JAN-MAR 2005 | JAN-MAR1/ 2006 | CHANGE | %CHANGE |
|------------------------------------|---------------------|-----------------------|---------------|----------------|-------------------------|---------------------------|---------------|----------------|
| 0.FOOD | 46753 | 47177 | 424 | 0.9 | 139769 | 158646 | 18877 | 13.5 |
| 1.BEV. & TOBAC | 3725 | 5817 | 2092 | 56.2 | 12729 | 15499 | 2770 | 21.8 |
| 2.CRUDE MATS. | 7599 | 16566 | 8967 | 118.0 | 20824 | 27418 | 6594 | 31.7 |
| 3.MIN.FUEL | 131776 | 123376 | -8400 | -6.4 | 300463 | 454760 | 154297 | 51.4 |
| 4.ANI & VEG OIL | 3290 | 4384 | 1094 | 33.3 | 8057 | 7210 | -847 | -10.5 |
| 5.CHEMICAL | 49918 | 50737 | 819 | 1.6 | 128403 | 153960 | 25557 | 19.9 |
| 6.MANUF. GOOD | 57724 | 59706 | 1982 | 3.4 | 159709 | 146952 | -12757 | -8.0 |
| 7.MACH.& TRANSP | 66396 | 79667 | 13271 | 20.0 | 204015 | 257765 | 53750 | 26.3 |
| 8.MISC.MAN.GOOD | 43087 | 41824 | -1263 | -2.9 | 106725 | 113308 | 6583 | 6.2 |
| 9.MISC. COMMDS. | 5287 | 6195 | 908 | 17.2 | 14549 | 17401 | 2852 | 19.6 |
| GENERAL MERCHANDISE IMPORTS | 415555 | 435449 | 19894 | 4.8 | 1095243 | 1352919 | 257676 | 23.5 |
| FREEZONE IMPORTS | 1163 | 1519 | 356 | 30.6 | 4702 | 6352 | 1650 | 35.1 |
| GOODS PROCURED IN PORTS | 9270 | 9735 | 465 | 5.0 | 27810 | 29205 | 1395 | 5.0 |
| TOTAL GOODS IMPORTS | 425988 | 446703 | 20715 | 4.9 | 1127755 | 1388476 | 260721 | 23.1 |

1/PROVISIONAL

MAJOR TRADITIONALS (VOLUME, VALUE, PRICE)

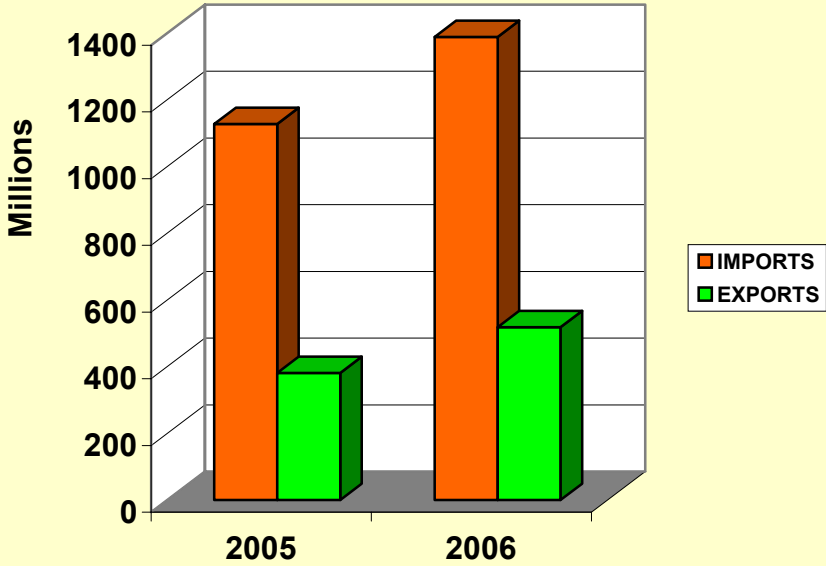
| | MAR 2005 | MAR 1/ 2006 | CHANGE | %CHANGE | JAN-MAR 2005 | JAN-MAR 1/ 2006 | CHANGE | %CHANGE |
|---------------------------|---------------------|------------------------|----------------|----------------|-------------------------|----------------------------|----------------|----------------|
| BAUXITE | | | | | | | | |
| Volume ('000 tonnes) | 352.0 | 433.4 | 81.4 | 23.1 | 1058.2 | 1102.9 | 44.7 | 4.2 |
| Value (U.S. \$000) | 8567.0 | 10796.0 | 2229.0 | 26.0 | 25756.0 | 27472.0 | 1716.0 | 6.7 |
| Price (US \$/tonne) | 24.3 | 24.9 | 0.6 | 2.3 | 24.3 | 24.9 | 0.6 | 2.3 |
| ALUMINA | | | | | | | | |
| Volume ('000 tonnes) | 325.3 | 365.7 | 40.4 | 12.4 | 957.7 | 974.8 | 17.1 | 1.8 |
| Value (U.S. \$000) | 71536.0 | 90327.0 | 18791.0 | 26.3 | 210596.0 | 240754.0 | 30158.0 | 14.3 |
| Price (US \$/tonne) | 219.9 | 247.0 | 27.1 | 12.3 | 219.9 | 247.0 | 27.1 | 12.3 |
| SUGAR | | | | | | | | |
| Volume ('000 tonnes) | 21.0 | 27.5 | 6.5 | 31.0 | 44.9 | 70.8 | 25.9 | 57.7 |
| Value (U.S. \$000) | 14285.0 | 17210.0 | 2925.0 | 20.5 | 31430.0 | 44593.0 | 13163.0 | 41.9 |
| Price (US \$/tonne) | 679.6 | 625.2 | -54.4 | -8.0 | 700.6 | 630.1 | -70.5 | -10.1 |
| BANANAS | | | | | | | | |
| Volume ('000 tonnes) | 0.0 | 2.5 | 2.5 | - | 0.0 | 7.7 | 7.7 | - |
| Value (U.S. \$000) | 0.0 | 1058.0 | 1058.0 | - | 0.0 | 2990.0 | 2990.0 | - |
| Price (US \$/tonne) | 0.0 | 426.8 | 426.8 | - | 0.0 | 388.2 | 388.2 | - |

1/PROVISIONAL

External Sector Statistics Unit.

2006 August

VALUE OF IMPORTS & EXPORT US\$Mn
JAN - MARCH



EXTERNAL TRADE US\$000

| | MAR | MAR 1/ | CHANGE | %CHANGE | APR-MAR | APR-MAR 1/ | CHANGE | %CHANGE |
|----------------------------|-----------|-----------|--------|---------|-----------|------------|---------|---------|
| | 2004/2005 | 2005/2006 | | | 2004/2005 | 2005/2006 | | |
| TOTAL GOODS EXPORTS(F.O.B) | 132245 | 203306 | 71061 | 53.7 | 1566878 | 1801174 | 234296 | 15.0 |
| TOTAL GOODS IMPORTS(C.I.F) | 425988 | 446703 | 20715 | 4.9 | 4264978 | 5126948 | 861970 | 20.2 |
| TRADE BALANCE | -293743 | -243397 | 50346 | 17.1 | -2698100 | -3325774 | -627674 | -23.3 |

VALUE OF TOTAL GOODS EXPORTS US\$000

| | MAR | MAR | CHANGE | %CHANGE | APR-MAR | APR-MAR | CHANGE | %CHANGE |
|---------------------------|-----------|-----------|--------|---------|-----------|-----------|--------|---------|
| | 2004/2005 | 2005/2006 | | | 2004/2005 | 2005/2006 | | |
| O.FOOD | 25178 | 31594 | 6416 | 25.5 | 224601 | 216888 | -7713 | -3.4 |
| 1.BEVER. & TOBAC | 6587 | 7295 | 708 | 10.7 | 66758 | 83570 | 16812 | 25.2 |
| 2.CRUDE MATS | 81157 | 107202 | 26045 | 32.1 | 932245 | 1082426 | 150181 | 16.1 |
| 3.MINERAL FUELS | 2025 | 20802 | 18777 | 927.3 | 32112 | 165225 | 133113 | 414.5 |
| 4.ANI.& VEG OILS | 8 | 16 | 8 | 0.0 | 72 | 113 | 41 | 56.9 |
| 5.CHEMICALS | 2205 | 18820 | 16615 | 753.5 | 73571 | 62375 | -11196 | -15.2 |
| 6.MANUF. GOODS | 1080 | 1612 | 532 | 49.3 | 10242 | 11544 | 1302 | 12.7 |
| 7.MACH.& TRANSP. | 2511 | 2615 | 104 | 4.1 | 19585 | 21040 | 1455 | 7.4 |
| 8.MISC. MANUF | 1518 | 2467 | 949 | 62.5 | 20806 | 22324 | 1518 | 7.3 |
| 9.MISC. COMMDS. | 0 | 0 | 0 | 0.0 | 0 | 0 | 0 | 0.0 |
| GENERAL MERCHANDISE EXPS. | 122269 | 192423 | 70154 | 57.4 | 1379992 | 1665505 | 285513 | 20.7 |
| FREEZONE EXPORTS | 3644 | 4243 | 599 | 16.4 | 115155 | 58761 | -56394 | -49.0 |
| GOODS PROCURED IN PORTS | 6332 | 6640 | 308 | 4.9 | 71731 | 76908 | 5177 | 7.2 |
| TOTAL GOODS EXPORTS | 132245 | 203306 | 71061 | 53.7 | 1566878 | 1801174 | 234296 | 15.0 |

TRADITIONAL & NON-TRADITIONAL EXPORTS US\$000

| | MAR | MAR | CHANGE | %CHANGE | APR-MAR | APR-MAR | CHANGE | %CHANGE |
|---------------------------|-----------|-----------|--------|---------|-----------|-----------|--------|---------|
| | 2004/2005 | 2005/2006 | | | 2004/2005 | 2005/2006 | | |
| MAJOR TRAD. EXPORT | 94388 | 119391 | 25003 | 26.5 | 1002281 | 1148600 | 146319 | 14.6 |
| BAUXITE | 8567 | 10796 | 2229 | 26.0 | 82031 | 100506 | 18475 | 22.5 |
| ALUMINA | 71536 | 90327 | 18791 | 26.3 | 825055 | 950443 | 125388 | 15.2 |
| SUGAR | 14285 | 17210 | 2925 | 20.5 | 87023 | 89968 | 2945 | 3.4 |
| BANANAS | 0 | 1058 | 1058 | 0.0 | 8172 | 7683 | -489 | -6.0 |
| OTHER TRAD. EXPORT | 5198 | 8091 | 2893 | 55.7 | 74110 | 65290 | -8820 | -11.9 |
| CITRUS | 197 | 146 | -51 | -25.9 | 1928 | 1095 | -833 | -43.2 |
| COCOA | 126 | 186 | 60 | 47.6 | 2055 | 1363 | -692 | -33.7 |
| COFFEE | 1942 | 4121 | 2179 | 112.2 | 36116 | 21726 | -14390 | -39.8 |
| PIMENTO | 146 | 67 | -79 | 100.0 | 1967 | 2946 | 979 | 49.8 |
| RUM | 2540 | 3386 | 846 | 33.3 | 30162 | 36328 | 6166 | 20.4 |
| GYPSUM | 247 | 185 | -62 | 0.0 | 1882 | 1832 | -50 | -2.7 |
| NON-TRAD. EXPORTS | 19154 | 60802 | 41648 | 217.4 | 272515 | 418122 | 145607 | 53.4 |
| RE-EXPORTS | 3529 | 4139 | 610 | 17.3 | 31086 | 33493 | 2407 | 7.7 |
| GENERAL MERCHANDISE EXPS. | 122269 | 192423 | 70154 | 57.4 | 1379992 | 1665505 | 285513 | 20.7 |
| FREEZONE EXPORTS | 3644 | 4243 | 599 | 16.4 | 115155 | 58761 | -56394 | -49.0 |
| GOODS PROCURED IN PORTS | 6332 | 6640 | 308 | 4.9 | 71731 | 76908 | 5177 | 7.2 |
| TOTAL GOODS EXPORTS | 132245 | 203306 | 71061 | 53.7 | 1566878 | 1801174 | 234296 | 15.0 |

VALUE OF GOODS IMPORTS BY S.I.T.C. US\$000

| | MAR 2004/2005 | MAR/ 2005/2006 | CHANGE | %CHANGE | APR-MAR 2004/2005 | APR-MAR/ 2005/2006 | CHANGE | %CHANGE |
|------------------------------------|------------------|-------------------|--------------|------------|----------------------|-----------------------|---------------|-------------|
| 0.FOOD | 46753 | 47177 | 424 | 0.9 | 533837 | 621818 | 87981 | 16.5 |
| 1.BEV. & TOBAC | 3725 | 5817 | 2092 | 56.2 | 48028 | 58718 | 10690 | 22.3 |
| 2.CRUDE MATS. | 7599 | 16566 | 8967 | 118.0 | 74369 | 85759 | 11390 | 15.3 |
| 3.MIN.FUEL | 131776 | 123376 | -8400 | -6.4 | 986460 | 1514374 | 527914 | 53.5 |
| 4.ANI & VEG OIL | 3290 | 4384 | 1094 | 33.3 | 33176 | 26815 | -6361 | -19.2 |
| 5.CHEMICAL | 49918 | 50737 | 819 | 1.6 | 420705 | 580879 | 160174 | 38.1 |
| 6.MANUF. GOOD | 57724 | 59706 | 1982 | 3.4 | 611235 | 625056 | 13821 | 2.3 |
| 7.MACH.& TRANSP | 66396 | 79667 | 13271 | 20.0 | 881515 | 923745 | 42230 | 4.8 |
| 8.MISC.MAN.GOOD | 43087 | 41824 | -1263 | -2.9 | 433443 | 483763 | 50320 | 11.6 |
| 9.MISC. COMMDS. | 5287 | 6195 | 908 | 17.2 | 69160 | 76191 | 7031 | 10.2 |
| GENERAL MERCHANDISE IMPORTS | 415555 | 435449 | 19894 | 4.8 | 4091928 | 4997118 | 905190 | 22.1 |
| FREEZONE IMPORTS | 1163 | 1519 | 356 | 30.6 | 61018 | 17195 | -43823 | -71.8 |
| GOODS PROCURED IN PORTS | 9270 | 9735 | 465 | 5.0 | 112032 | 112635 | 603 | 0.5 |
| TOTAL GOODS IMPORTS | 425988 | 446703 | 20715 | 4.9 | 4264978 | 5126948 | 861970 | 20.2 |

1/PROVISIONAL

MAJOR TRADITIONALS (VOLUME, VALUE, PRICE)

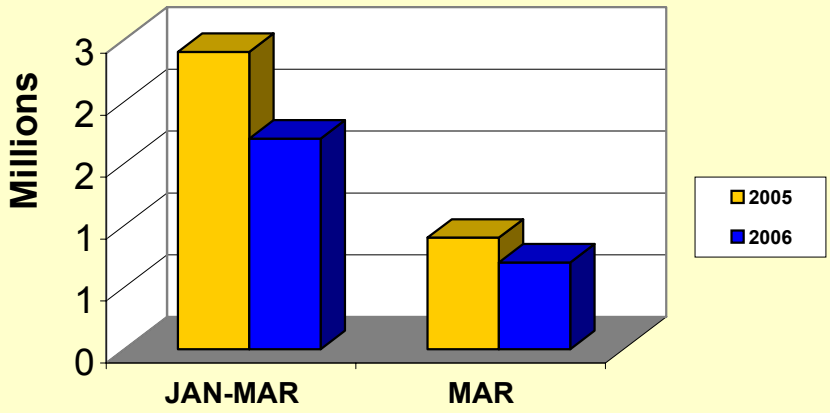
| | MAR | MAR1/ | CHANGE | %CHANGE | APR-MAR | APR-MAR1/ | CHANGE | %CHANGE |
|---------------------------|------------------|------------------|----------------|----------------|------------------|------------------|-----------------|----------------|
| | 2004/2005 | 2005/2006 | | | 2004/2005 | 2005/2006 | | |
| BAUXITE | | | | | | | | |
| Volume ('000 tonnes) | 352.0 | 433.4 | 81.4 | 23.1 | 3409.3 | 4103.4 | 694.1 | 20.4 |
| Value (U.S. \$000) | 8567.0 | 10796.0 | 2229.0 | 26.0 | 82031.0 | 100506.0 | 18475.0 | 22.5 |
| Price (US \$/tonne) | 24.3 | 24.9 | 0.6 | 2.3 | 24.1 | 24.5 | 0.4 | 1.8 |
| ALUMINA | | | | | | | | |
| Volume ('000 tonnes) | 325.3 | 365.7 | 40.4 | 12.4 | 3962.1 | 4184.0 | 221.9 | 5.6 |
| Value (U.S. \$000) | 71536.0 | 90327.0 | 18791.0 | 26.3 | 825055.0 | 950442.8 | 125387.8 | 15.2 |
| Price (US \$/tonne) | 219.9 | 247.0 | 27.1 | 12.3 | 208.2 | 227.2 | 18.9 | 9.1 |
| SUGAR | | | | | | | | |
| Volume ('000 tonnes) | 21.0 | 27.5 | 6.5 | 31.0 | 135.5 | 138.8 | 3.3 | 2.4 |
| Value (U.S. \$000) | 14285.0 | 17210.0 | 2925.0 | 20.5 | 87023.0 | 89968.0 | 2945.0 | 3.4 |
| Price (US \$/tonne) | 679.6 | 625.2 | -54.4 | -8.0 | 642.4 | 648.3 | 5.9 | 0.9 |
| BANANAS | | | | | | | | |
| Volume ('000 tonnes) | 0.0 | 2.5 | 2.5 | - | 18.1 | 19.4 | 1.3 | 7.1 |
| Value (U.S. \$000) | 0.0 | 1058.0 | 1058.0 | - | 8172.0 | 7683.0 | -489.0 | -6.0 |
| Price (US \$/tonne) | 0.0 | 426.8 | 426.8 | - | 450.8 | 395.7 | -55.1 | -12.2 |

1/PROVISIONAL

External Sector Statistics Unit.
2006 August

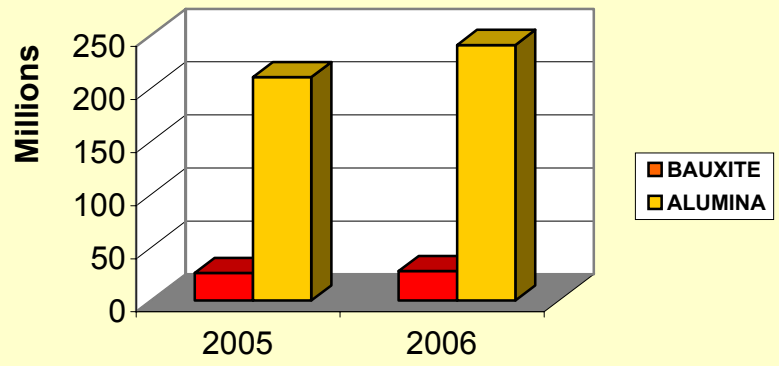
| GARMENTS EXPORTS US\$Mn. | | | | |
|---|-------------|------------|-------------|--------------|
| | 2005 | 2006 | CHANGE | %CHANGE |
| JANUARY | 0.8 | 0.5 | -0.3 | -37.5 |
| FEBRUARY | 0.7 | 0.5 | -0.2 | -28.6 |
| MARCH | 0.9 | 0.7 | -0.2 | -22.2 |
| JAN-MARCH | 2.4 | 1.7 | -0.7 | -29.2 |
| | 2004/2005 | 2005/2006 | CHANGE | %CHANGE |
| APRIL | 1.2 | 0.9 | -0.3 | -25.0 |
| MAY | 0.9 | 0.8 | -0.1 | -11.1 |
| JUNE | 0.8 | 0.9 | 0.1 | 12.5 |
| APRIL-JUNE | 2.9 | 2.6 | -0.3 | -10.3 |
| JULY | 0.8 | 0.9 | 0.1 | 12.5 |
| AUGUST | 0.8 | 0.9 | 0.1 | 12.5 |
| SEPTEMBER | 0.6 | 0.9 | 0.3 | 50.0 |
| APRIL-SEPT | 5.1 | 5.3 | 0.2 | 3.9 |
| OCTOBER | 0.9 | 0.5 | -0.4 | -44.4 |
| NOVEMBER | 1 | 0.7 | -0.3 | -30.0 |
| DECEMBER | 1.1 | 0.4 | -0.7 | -63.6 |
| APRIL-DEC | 8.1 | 6.9 | -1.2 | -14.8 |
| JANUARY | 0.8 | 0.5 | -0.3 | -37.5 |
| FEBRUARY | 0.7 | 0.5 | -0.2 | -28.6 |
| MARCH | 0.9 | 0.7 | -0.2 | -22.2 |
| APRIL-MARCH | 10.3 | 7.7 | -2.6 | -25.2 |
| SOURCE: STATISTICAL INSTITUTE OF JAMAICA EXTERNAL SECTOR STATISTICS 2006 August | | | | |

**GARMENTS EXPORT US\$Mn
JAN-MAR**



| BAUXITE | | | | | | |
|----------------|--------------------------------------|--------------------------------------|---------------------|--------------------------------------|--------------------------------------|---------------------|
| | 2005 Volumes (Tonnes) | 2006 Volumes (Tonnes) | % Change | 2005 Values (\$ 000') | 2006 Values (\$ 000') | % Change |
| JANUARY | 393019.0 | 349982.0 | -11.0 | 9566.0 | 8869.0 | -7.3 |
| FEBRUARY | 313182.0 | 319483.0 | 2.0 | 7623.0 | 8096.0 | 6.2 |
| MARCH | 351972.0 | 433386.0 | 23.1 | 8567.0 | 10796.0 | 26.0 |
| JAN-MAR | 1058173.0 | 1102851.0 | 4.2 | 25756.0 | 27761.0 | 7.8 |
| ALUMINA | | | | | | |
| | 2005 Volumes (Tonnes) | 2006 Volumes (Tonnes) | % Change | 2005 Values (\$ 000') | 2006 Values (\$ 000') | % Change |
| JANUARY | 358434.0 | 273675.0 | -23.6 | 78820.0 | 67592.0 | -14.2 |
| FEBRUARY | 273943.0 | 335390.0 | 22.4 | 60240.0 | 82835.0 | 37.5 |
| MARCH | 325312.0 | 365727.0 | 12.4 | 71536.0 | 90327.0 | 26.3 |
| JAN-MAR | 957689.0 | 974792.0 | 1.8 | 210596.0 | 240754.0 | 14.3 |

**BAUXITE/ALUMINA US\$Mn
JAN - MAR**



EXPORTS OF SELECTED NON-TRADITIONAL DOMESTIC COMMODITIES US\$ 000

| COMMODITIES | 2005 | 2006 | % | 2005 | 2006 | % | 2004/2005 | 2005/2006 | % |
|------------------------|-------------|-------------|-------------|-------------|-------------|--------------|--------------|--------------|--------------|
| | JAN-MAR | JAN-MAR 1/ | | MAR | MAR 1/ | | APR-MAR | APR-MAR 1/ | |
| COMMODITIES | | | | | | | | | |
| FOOD | | | | | | | | | |
| ACKEE | 2714 | 1133 | -58.3 | 1580 | 544 | -65.6 | 9604 | 8023 | -16.5 |
| FISH | 1429 | 2345 | 64.1 | 634 | 1211 | 91.0 | 9863 | 10779 | 9.3 |
| BREADFRUIT | 150 | 172 | 14.7 | 65 | 72 | 10.8 | 745 | 767 | 3.0 |
| CUCUMBERS | 3 | 0 | -100.0 | 1 | 0 | -100.0 | 10 | 7 | -30.0 |
| PUMPKINS | 105 | 53 | -49.5 | 29 | 36 | 24.1 | 273 | 221 | -19.0 |
| OTHER VEGETABLES | 30 | 43 | 43.3 | 13 | 17 | 30.8 | 277 | 290 | 4.7 |
| DASHEEN | 227 | 323 | 42.3 | 76 | 101 | 32.9 | 743 | 839 | 12.9 |
| CASSAVA | 0 | 0 | 0.0 | 0 | 0 | 0.0 | 0 | 0 | 0.0 |
| SWEET POTATOES | 493 | 459 | -6.9 | 192 | 178 | -7.3 | 1952 | 1918 | -1.7 |
| YAMS | 3363 | 3569 | 6.1 | 1342 | 1266 | -5.7 | 15258 | 15464 | 1.4 |
| AVOCADOES | 0 | 0 | 0.0 | 0 | 0 | 0.0 | 276 | 276 | 0.0 |
| MANGOES | 148 | 72 | -51.4 | 92 | 62 | -32.6 | 921 | 845 | -8.3 |
| OTHER ROOTS | 122 | 156 | 27.9 | 39 | 52 | 33.3 | 502 | 536 | 6.8 |
| PAPAYAS | 416 | 485 | 16.6 | 198 | 250 | 26.3 | 2043 | 2112 | 3.4 |
| MELON | 0 | 0 | 0.0 | 0 | 0 | 0.0 | 0 | 0 | 0.0 |
| Total | 9200 | 8810 | -4.2 | 4261 | 3789 | -11.1 | 42467 | 42077 | -0.9 |
| CRUDE MATERIALS | | | | | | | | | |
| Cut Flowers | 9 | 0 | -100.0 | 2 | 0 | -100.0 | 19 | 10 | -47.4 |
| Live Plts.&Foliage | 12 | 25 | 108.3 | 10 | 9 | -10.0 | 26 | 25 | -3.8 |
| Orchids | 5 | 4 | -20.0 | 2 | 1 | -50.0 | 10 | 9 | -10.0 |
| Total | 26 | 29 | 11.5 | 14 | 10 | -28.6 | 55 | 44 | -20.0 |
| 1/PROVISIONAL | | | | | | | | | |
| 2006 August | | | | | | | | | |

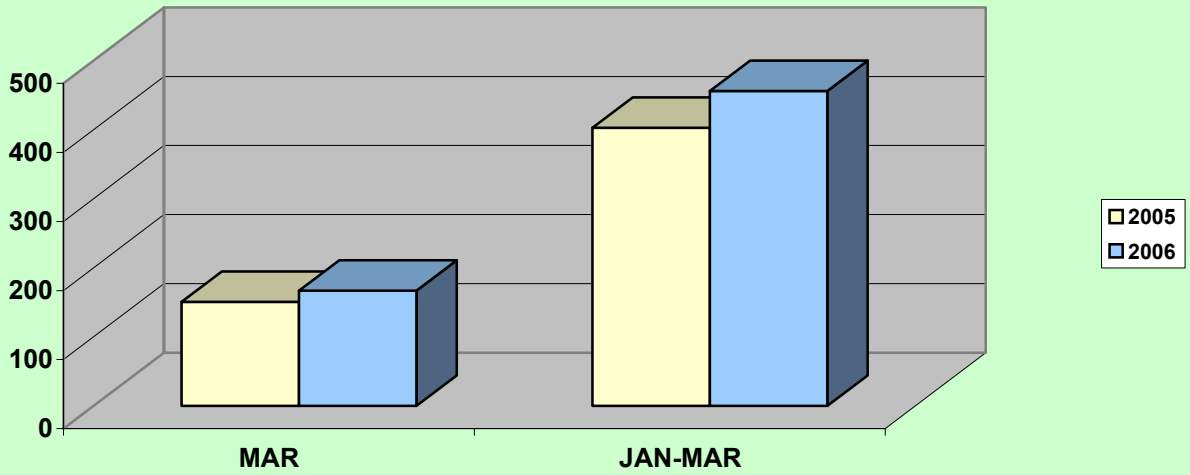
TOURISM STATISTICS

| | 2005 MAR | 2006 MAR 1/ | % CHNG | 2005 JAN-MAR | 2006 JAN-MAR / | % CHNG |
|---|---------------|----------------|-------------|-----------------|-------------------|-------------|
| TOTAL STOP-OVERS | 155103 | 167439 | 8.0 | 394969 | 436562 | 10.5 |
| FOREIGN NAT. STOP-OVERS(# of) | 147180 | 160261 | 8.9 | 377041 | 417770 | 10.8 |
| Long Stay | 143020 | 155744 | 8.9 | 364120 | 404861 | 11.2 |
| Short Stay | 4160 | 4517 | 8.6 | 12921 | 12909 | -0.1 |
| NON-RES. JAMAICANS | 7923 | 7178 | -9.4 | 17928 | 18792 | 4.8 |
| CRUISE PASSENGERS | 150871 | 153972 | 2.1 | 374973 | 406302 | 8.4 |
| TOTAL TOURISTS | 305974 | 321411 | 5.0 | 769942 | 842864 | 9.5 |
| ARMED FORCES | 0 | 0 | - | 0 | 0 | - |
| TOTAL VISITORS | 305974 | 321411 | 5.0 | 769942 | 842864 | 9.5 |
| AVG.LENGTH.OF STAY | 8.5 | 8.5 | 0.0 | 9.0 | 9.0 | -0.2 |
| ESTM.EXPD.(US\$MN) | 150.5 | 166.6 | 10.8 | 402.8 | 455.9 | 13.2 |
| Avg. Est.Exp/per person/per day (US\$) | | | | | | |
| Stop-Overs | 107.3 | 110.5 | 2.9 | 107.3 | 110.5 | 2.9 |
| A.forces/Cruise | 81.4 | 82.0 | 0.7 | 81.4 | 82.0 | 0.7 |

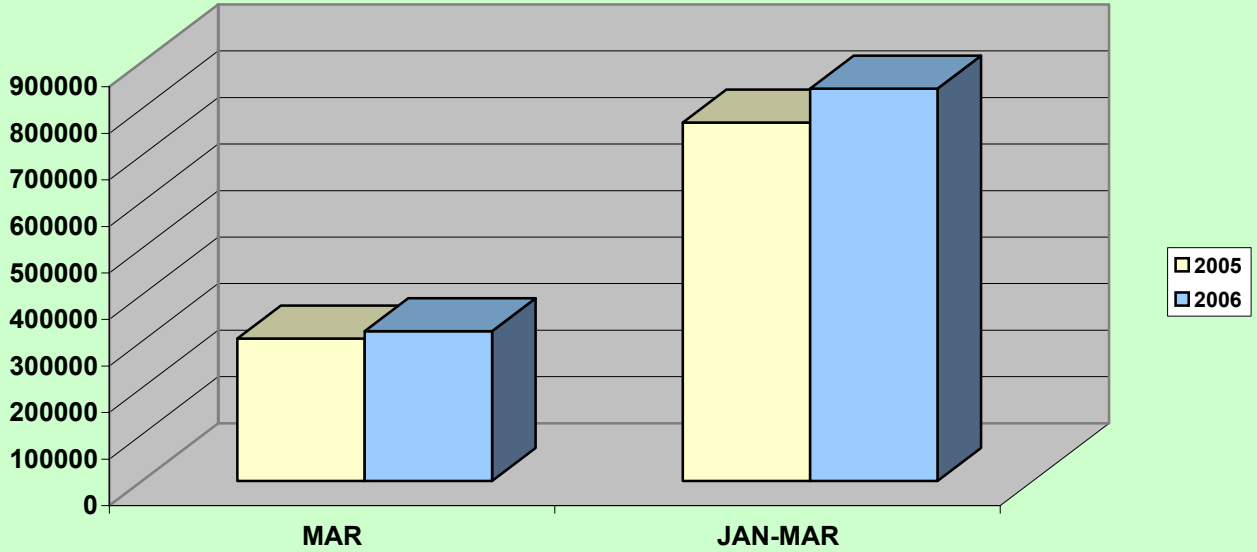
1/ Provisional

*External Sector Statistics Unit
Economic Information & Publications Dept.
2006 August*

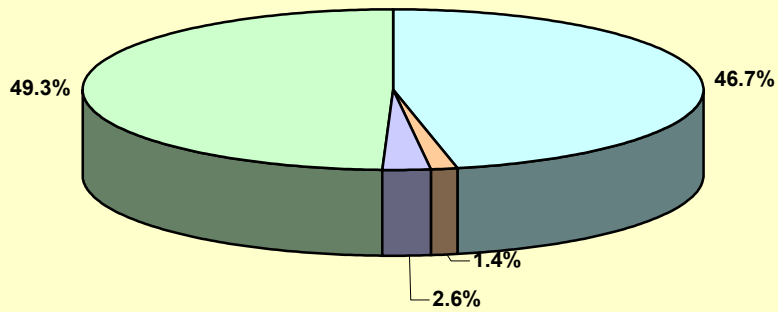
Estimated Tourist Expenditure (US\$m)



Jamaica: Total Visitors

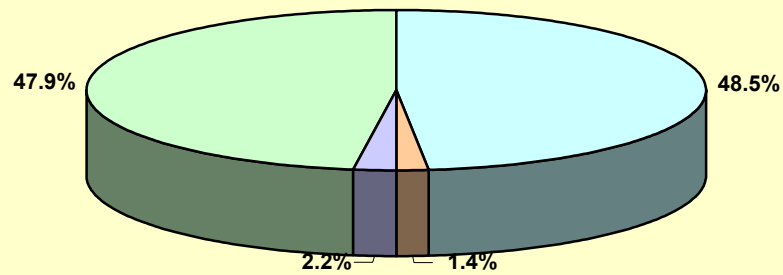


Composition of Visitors March 2005



For. Nat. Long Stay For. Nat. Short Stay Non-Res. Jamaicans Cruise Passengers

Composition of Visitors March 2006



For. Nat. Long Stay For. Nat. Short Stay Non-Res. Jamaicans Cruise Passengers

TOURISM STATISTICS

| | 2004/2005 | 2005/2006 | | % |
|---|------------------|-------------------|---------------|-------------|
| | APR-MAR | APR-MAR 1/ | CHNG | CHNG |
| TOTAL STOP-OVERS | 1443670 | 1520256 | 76586 | 5.3 |
| FOREIGN NAT. STOP-OVERS | 1353715 | 1427725 | 74010 | 5.5 |
| Long Stay | 1288089 | 1382300 | 94211 | 7.3 |
| Short Stay | 65626 | 45425 | -20201 | -30.8 |
| NON-RES. JAMAICANS | 89955 | 92531 | 2576 | 2.9 |
| CRUISE PASSENGERS | 1105479 | 1167172 | 61693 | 5.6 |
| TOTAL TOURISTS | 2549149 | 2687428 | 138279 | 5.4 |
| ARMED FORCES | 0 | 0 | 0 | - |
| TOTAL VISITORS | 2549149 | 2687428 | 138279 | 5.4 |
| AVG.LENGTH.OF STAY | 9.9 | 9.8 | -0.1 | -1.1 |
| ESTM.EXPD.(US\$MN) | 1457.1 | 1588.8 | 131.7 | 9.0 |
| Avg. Est.Exp/per person/per day (US\$) | | | | |
| Stop-Overs | 96.9 | 103.1 | 6.2 | 6.4 |
| A.forces/Cruise | 85.9 | 85.8 | -0.1 | -0.1 |

1/Provisional

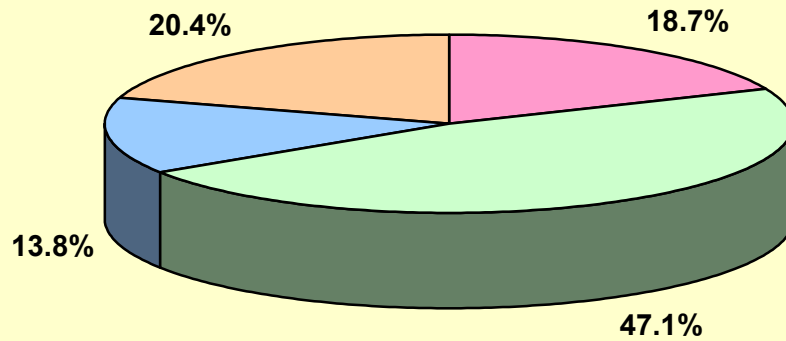
External Sector Statistics Unit

Economic Information & Publications Dept.

| SOURCES OF PRIVATE TRANSFERS | | | | | | | | |
|-------------------------------------|---------------|---------------|---------------|--------------|----------------|-------------------|---------------|--------------|
| (US\$Mn) | | | | | | | | |
| | 2005 | 2006 | | | 2005 | 2006 | | |
| | MAR | MAR 1/ | CHNG | %CHNG | JAN-MAR | JAN-MAR 1/ | CHNG | %CHNG |
| TOTAL INFLOWS | 176.29 | 160.89 | -15.40 | -8.73 | 495.01 | 453.90 | -41.11 | -8.30 |
| COMMERCIAL BANKS | 32.99 | 34.66 | 1.67 | 5.06 | 95.86 | 102.74 | 6.88 | 7.18 |
| REMITTANCE COMPS. | 83.07 | 86.55 | 3.48 | 4.19 | 221.00 | 237.70 | 16.69 | 7.55 |
| POST OFFICE | 0.11 | 0.11 | 0.00 | 0.00 | 0.32 | 0.32 | 0.00 | 0.00 |
| BUILDING SOCIETIES | 24.35 | 26.17 | 1.82 | 7.46 | 70.51 | 72.92 | 2.40 | 3.41 |
| OTHER | 35.77 | 13.41 | -22.36 | -62.51 | 107.32 | 40.23 | -67.09 | -62.51 |

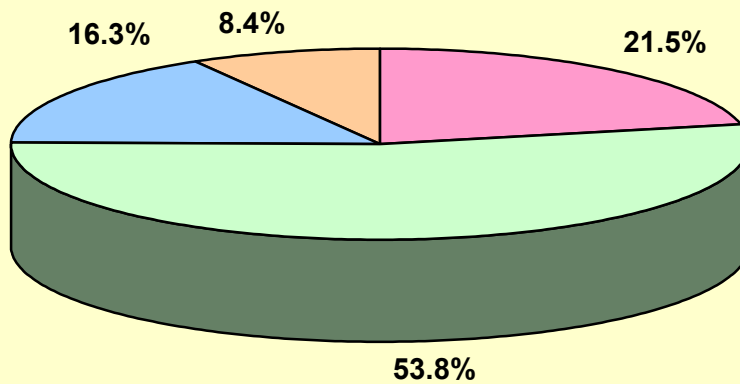
| SOURCES OF PRIVATE TRANSFERS | | | | |
|-------------------------------------|------------------|---------------------|--------------|--------------|
| (US\$Mn) | | | | |
| | 2004/2005 | 2005/2006 | | |
| | APR - MAR | APR - MAR 1/ | CHNG | %CHNG |
| TOTAL INFLOWS | 1828.64 | 1828.56 | -0.08 | 0.00 |
| COMMERCIAL BANKS | 360.54 | 364.84 | 4.30 | 1.19 |
| REMITTANCE COMPS. | 809.50 | 978.55 | 169.05 | 20.88 |
| POST OFFICE | 1.23 | 1.24 | 0.01 | 0.82 |
| BUILDING SOCIETIES | 327.43 | 302.58 | -24.85 | -7.59 |
| OTHER | 329.95 | 181.35 | -148.60 | -45.04 |

Sources of Private Transfers (US\$m)
March 2005



Commercial Banks Remittance Companies Building Societies Other

Sources of Private Transfers (US\$m)
March 2006



Commercial Banks Remittance Companies Building Societies Other

Balance of Payments of Jamaica

US\$Mn.

| | Jan-Mar 2005 | Jan-Mar 1/ 2006 | Change |
|---|-----------------|--------------------|--------------|
| 1. Current Account | -168.7 | -218.1 | -49.4 |
| A. Goods Balance | -601.2 | -700.3 | -99.1 |
| Exports | 381.2 | 518.1 | 136.9 |
| Imports | 982.4 | 1218.4 | 236.0 |
| B. Services Balance | 200.8 | 240.4 | 39.6 |
| Transportation | -46.1 | -60.1 | -14.0 |
| Travel | 352.2 | 407.5 | 55.3 |
| Other Services | -105.3 | -107.0 | -1.7 |
| C. Income | -164.1 | -162.2 | 1.9 |
| Compensation of employees | 8.5 | 9.9 | 1.4 |
| Investment Income | -172.6 | -172.1 | 0.5 |
| D. Current Transfers | 395.8 | 404.0 | 8.2 |
| Official | 42.4 | 35.7 | -6.7 |
| Private | 353.4 | 368.3 | 14.9 |
| 2. Capital & Financial Account | 168.7 | 218.1 | 49.4 |
| A. Capital Account | -0.9 | -1.8 | -0.9 |
| Capital Transfers | -0.9 | -1.8 | -0.9 |
| Official | 0.1 | 0.0 | -0.1 |
| Private | -1.0 | -1.8 | -0.8 |
| Acq/dis. of non-produced non-fin. assets | 0.0 | 0.0 | 0.0 |
| B. Financial Account | 169.6 | 219.9 | 50.3 |
| Other Official Investment (incl. Govt. Reserves) | 13.4 | -38.8 | -52.2 |
| Other Private Investment (incl. Errors & omissions) | 199.3 | 249.5 | 50.2 |
| Reserves | -43.1 | 9.2 | |

1/Provisional

External Sector Statistics Unit

Economic Information & Publications Dept.

2006 August

| Balance of Payments of Jamaica | | | |
|---------------------------------------|-------------------------|----------------------------|---------------|
| US\$Mn. | | | |
| | Jan-Mar 2005 | Jan-Mar 1/ 2006 | Change |
| Services (Net) | 200.8 | 240.4 | 39.6 |
| Inflows | 618.4 | 683.9 | 65.5 |
| Outflows | 417.6 | 443.5 | 25.9 |
| Transportation | -46.1 | -60.1 | -14.0 |
| Inflows | 132.9 | 145.3 | 12.4 |
| Outflows | 179.0 | 205.4 | 26.4 |
| Travel | 352.2 | 407.5 | 55.3 |
| Inflows | 402.8 | 455.9 | 53.1 |
| Outflows | 50.6 | 48.4 | -2.2 |
| Other Services | -105.3 | -107.0 | -1.7 |
| Inflows | 82.7 | 82.7 | 0.0 |
| Outflows | 188.0 | 189.7 | 1.7 |
| Income (Net) | -164.1 | -162.2 | 1.9 |
| Compensation of Employees | 8.5 | 9.9 | 1.4 |
| Inflows | 21.5 | 22.9 | 1.4 |
| Outflows | 13.0 | 13.0 | 0.0 |
| Investment Income | -172.6 | -172.1 | 0.5 |
| Inflows | 41.5 | 50.4 | 8.9 |
| Outflows | 214.1 | 222.5 | 8.4 |
| - Bank of Jamaica | 0.1 | 0.1 | 0.0 |
| - Government Direct | 81.3 | 81.3 | 0.0 |
| - Government Guaranteed | 0.3 | 0.5 | 0.3 |
| - Private | 0.0 | 0.0 | 0.0 |
| - Direct Investment | 100.4 | 108.6 | 8.2 |
| - Other | 32.0 | 32.0 | 0.0 |
| Current Transfers (Net) | 395.8 | 404.0 | 8.2 |
| Inflows | 481.3 | 490.8 | 9.5 |
| Outflows | 85.5 | 86.8 | 1.3 |
| Official | 42.4 | 35.7 | -6.7 |
| Inflows | 43.6 | 36.9 | -6.7 |
| Outflows | 1.2 | 1.2 | 0.0 |
| Private | 353.4 | 368.3 | 14.9 |
| Inflows | 437.7 | 453.9 | 16.2 |
| Outflows | 84.3 | 85.6 | 1.3 |

| | Balance of Payments of Jamaica US\$Mn. | | |
|---|---|--------------------|--------------|
| | Jan-Mar 2005 | Jan-Mar 1/ 2006 | Change |
| Capital & Financial Account (Net) | 168.7 | 218.1 | 49.4 |
| Capital Account (Net) | -0.9 | -1.8 | -0.9 |
| 1. Capital Transfers | -0.9 | -1.8 | -0.9 |
| Official | 0.1 | 0.0 | -0.1 |
| Inflows | 0.1 | 0.0 | -0.1 |
| Outflows | 0.0 | 0.0 | 0.0 |
| Private | -1.0 | -1.8 | -0.8 |
| Inflows | 5.3 | 4.5 | -0.8 |
| Outflows | 6.3 | 6.3 | 0.0 |
| 2. Acq/disp. of non-produced non-fin. assets | 0.0 | 0.0 | 0.0 |
| Inflows | 0.0 | 0.0 | 0.0 |
| Outflows | 0.0 | 0.0 | 0.0 |
| Financial Account (Net) | 169.6 | 219.9 | 50.3 |
| Other Official Investments (incl. Govt. Reserves) | 13.4 | -38.8 | -52.2 |
| Inflows | 80.3 | 302.3 | 222.0 |
| Outflows | 66.9 | 341.1 | 274.2 |
| Other Private Investments (incl. errors & omissions) | 199.3 | 249.5 | 50.2 |
| Inflows | 729.4 | 972.8 | 243.4 |
| Outflows | 530.1 | 723.3 | 193.2 |
| Reserves | -43.1 | 9.2 | |

| | Balance of Payments of Jamaica | | | Balance of Payments of Jamaica | | |
|---|--------------------------------|----------------|--------------|--------------------------------|-----------------------|---------------|
| | US\$Mn. | | | US\$Mn. | | |
| | Mar 2005 | Mar 1/ 2006 | Change | Apr-Mar 2004/05 | Apr-Mar 1/ 2005/06 | Change |
| 1. Current Account | -43.9 | 14.4 | 58.3 | -643.7 | -1128.3 | -484.6 |
| A. Goods Balance | -240.8 | -186.2 | 54.6 | -2123.8 | -2680.4 | -556.6 |
| Exports | 132.2 | 203.3 | 71.1 | 1566.8 | 1801.2 | 234.4 |
| Imports | 373.0 | 389.5 | 16.5 | 3690.6 | 4481.6 | 791.0 |
| B. Services Balance | 81.3 | 97.1 | 15.8 | 570.3 | 639.7 | 69.4 |
| Transportation | -13.8 | -16.1 | -2.3 | -182.3 | -287.8 | -105.5 |
| Travel | 133.8 | 150.9 | 17.1 | 1178.5 | 1351.0 | 172.5 |
| Other Services | -38.7 | -37.7 | 1.0 | -425.9 | -423.5 | 2.4 |
| C. Income | -27.5 | -38.8 | -11.3 | -598.5 | -674.2 | -75.7 |
| Compensation of employees | 4.3 | 5.0 | 0.7 | 88.2 | 89.8 | 1.6 |
| Investment Income | -31.8 | -43.8 | -12.0 | -686.7 | -764.0 | -77.3 |
| D. Current Transfers | 143.1 | 142.3 | -0.8 | 1508.3 | 1586.6 | 78.3 |
| Official | 16.9 | 12.0 | -4.9 | 174.8 | 130.3 | -44.5 |
| Private | 126.2 | 130.3 | 4.1 | 1333.5 | 1456.3 | 122.8 |
| 2. Capital & Financial Account | 43.9 | -14.4 | -58.3 | 643.7 | 1128.3 | 484.6 |
| A. Capital Account | -0.5 | -0.4 | 0.1 | 1.7 | -3.6 | -5.3 |
| Capital Transfers | -0.5 | -0.4 | 0.1 | 1.7 | -3.6 | -5.3 |
| Official | 0.0 | 0.0 | 0.0 | 10.5 | 0.2 | -10.3 |
| Private | -0.5 | -0.4 | 0.1 | -8.8 | -3.8 | 5.0 |
| Acq/dis. of non-produced non-fin. assets | 0.0 | 0.0 | 0.0 | 0.0 | 0.0 | 0.0 |
| B. Financial Account | 44.4 | -14.0 | -58.4 | 642.0 | 1131.9 | 489.9 |
| Other Official Investment (incl. Govt. Reserves) | 9.6 | -17.9 | -27.5 | 235.1 | 348.0 | 112.9 |
| Other Private Investment (incl. Errors & omissions) | 105.3 | 57.8 | -47.5 | 739.9 | 960.5 | 220.6 |
| Reserves | -70.5 | -53.9 | 16.6 | -333.0 | -176.6 | |

1/Provisional

External Sector Statistics Unit
Economic Information & Publications Dept.
2006 August

| | Balance of Payments of Jamaica US\$Mn. | | | Balance of Payments of Jamaica US\$Mn. | | |
|----------------------------------|---|----------------|--------------|---|-----------------------|---------------|
| | Mar 2005 | Mar 1/ 2006 | Change | Apr-Mar 2004/05 | Apr-Mar 1/ 2005/06 | Change |
| Services (Net) | 81.3 | 97.1 | 15.8 | 570.3 | 639.8 | 69.5 |
| Inflows | 230.5 | 249.3 | 18.8 | 2292.0 | 2395.1 | 103.1 |
| Outflows | 149.2 | 152.2 | 3.0 | 1721.7 | 1755.3 | 33.6 |
| Transportation | -13.8 | -16.1 | -2.3 | -182.3 | -287.8 | -105.5 |
| Inflows | 52.8 | 55.4 | 2.6 | 484.7 | 463.6 | -21.1 |
| Outflows | 66.6 | 71.5 | 4.9 | 667.0 | 751.4 | 84.4 |
| Travel | 133.8 | 150.9 | 17.1 | 1178.5 | 1351.0 | 172.5 |
| Inflows | 150.5 | 166.6 | 16.1 | 1457.2 | 1598.1 | 140.9 |
| Outflows | 16.7 | 15.7 | -1.0 | 278.7 | 247.1 | -31.6 |
| Other Services | -38.7 | -37.7 | 1.0 | -425.9 | -423.5 | 2.4 |
| Inflows | 27.2 | 27.3 | 0.1 | 350.1 | 333.3 | -16.8 |
| Outflows | 65.9 | 65.0 | -0.9 | 776.0 | 756.8 | -19.2 |
| Income (Net) | -27.5 | -38.8 | -11.3 | -598.5 | -674.2 | -75.7 |
| Compensation of Employees | 4.3 | 5.0 | 0.7 | 88.2 | 89.8 | 1.6 |
| Inflows | 8.4 | 9.1 | 0.7 | 140.7 | 141.6 | 0.9 |
| Outflows | 4.1 | 4.1 | 0.0 | 52.5 | 51.8 | -0.7 |
| Investment Income | -31.8 | -43.8 | -12.0 | -686.7 | -764.0 | -77.3 |
| Inflows | 13.8 | 17.4 | 3.6 | 143.9 | 196.7 | 52.8 |
| Outflows | 45.6 | 61.2 | 15.6 | 830.6 | 960.7 | 130.1 |
| - Bank of Jamaica | 0.1 | 0.1 | 0.0 | 0.4 | 0.7 | 0.3 |
| - Government Direct | 12.5 | 13.3 | 0.7 | 327.9 | 352.5 | 24.6 |
| - Government Guaranteed | 0.3 | 0.5 | 0.3 | 1.8 | 17.8 | 16.1 |
| - Private | 0.0 | 0.0 | 0.0 | 0.0 | 0.0 | 0.0 |
| - Direct Investment | 22.0 | 36.7 | 14.6 | 365.2 | 461.8 | 96.6 |
| - Other | 10.7 | 10.7 | 0.0 | 135.4 | 128.0 | -7.4 |
| Current Transfers (Net) | 143.1 | 142.3 | -0.8 | 1508.3 | 1586.6 | 78.3 |
| Inflows | 174.5 | 173.3 | -1.2 | 1950.0 | 1945.1 | -4.9 |
| Outflows | 31.4 | 31.0 | -0.4 | 441.7 | 358.5 | -83.2 |
| Official | 16.9 | 12.0 | -4.9 | 174.8 | 130.3 | -44.5 |
| Inflows | 17.3 | 12.4 | -4.9 | 178.7 | 135.2 | -43.5 |
| Outflows | 0.4 | 0.4 | 0.0 | 3.9 | 4.9 | 1.0 |
| Private | 126.2 | 130.3 | 4.1 | 1333.5 | 1456.3 | 122.8 |
| Inflows | 157.2 | 160.9 | 3.7 | 1771.3 | 1809.9 | 38.6 |
| Outflows | 31.0 | 30.6 | -0.4 | 437.8 | 353.6 | -84.2 |

| | Balance of Payments of Jamaica US\$Mn. | | | Balance of Payments of Jamaica US\$Mn. | | |
|--|---|----------------|--------------|---|-----------------------|--------------|
| | Mar 2005 | Mar 1/ 2006 | Change | Apr-Mar 2004/05 | Apr-Mar 1/ 2005/06 | Change |
| Capital & Financial Account (Net) | 43.9 | -14.4 | -58.3 | 643.7 | 1128.3 | 484.6 |
| Capital Account (Net) | -0.5 | -0.4 | 0.1 | 1.7 | -3.6 | -5.3 |
| 1. Capital Transfers | -0.5 | -0.4 | 0.1 | 1.7 | -3.6 | -5.3 |
| Official | 0.0 | 0.0 | 0.0 | 10.5 | 0.2 | -10.3 |
| Inflows | 0.0 | 0.0 | 0.0 | 10.5 | 0.2 | -10.3 |
| Outflows | 0.0 | 0.0 | 0.0 | 0.0 | 0.0 | 0.0 |
| Private | -0.5 | -0.4 | 0.1 | -8.8 | -3.8 | 5.0 |
| Inflows | 1.6 | 1.7 | 0.1 | 22.7 | 21.4 | -1.3 |
| Outflows | 2.1 | 2.1 | 0.0 | 31.5 | 25.2 | -6.3 |
| 2. Acq/disp. of non-produced non-fin. assets | 0.0 | 0.0 | 0.0 | 0.0 | 0.0 | 0.0 |
| Inflows | 0.0 | 0.0 | 0.0 | 0.0 | 0.0 | 0.0 |
| Outflows | 0.0 | 0.0 | 0.0 | 0.0 | 0.0 | 0.0 |
| Financial Account (Net) | 44.4 | -14.0 | -58.4 | 642.0 | 1131.8 | 489.8 |
| Other Official Investments (incl. Govt. Reserves) | 9.6 | -17.9 | -27.5 | 235.1 | 348.0 | 112.9 |
| Inflows | 39.1 | 25.2 | -13.9 | 790.6 | 1655.8 | 865.2 |
| Outflows | 29.5 | 43.1 | 13.6 | 555.5 | 1307.8 | 752.3 |
| Other Private Investments (incl.errors & omissions) | 105.3 | 57.8 | -47.5 | 739.9 | 960.4 | 220.5 |
| Inflows | 284.8 | 279.5 | -5.3 | 2905.1 | 3566.3 | 661.2 |
| Outflows | 179.5 | 221.7 | 42.2 | 2165.2 | 2605.9 | 440.7 |
| Reserves | -70.5 | -53.9 | 16.6 | -333.0 | -176.6 | |

**BALANCE OF PAYMENTS OF JAMAICA
US\$MN**

| | Jan-Dec 2004 | Jan-Dec 1/ 2005 | Change | Feb 1/ 2005 | Feb 1/ 2006 | Change | Mar 1/ 2005 | Mar 1/ 2006 | Change | Jan-Mar 1/ 2005 | Jan-Mar 1/ 2006 | Change |
|---|-----------------|--------------------|---------------|----------------|----------------|---------------|----------------|----------------|--------------|--------------------|--------------------|--------------|
| 1. Current Account | -509.4 | -1078.7 | -569.3 | -31.8 | -127.1 | -95.3 | -43.9 | 14.4 | 58.3 | -168.7 | -218.1 | -49.4 |
| A. Goods Balance | -1944.5 | -2581.3 | -636.8 | -145.1 | -249.9 | -104.8 | -240.8 | -186.2 | 54.6 | -601.2 | -700.3 | -99.1 |
| Exports | 1601.6 | 1664.3 | 62.7 | 129.9 | 170.1 | 40.2 | 132.2 | 203.3 | 71.1 | 381.2 | 518.1 | 136.9 |
| Imports | 3546.1 | 4245.6 | 699.5 | 275.0 | 420.0 | 145.0 | 373.0 | 389.5 | 16.5 | 982.4 | 1218.4 | 236.0 |
| B. Services Balance | 571.7 | 600.1 | 28.4 | 64.3 | 69.6 | 5.3 | 81.3 | 97.1 | 15.8 | 200.8 | 240.4 | 39.6 |
| Transportation | -150.3 | -273.8 | -123.5 | -12.8 | -25.0 | -12.2 | -13.8 | -16.1 | -2.3 | -46.1 | -60.1 | -14.0 |
| Travel | 1151.5 | 1295.7 | 144.2 | 109.4 | 130.7 | 21.3 | 133.8 | 150.9 | 17.1 | 352.2 | 407.5 | 55.3 |
| Other Services | -429.5 | -421.8 | 7.7 | -32.3 | -36.1 | -3.8 | -38.7 | -37.7 | 1.0 | -105.3 | -107.0 | -1.7 |
| C. Income | -582.7 | -675.9 | -93.2 | -76.8 | -79.2 | -2.4 | -27.5 | -38.8 | -11.3 | -164.1 | -162.2 | 1.9 |
| Compensation of employees | 84.5 | 88.5 | 4.0 | 0.8 | 0.7 | -0.1 | 4.3 | 5.0 | 0.7 | 8.5 | 9.9 | 1.4 |
| Investment Income | -667.2 | -764.4 | -97.2 | -77.6 | -79.9 | -2.3 | -31.8 | -43.8 | -12.0 | -172.6 | -172.1 | 0.5 |
| D. Current Transfers | 1446.1 | 1578.4 | 132.3 | 125.8 | 132.4 | 6.6 | 143.1 | 142.3 | -0.8 | 395.8 | 404.0 | 8.2 |
| General Government | 159.9 | 137.0 | -22.9 | 12.6 | 12.0 | -0.6 | 16.9 | 12.0 | -4.9 | 42.4 | 35.7 | -6.7 |
| Other Sector | 1286.2 | 1441.4 | 155.2 | 113.2 | 120.4 | 7.2 | 126.2 | 130.3 | 4.1 | 353.4 | 368.3 | 14.9 |
| 2. Capital & Financial Account | 509.4 | 1078.7 | 569.3 | 31.8 | 127.1 | 95.3 | 43.9 | -14.4 | -58.3 | 168.7 | 218.1 | 49.4 |
| A. Capital Account | 2.2 | -2.7 | -4.9 | 0.1 | -0.8 | -0.9 | -0.5 | -0.4 | 0.1 | -0.9 | -1.8 | -0.9 |
| Capital Transfers | 2.2 | -2.7 | -4.9 | 0.1 | -0.8 | -0.9 | -0.5 | -0.4 | 0.1 | -0.9 | -1.8 | -0.9 |
| General Government | 13.8 | 0.3 | -13.5 | 0.1 | 0.0 | -0.1 | 0.0 | 0.0 | 0.0 | 0.1 | 0.0 | |
| Other Sector | -11.6 | -3.0 | 8.6 | 0.0 | -0.8 | -0.8 | -0.5 | -0.4 | 0.1 | -1.0 | -1.8 | -0.8 |
| Acq/dis. of non-produced non-fin. assets | 0.0 | 0.0 | 0.0 | 0.0 | 0.0 | 0.0 | 0.0 | 0.0 | 0.0 | 0.0 | 0.0 | 0.0 |
| B. Financial Account | 507.2 | 1081.4 | 574.2 | 31.7 | 127.9 | 96.2 | 44.4 | -14.0 | -58.4 | 169.6 | 219.9 | 50.3 |
| Official Investment (incl. Govt. Reserves) | 507.5 | 409.0 | -98.5 | 20.8 | -21.7 | -42.5 | 9.6 | -17.9 | -27.5 | 13.4 | -38.8 | -52.2 |
| Central Government | 479.1 | 115.0 | -364.1 | -5.7 | 230.8 | 236.5 | -24.5 | -17.2 | 7.4 | -48.4 | 202.9 | 251.3 |
| Other Official Investment | 28.4 | 294.0 | 265.6 | 26.5 | -252.5 | -279.0 | 34.1 | -0.7 | -34.9 | 61.8 | -241.7 | -303.5 |
| Private Investment (incl. errors & omissions) | 693.3 | 901.3 | 208.0 | -5.6 | 80.4 | 86.0 | 105.3 | 57.8 | -47.5 | 199.3 | 249.5 | 50.2 |
| Reserves | -693.6 | -228.9 | | 16.5 | 69.2 | | -70.5 | -53.9 | | -43.1 | 9.2 | |

1/Provisional

BALANCE OF PAYMENTS OF JAMAICA

US\$MN

| | Apr-Dec | | | Feb | | | Apr-Feb | | | Mar 1/ | | | Apr-Mar 1/ | | |
|--|----------------|----------------|---------------|---------------|---------------|---------------|----------------|----------------|---------------|---------------|---------------|--------------|----------------|----------------|---------------|
| | 2004/05 | 2005/06 | Change | 2004/05 | 2005/06 | Change | 2004/05 | 2005/06 | Change | 2004/05 | 2005/06 | Change | 2004/05 | 2005/06 | Change |
| 1. Current Account | -475.0 | -910.0 | -435.0 | -31.8 | -127.1 | -95.3 | -599.8 | -1142.7 | -542.9 | -43.9 | 14.4 | 58.3 | -643.7 | -1128.3 | -484.6 |
| A. Goods Balance | -1522.6 | -1980.1 | -457.5 | -145.1 | -249.9 | -104.8 | -1883.0 | -2494.2 | -611.2 | -240.8 | -186.2 | 54.6 | -2123.8 | -2680.4 | -556.6 |
| Exports | 1185.6 | 1283.1 | 97.5 | 129.9 | 170.1 | 40.2 | 1434.6 | 1597.9 | 163.3 | 132.2 | 203.3 | 71.1 | 1566.8 | 1801.2 | 234.4 |
| Imports | 2708.2 | 3263.2 | 555.0 | 275.0 | 420.0 | 145.0 | 3317.6 | 4092.1 | 774.5 | 373.0 | 389.5 | 16.5 | 3690.6 | 4481.6 | 791.0 |
| B. Services Balance | 369.5 | 399.3 | 29.8 | 64.3 | 69.6 | 5.3 | 489.0 | 542.5 | 53.5 | 81.3 | 97.1 | 15.8 | 570.3 | 639.7 | 69.4 |
| Transportation | -136.2 | -227.7 | -91.5 | -12.8 | -25.0 | -12.2 | -168.5 | -271.7 | -103.2 | -13.8 | -16.1 | -2.3 | -182.3 | -287.8 | -105.5 |
| Travel | 826.3 | 943.5 | 117.2 | 109.4 | 130.7 | 21.3 | 1044.7 | 1200.1 | 155.4 | 133.8 | 150.9 | 17.1 | 1178.5 | 1351.0 | 172.5 |
| Other Services | -320.6 | -316.5 | 4.1 | -32.3 | -36.1 | -3.8 | -387.2 | -385.9 | 1.3 | -38.7 | -37.7 | 1.0 | -425.9 | -423.5 | 2.4 |
| C. Income | -434.4 | -511.8 | -77.4 | -76.8 | -79.2 | -2.4 | -571.0 | -635.3 | -64.3 | -27.5 | -38.8 | -11.3 | -598.5 | -674.2 | -75.7 |
| Compensation of employees | 79.7 | 80.0 | 0.3 | 0.8 | 0.7 | -0.1 | 83.9 | 84.9 | 1.0 | 4.3 | 5.0 | 0.7 | 88.2 | 89.8 | 1.6 |
| Investment Income | -514.1 | -591.8 | -77.7 | -77.6 | -79.9 | -2.3 | -654.9 | -720.2 | -65.3 | -31.8 | -43.8 | -12.0 | -686.7 | -764.0 | -77.3 |
| D. Current Transfers | 1112.5 | 1182.6 | 70.1 | 125.8 | 132.4 | 6.6 | 1365.2 | 1444.3 | 79.1 | 143.1 | 142.3 | -0.8 | 1508.3 | 1586.6 | 78.3 |
| General Government | 132.4 | 94.6 | -37.8 | 12.6 | 12.0 | -0.6 | 157.9 | 118.3 | -39.6 | 16.9 | 12.0 | -4.9 | 174.8 | 130.3 | -44.5 |
| Other Sector | 980.1 | 1088.0 | 107.9 | 113.2 | 120.4 | 7.2 | 1207.3 | 1326.0 | 118.7 | 126.2 | 130.3 | 4.1 | 1333.5 | 1456.3 | 122.8 |
| 2. Capital & Financial Account | 696.7 | 1305.6 | 608.9 | 31.8 | 127.1 | 95.3 | 825.3 | 1518.6 | 693.3 | 43.9 | -14.4 | -58.3 | 878.8 | 1476.3 | 597.5 |
| A. Capital Account | 2.6 | -1.8 | -4.4 | 0.1 | -0.8 | -0.9 | 2.2 | -3.2 | -5.4 | -0.5 | -0.4 | 0.1 | 1.7 | -3.6 | -5.3 |
| Capital Transfers | 2.6 | -1.8 | -4.4 | 0.1 | -0.8 | -0.9 | 2.2 | -3.2 | -5.4 | -0.5 | -0.4 | 0.1 | 1.7 | -3.6 | -5.3 |
| General Government | 10.4 | 0.2 | -10.2 | 0.1 | 0.0 | -0.1 | 10.5 | 0.2 | -10.3 | 0.0 | 0.0 | 0.0 | 10.5 | 0.2 | -10.3 |
| Other Sector | -7.8 | -2.0 | 5.8 | 0.0 | -0.8 | -0.8 | -8.3 | -3.4 | 4.9 | -0.5 | -0.4 | 0.1 | -8.8 | -3.8 | 5.0 |
| Acq/disp. of non-produced non-fin. assets | 0.0 | 0.0 | 0.0 | 0.0 | 0.0 | 0.0 | 0.0 | 0.0 | 0.0 | 0.0 | 0.0 | 0.0 | 0.0 | 0.0 | 0.0 |
| B. Financial Account | 694.1 | 1307.4 | 613.3 | 31.7 | 127.9 | 96.2 | 823.1 | 1521.8 | 698.7 | 44.4 | -14.0 | -58.4 | 877.1 | 1479.9 | 602.8 |
| Other Official Investment (incl. Govt. Reserves) | 221.7 | 395.6 | 173.9 | 20.8 | -21.7 | -42.5 | 225.5 | 375.9 | 150.4 | 9.6 | -17.9 | -27.5 | 235.1 | 348.0 | 112.9 |
| Central Government | 225.7 | -124.4 | -350.1 | -5.7 | 230.8 | 236.5 | 625.2 | 96.8 | -528.4 | -24.5 | -17.2 | 7.4 | 600.7 | 69.7 | -531.0 |
| Other Official Investment | -4.0 | 520.0 | 524.0 | 26.5 | -252.5 | -279.0 | -399.7 | 279.1 | 678.8 | 34.1 | -0.7 | -34.9 | -365.6 | 278.3 | 643.9 |
| Private Investment (incl. errors & omissions) | 540.6 | 702.0 | 161.4 | -5.6 | 80.4 | 86.0 | 634.6 | 892.7 | 258.1 | 105.3 | 57.8 | -47.5 | 739.9 | 960.5 | 220.6 |
| Reserves | -289.9 | -185.8 | | 16.5 | 69.2 | | -262.5 | -122.7 | | -70.5 | -53.9 | | -333.0 | -176.6 | |

1/Provisional

BALANCE OF PAYMENTS OF JAMAICA

US\$MN

| | Jan-Dec 1999 | Jan-Dec 2000 | Jan-Dec 2001 | Jan-Dec 2002 | Jan-Dec 2003 | Jan-Dec 2004 | Jan-Dec 1/ 2005 |
|--|-----------------|-----------------|-----------------|-----------------|-----------------|-----------------|--------------------|
| 1. Current Account | -216.3 | -367.4 | -757.3 | -1074.4 | -772.6 | -509.4 | -1078.7 |
| A. Goods Balance | -1186.5 | -1441.5 | -1618.2 | -1870.5 | -1942.6 | -1944.5 | -2581.3 |
| Exports | 1499.1 | 1562.8 | 1454.4 | 1309.1 | 1385.6 | 1601.6 | 1664.3 |
| Imports | 2685.6 | 3004.3 | 3072.6 | 3179.6 | 3328.2 | 3546.1 | 4245.6 |
| B. Services Balance | 655.4 | 603.2 | 383.1 | 314.7 | 552.3 | 571.7 | 600.1 |
| Transportation | -233.6 | -256.6 | -256.2 | -245.6 | -143.6 | -150.3 | -273.8 |
| Travel | 1052.4 | 1123.9 | 1026.2 | 950.3 | 1102.7 | 1151.5 | 1295.7 |
| Other Services | -163.4 | -264.1 | -386.9 | -390.0 | -406.7 | -429.5 | -421.8 |
| C. Income | -332.5 | -349.9 | -437.8 | -605.5 | -571.4 | -582.7 | -675.9 |
| Compensation of employees | 70.3 | 67.4 | 74.6 | 82.1 | 70.7 | 84.5 | 88.5 |
| Investment Income | -402.8 | -417.3 | -512.4 | -687.6 | -642.1 | -667.2 | -764.4 |
| D. Current Transfers | 647.3 | 820.8 | 915.6 | 1086.9 | 1189.1 | 1446.1 | 1578.4 |
| General Government | 45.8 | 147.9 | 119.7 | 107.6 | 105.2 | 159.9 | 137.0 |
| Other Sector | 601.5 | 672.9 | 795.9 | 979.3 | 1083.9 | 1286.2 | 1441.4 |
| 2. Capital & Financial Account | 216.3 | 367.4 | 757.3 | 1074.4 | 772.6 | 509.4 | 1078.7 |
| A. Capital Account | 13.1 | 2.2 | -23.6 | -16.9 | 0.1 | 2.2 | -2.7 |
| Capital Transfers | 13.1 | 2.2 | -23.6 | -16.9 | -0.3 | 2.2 | -2.7 |
| General Government | 4.1 | 15.6 | 2.2 | 0.2 | 0.1 | 13.8 | 0.3 |
| Other Sector | 9.0 | -13.4 | -25.8 | -17.1 | -0.4 | -11.6 | -3.0 |
| B. Financial Account | 203.2 | 365.2 | 780.9 | 1091.3 | 772.5 | 507.2 | 1081.4 |
| Other Official Investment (incl. Govt. Reserves) | -299.5 | 429.5 | 626.0 | 101.2 | -366.4 | 507.5 | 409.0 |
| Central Government | -331.4 | 383.7 | 653.4 | 80.7 | -362.5 | 479.1 | 115.0 |
| Other Official Investment | 31.9 | 45.8 | -27.4 | 20.5 | -3.9 | 28.4 | 294.0 |
| Private Investment (incl. errors & omissions) | 370.9 | 455.0 | 1026.2 | 746.4 | 706.8 | 693.3 | 901.3 |
| Reserves | 131.8 | -519.3 | -871.3 | 243.7 | 432.1 | -693.6 | -228.9 |

| BALANCE OF PAYMENTS OF JAMAICA | | | | | | | |
|--|----------------|----------------|----------------|----------------|----------------|----------------|----------------|
| US\$MN | | | | | | | |
| | Apr-Mar | Apr-Mar | Apr-Mar | Apr-Mar | Apr-Mar | Apr-Mar 1/ | Apr-Mar 1/ |
| | 1999/00 | 2000/01 | 2001/02 | 2002/03 | 2003/04 | 2004/05 | 2005/06 |
| 1. Current Account | -304.1 | -497.2 | -753.2 | -1161.9 | -561.9 | -643.7 | -1128.3 |
| A. Goods Balance | -1251.9 | -1541.7 | -1577.3 | -2025.8 | -1832.0 | -2123.8 | -2680.4 |
| Exports | 1557.7 | 1517.7 | 1423.7 | 1313.6 | 1467.4 | 1566.8 | 1801.2 |
| Imports | 2809.6 | 3059.4 | 3001.0 | 3339.4 | 3299.3 | 3690.6 | 4481.6 |
| B. Services Balance | 622.4 | 592.7 | 323.2 | 367.8 | 596.5 | 570.3 | 639.7 |
| Transportation | -244.1 | -253.6 | -253.7 | -226.6 | -128.0 | -182.3 | -287.8 |
| Travel | 1058.3 | 1149.6 | 955.6 | 985.7 | 1144.6 | 1178.5 | 1351.0 |
| Other Services | -191.8 | -303.3 | -378.7 | -391.3 | -420.1 | -425.9 | -423.5 |
| C. Income | -369.5 | -382.4 | -457.6 | -613.0 | -565.8 | -598.5 | -674.2 |
| Compensation of employees | 67.7 | 67.4 | 73.4 | 82.8 | 71.9 | 88.2 | 89.8 |
| Investment Income | -437.2 | -449.8 | -531.0 | -695.8 | -637.6 | -686.7 | -764.0 |
| D. Current Transfers | 694.9 | 834.2 | 958.5 | 1109.1 | 1239.4 | 1508.3 | 1586.6 |
| General Government | 70.4 | 141.5 | 116.5 | 108.7 | 106.3 | 174.8 | 130.3 |
| Other Sector | 624.5 | 692.7 | 842.0 | 1000.4 | 1133.1 | 1333.5 | 1456.3 |
| 2. Capital & Financial Account | 304.1 | 497.2 | 753.2 | 1161.9 | 561.9 | 643.7 | 1128.3 |
| A. Capital Account | 12.5 | -6.7 | -24.2 | -12.1 | 0.5 | 1.7 | -3.6 |
| Capital Transfers | 12.5 | -6.7 | -24.2 | -12.1 | 0.1 | 1.7 | -3.6 |
| General Government | 9.0 | 10.2 | 0.4 | 0.2 | 3.5 | 10.5 | 0.2 |
| Other Sector | 3.5 | -16.9 | -24.6 | -12.3 | -3.4 | -8.8 | -3.8 |
| B. Financial Account | 291.6 | 503.9 | 777.4 | 1174.0 | 561.4 | 642.0 | 1131.9 |
| Other Official Investment (incl. Govt. Reserves) | -70.7 | 328.3 | 583.0 | -173.2 | 151.4 | 235.1 | 348.0 |
| Central Government | -123.2 | 342.0 | 591.2 | -223.2 | 142.0 | 600.7 | 69.7 |
| Other Official Investment | 52.5 | -13.7 | -8.2 | 50.0 | 9.4 | -365.6 | 278.3 |
| Private Investment (incl. errors & omissions) | 484.3 | 758.4 | 849.8 | 745.3 | 638.9 | 739.9 | 960.5 |
| Reserves | -122.0 | -582.8 | -655.4 | 601.9 | -228.9 | -333.0 | -176.6 |

1/Provisional