



INFLATION REPORT

SEPTEMBER 2003



Contents

A.	NOTE: SEPTEMBER 2003	i
B.	APPENDIX:	
	TABLE 1A: Jamaica's Inflation Rates	1
	TABLE 1B: CPI without Agriculture	2
	TABLE 2A: Contribution to Inflation	3
	TABLE 2B: Comparative FYTD Inflation	4
	TABLE 3: Regional Inflation	5
	TABLE 4: Main Contributory Items	6
	TABLE 5: Core Inflation	6
	TABLE 6: Inflation Decomposition	7



Fig 1. Monthly Changes in Inflation and the 3-Year Average Series

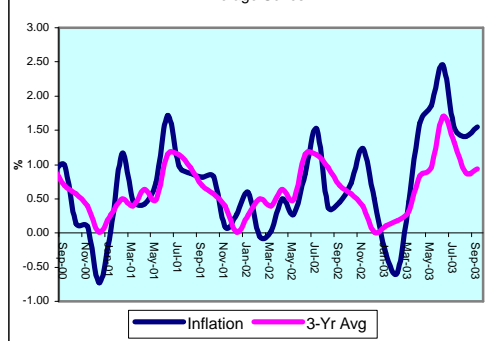


Fig. 2: Contribution to Inflation September 2003

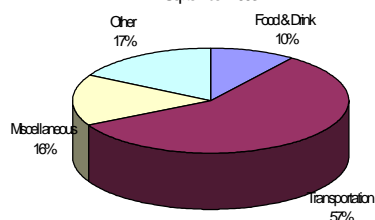


Fig 3. Monthly Changes in the Starchy Foods and the 3-Year Average Series

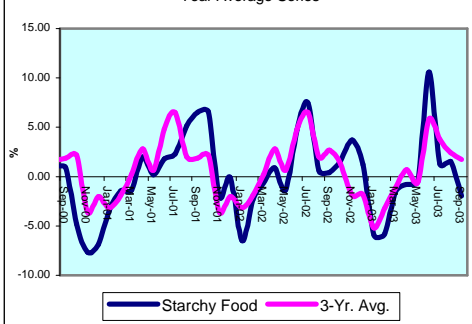
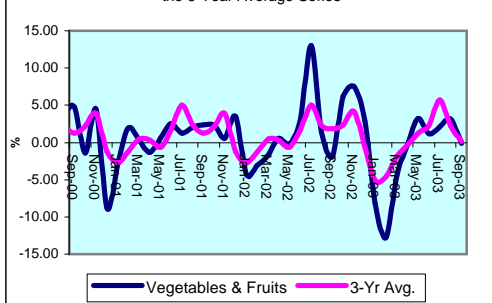


Fig 4. Monthly Changes in the Vegetables & Fruits and the 3-Year Average Series



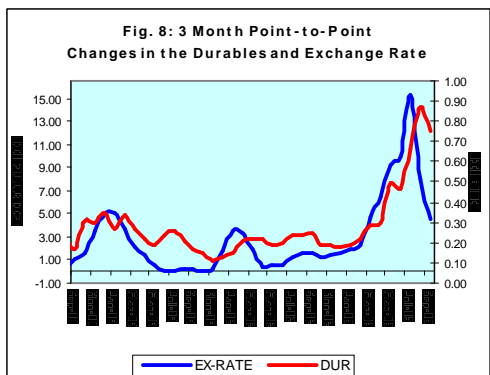
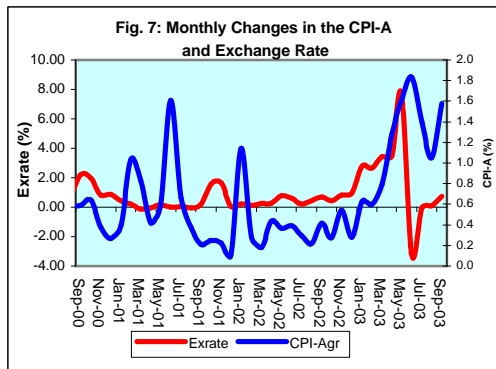
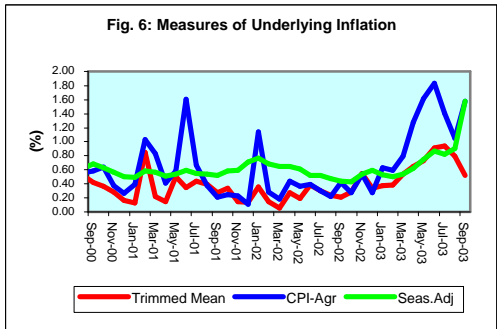
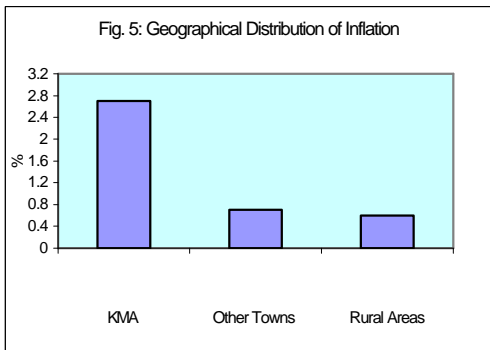
Introduction

1.0 The All Jamaica Consumer Price Index (CPI) increased by 1.6 per cent in September 2003. This outturn brought inflation for the first six months of FY 2003/04 to 10.8 per cent, compared to 4.1 per cent obtained over the same interval in FY 2002/03. For the first nine months of the calendar year, the inflation rate was 10.4 per cent, relative to 4.6 per cent in the comparable period of 2002. The point-to-point inflation rate as at September 2003 was 13.1 per cent, 7.2 percentage points above the rate recorded in the previous year. Similarly, the annual average inflation rate at September 2003 was 8.5 per cent, or 1.1 percentage points above the rate recorded for September 2002 (Table 1).

2.0 The major influences on September's inflation were the recent bus fare increases, higher tuition and other educational costs. Additional impulses emanated from higher telephone line rental, masons' and carpenters' wages (see Table 4). All the sub-indices of the CPI with the exception of *Household Furnishings & Furniture* recorded increases relative to August. The inflation outturn primarily reflected price increases for items in the *Transportation*, *Miscellaneous Expenses*, *Food & Drink* and *Housing & Other Housing Expenses* sub-indices. Inflation in these sub-indices were 13.1 per cent, 3.0 per cent, 0.2 per cent and 1.7 per cent, contributing 57.1 per cent, 16.1 per cent, 9.9 per cent, and 8.5 per cent, respectively, to the overall outturn (see Table 2).

Main Developments in the Basket

3.0 The out-turn in the *Transportation* sub-index was influenced primarily by an upward adjustment of 40 per cent in bus fares in the KMA. This increase was partially countered by a reduction in airfares of approximately 20.0 per cent (see Table 4). The decline in the price of air travel resulted from special discount offers, due to low demand. The change in the *Transportation* index also reflected increases in the price of petroleum and automotive lubricants.

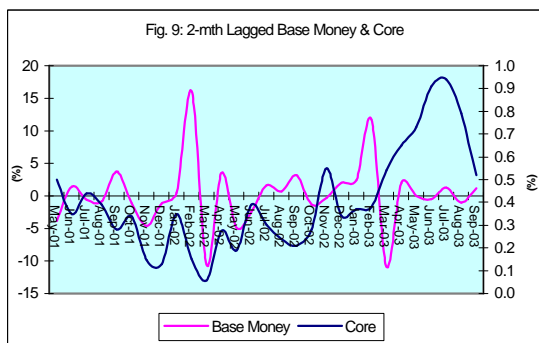


4.0 The *Miscellaneous* sub-index was chiefly influenced by increases in tuition fees, which grew on average by 12.9 per cent across the regions. There were other increases in the prices of schoolbooks and writing implements.

5.0 The upward movement in the *Food & Drink* sub-category of 0.2 per cent resulted primarily from higher prices in the *Meat, Poultry & Fish* and *Other Food & Beverages* sub-groups. Countervailing impulses resulted from price reductions in *Starchy Foods, Vegetables & Fruits*.

6.0 The *Housing & Other Housing Expenses* sub-index increased by 1.7 per cent, influenced by the *Other Housing Expenses* sub-group, as there was no movement in the *Rental* sub-group. The primary impetus for the increase resulted from higher telephone rates, which increased by 5.3 per cent. Additionally, there were increases in carpenters' and masons' wages of 16.2 per cent.

7.0 At the regional level, all areas reported price increases for the month. However, the change across the region reflected significant disparity. The CPI in the KMA increased by 2.7 per cent, while the indices for the Other Towns and Rural Areas increased by 0.7 per cent and 0.6 per cent, respectively. The pattern of change across the region was reflected mainly in the *Transportation* sub-index, which increased by 25.8 per cent in the KMA, while reflecting no change in the Other Towns and a decline of 0.4 per cent in the Rural Areas. The reduction in vegetable prices in the KMA was the primary factor driving the reduction in the *Vegetables & Fruits* sub-index in the All Jamaica index.



CPI-A

8.0 The measure of inflation that excludes agricultural prices (CPI-A) was **1.58 per cent for September**. This estimate was 0.53 percentage point higher than the measure in the previous month and 1.16 percentage points above that which obtained in September 2002. This index has trended sharply upward since the beginning of the calendar year in tandem with the accelerated depreciation in the exchange rate, particularly in the June quarter (see Figure 7). A similar pattern was observed in the durable products index (see Figure 8).

Core Inflation

9.0 The trimmed mean index was estimated to have increased by **0.52 per cent in September, 0.27 percentage points below the estimate for the previous month (Table 5)**. The declining trend since July contrasts with the previous three months and reflects the Bank's efforts at restricting monetary expansion. The 12-month point-to-point core inflation rate was 7.2 per cent, 4.4 percentage points above the comparable measure at September 2002. Similarly, the annual average core inflation rate of 4.7 per cent was 1.23 percentage points above the rate in the corresponding month of 2002.

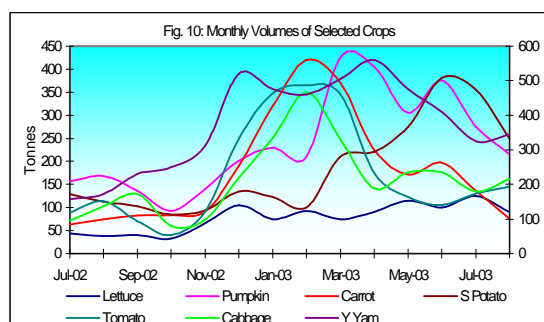


Table 1A
JAMAICA: INFLATION RATES

	1/ C.P.I	3 Month AVG. C.P.I	Monthly % change	3 Month * % change	3 Month # % change	12 Month* % change	12 Month# % change	FYTD % change	CYTD % change	
1999	Apr	1179.9	1179.7	-0.22	-0.84	-0.26	5.37	7.79	-0.22	-0.47
	May	1190.6	1184.3	0.91	1.17	0.02	5.46	7.53	0.68	0.43
	Jun	1205.9	1192.1	1.29	1.98	0.77	4.93	7.10	1.98	1.72
	Jul	1220.4	1205.6	1.20	3.43	2.20	4.99	6.67	3.21	2.94
	Aug	1234.3	1220.2	1.14	3.67	3.03	5.09	6.28	4.38	4.12
	Sep	1237.6	1230.7	0.27	2.63	3.24	5.26	6.02	4.66	4.39
	Oct	1247.5	1239.8	0.80	2.22	2.83	6.43	5.96	5.50	5.23
	Nov	1259.9	1248.3	0.99	2.07	2.31	7.39	6.03	6.55	6.28
	Dec	1265.9	1257.7	0.48	2.29	2.19	6.78	5.95	7.05	6.78
2000	Jan	1268.1	1264.6	0.17	1.65	2.00	6.57	5.88	7.24	0.17
	Feb	1273.1	1269.0	0.39	1.05	1.66	8.18	6.04	7.66	0.57
	Mar	1281.7	1274.3	0.68	1.25	1.31	8.39	6.25	8.39	1.25
	Apr	1294.4	1283.0	0.99	2.07	1.46	9.70	6.61	0.99	2.25
	May	1300.0	1292.0	0.43	2.11	1.81	9.19	6.92	1.43	2.69
	Jun	1311.4	1301.9	0.88	2.32	2.17	8.75	7.24	2.32	3.59
	Jul	1324.0	1311.8	0.96	2.29	2.24	8.49	7.53	3.30	4.59
	Aug	1335.9	1323.7	0.90	2.76	2.46	8.23	7.79	4.23	5.53
		Sep	1349.3	1336.4	1.00	2.89	2.65	9.03	8.10	5.27
	Oct	1351.1	1345.4	0.13	2.05	2.56	8.30	8.25	5.41	6.73
	Nov	1352.4	1350.9	0.10	1.24	2.05	7.34	8.25	5.52	6.83
	Dec	1342.6	1348.7	-0.72	-0.50	0.92	6.06	8.17	4.75	6.06
2001	Jan	1342.9	1345.9	0.02	-0.61	0.04	5.90	8.11	4.77	0.02
	Feb	1358.6	1348.0	1.17	0.46	-0.21	6.72	7.98	6.00	1.19
	Mar	1365.0	1355.5	0.47	1.67	0.50	6.50	7.82	6.50	1.67
	Apr	1370.8	1364.8	0.42	2.08	1.40	5.90	7.51	0.42	2.10
	May	1381.1	1372.3	0.75	1.65	1.80	6.24	7.27	1.18	2.87
	Jun	1404.9	1385.6	1.73	2.93	2.22	7.13	7.14	2.93	4.64
	Jul	1418.7	1401.6	0.98	3.50	2.70	7.15	7.03	3.94	5.67
	Aug	1431.1	1418.3	0.87	3.63	3.35	7.13	6.94	4.85	6.59
		Sep	1442.9	1430.9	0.82	2.70	3.27	6.94	6.78	5.71
	Oct	1454.9	1443.0	0.83	2.55	2.95	7.68	6.73	6.59	8.36
	Nov	1456.2	1451.3	0.09	1.75	2.33	7.68	6.76	6.68	8.46
	Dec	1460.2	1457.1	0.27	1.20	1.83	8.76	6.99	6.97	8.76
2002	Jan	1468.8	1461.7	0.59	0.96	1.30	9.38	7.28	7.60	0.59
	Feb	1468.0	1465.6	-0.05	0.81	0.99	8.05	7.39	7.55	0.53
	Mar	1468.5	1468.4	0.03	0.57	0.78	7.58	7.48	7.58	0.57
	Apr	1475.9	1470.8	0.50	0.48	0.62	7.67	7.62	0.50	1.08
	May	1480.0	1474.8	0.28	0.82	0.62	7.16	7.69	0.78	1.36
	Jun	1492.8	1482.9	0.86	1.65	0.99	6.25	7.61	1.65	2.23
	Jul	1515.6	1496.1	1.53	2.69	1.72	6.83	7.58	3.21	3.79
	Aug	1521.2	1509.9	0.37	2.79	2.38	6.29	7.51	3.59	4.18
		Sep	1528.0	1521.6	0.45	2.36	2.61	5.90	7.41	4.05
	Oct	1539.2	1529.5	0.73	1.56	2.23	5.80	7.25	4.82	5.41
	Nov	1558.3	1541.8	1.24	2.44	2.12	7.01	7.20	6.12	6.72
	Dec	1566.1	1554.5	0.50	2.49	2.16	7.25	7.08	6.65	7.25
2003	Jan	1561.3	1561.9	-0.31	1.44	2.12	6.30	6.83	6.32	-0.31
	Feb	1552.2	1559.9	-0.58	-0.39	1.17	5.74	6.64	5.70	-0.89
	Mar	1559.5	1557.7	0.47	-0.42	0.20	6.20	6.52	6.20	-0.42
	Apr	1584.0	1565.2	1.57	1.45	0.21	7.33	6.50	1.57	1.14
	May	1613.4	1585.6	1.86	3.94	1.65	9.01	6.66	3.46	3.02
	Jun	1653.1	1616.8	2.46	6.00	3.80	10.74	7.04	6.00	5.56
	Jul	1678.4	1648.3	1.53	5.96	5.31	10.74	7.38	7.62	7.17
	Aug	1702.0	1677.8	1.41	5.49	5.81	11.88	7.85	9.14	8.68
		Sep	1728.4	1702.9	1.55	4.56	5.33	13.11	8.47	10.83

1/ January 1988 = 100

* Point to point

Moving average

Table 1B
JAMAICA: CPI WITHOUT AGRICULTURE

	1/ CPI-A	3 Month AVG. CPI-A	Monthly % change	3 Month * % change	3 Month # % change	12 Month* % change	12 Month# % change	
2000	Apr	214.3	213.3	0.55	1.54	1.31	6.25	6.06
	May	215.1	214.2	0.36	1.27	1.34	6.15	6.03
	Jun	216.0	215.1	0.41	1.33	1.38	6.17	6.11
	Jul	216.6	215.9	0.28	1.05	1.22	5.71	6.14
	Aug	217.8	216.8	0.56	1.25	1.21	5.10	6.03
	Sep	219.0	217.8	0.59	1.43	1.24	5.19	5.94
2001	Oct	220.4	219.1	0.64	1.80	1.49	5.64	5.89
	Nov	221.3	220.3	0.38	1.61	1.61	5.44	5.81
	Dec	221.9	221.2	0.26	1.29	1.56	5.34	5.77
	Jan	222.7	222.0	0.40	1.04	1.31	5.54	5.76
	Feb	225.0	223.2	1.03	1.70	1.34	5.95	5.70
	Mar	226.9	224.9	0.83	2.28	1.67	6.47	5.74
	Apr	227.8	226.6	0.41	2.29	2.09	6.32	5.75
	May	229.2	228.0	0.58	1.84	2.14	6.55	5.79
	Jun	232.9	230.0	1.61	2.62	2.25	7.83	5.93
	Jul	234.4	232.1	0.66	2.88	2.45	8.24	6.15
Aug	235.3	234.2	0.37	2.66	2.72	8.04	6.39	
	Sep	235.8	235.1	0.21	1.25	2.26	7.64	6.60
2002	Oct	236.4	235.8	0.25	0.83	1.57	7.22	6.73
	Nov	236.9	236.3	0.22	0.69	0.92	7.06	6.86
	Dec	237.1	236.8	0.11	0.58	0.70	6.89	6.99
	Jan	239.9	238.0	1.14	1.48	0.92	7.68	7.16
	Feb	240.5	239.2	0.29	1.54	1.20	6.89	7.24
	Mar	241.0	240.5	0.18	1.62	1.55	6.20	7.21
	Apr	242.0	241.2	0.44	0.91	1.35	6.23	7.20
	May	242.9	242.0	0.37	0.99	1.17	6.00	7.15
	Jun	243.9	242.9	0.39	1.20	1.03	4.73	6.88
	Jul	244.6	243.8	0.30	1.06	1.08	4.35	6.55
Aug	245.1	244.5	0.22	0.91	1.06	4.19	6.23	
	Sep	246.2	245.3	0.42	0.94	0.97	4.41	5.96
2003	Oct	246.8	246.0	0.28	0.91	0.92	4.43	5.73
	Nov	248.2	247.1	0.54	1.24	1.03	4.76	5.54
	Dec	248.9	248.0	0.28	1.10	1.08	4.94	5.38
	Jan	250.4	249.2	0.63	1.45	1.26	4.41	5.11
	Feb	251.9	250.4	0.60	1.51	1.35	4.73	4.94
	Mar	253.9	252.1	0.79	2.02	1.66	5.36	4.87
	Apr	257.1	254.3	1.28	2.68	2.07	6.24	4.88
	May	261.3	257.4	1.61	3.72	2.81	7.56	5.02
	Jun	266.1	261.5	1.83	4.79	3.74	9.10	5.39
	Jul	269.8	265.7	1.40	4.93	4.48	10.30	5.89
Aug	272.6	269.5	1.05	4.35	4.69	11.22	6.48	
	Sep	276.9	273.1	1.58	4.09	4.45	12.51	7.16

1/ December 1993 = 100

* Point to point

Moving average

Table 2A
Component Contribution to Inflation
September 2003

	Weight in the CPI	Monthly Inflation(%)	Weighted Inflation	% Contribution to Inflation
FOOD & DRINK	0.5563	0.2	0.1461	9.9
- Meals Away From Home	0.0741	0.6	0.0477	3.2
- Meat Poultry & Fish	0.1613	0.6	0.1027	6.9
- Dairy Products Oils & Fats	0.0668	0.6	0.0372	2.5
- Baked Products Cereals & Breakfast Drink	0.0864	0.3	0.0301	2.0
- Starchy Foods	0.0525	-2.0	-0.1064	-7.2
- Vegetables & Fruits	0.0650	-0.1	-0.0089	-0.6
- Other Food & Beverages	0.0502	0.9	0.0438	3.0
FUELS & OTHER HOUSEHOLD SUPPLIES	0.0735	0.3	0.0313	2.1
- Household Supplies	0.0482	0.5	0.0262	1.8
- Fuels	0.0253	0.2	0.0051	0.3
HOUSING & OTHER HOUSING EXPENSES	0.0786	1.7	0.1261	8.5
- Rental	0.0209	0.0	0.0005	0.0
- Other Housing Expenses	0.0577	2.2	0.1256	8.5
HOUSEHOLD FURNISHINGS & FURNITURE	0.0283	-0.5	-0.0111	-0.8
- Furniture	0.0068	-2.0	-0.0137	-0.9
- Furnishings	0.0215	0.1	0.0026	0.2
HEALTHCARE & PERSONAL EXPENSES	0.0697	1.2	0.0839	5.7
PERSONAL CLOTHING FOOTWEAR & ACC.	0.0507	0.4	0.0209	1.4
- Clothing Materials	0.0055	0.2	0.0011	0.1
- Readymade Clothing & Accessories	0.0242	0.3	0.0078	0.5
- Footwear	0.0159	0.1	0.0023	0.2
- Making & Repairs	0.0051	1.9	0.0098	0.7
TRANSPORTATION	0.0644	13.1	0.8436	57.1
MISCELLANEOUS EXPENSES	0.0785	3.0	0.2370	16.0
			*	
ALL GROUPS	1.0000	1.55	1.48	100.0

* Differs from the 1.55 reported due to rounding

Table 2B
Component contribution to Inflation
Fiscal Year to September 2003

	Weight in the CPI	FYTD Inflation(%)	Weighted Inflation	% Contribution to Inflation
FOOD & DRINK	0.5563	10.8	5.89	57.5
- Meals Away From Home	0.0741	10.9	0.81	7.9
- Meat Poultry & Fish	0.1613	7.8	1.25	12.2
- Dairy Products Oils & Fats	0.0668	13.6	0.91	8.9
- Baked Products Cereals & Breakfast Dr	0.0864	12.8	1.11	10.8
- Starchy Foods	0.0525	10.1	0.53	5.2
- Vegetables & Fruits	0.0650	9.6	0.62	6.1
- Other Food & Beverages	0.0502	13.2	0.66	6.5
FUELS & OTHER HOUSEHOLD SUP	0.0735	15.3	0.91	8.9
- Household Supplies	0.0482	7.4	0.36	3.5
- Fuels	0.0253	21.7	0.55	5.4
HOUSING & OTHER HOUSING EXPE	0.0786	5.5	0.44	4.3
- Rental	0.0209	6.7	0.14	1.4
- Other Housing Expenses	0.0577	5.2	0.30	2.9
HOUSEHOLD FURNISHINGS & FUR	0.0283	4.2	0.12	1.1
- Furniture	0.0068	5.4	0.037	0.4
- Furnishings	0.0215	3.7	0.080	0.8
HEALTHCARE & PERSONAL EXPEN	0.0697	7.2	0.50	4.9
PERSONAL CLOTHING FOOTWEAR	0.0507	3.4	0.17	1.6
- Clothing Materials	0.0055	0.5	0.00	0.0
- Readymade Clothing & Accessories	0.0242	2.9	0.07	0.7
- Footwear	0.0159	4.5	0.07	0.7
- Making & Repairs	0.0051	4.7	0.02	0.2
TRANSPORTATION	0.0644	16.1	1.04	10.1
MISCELLANEOUS EXPENSES	0.0785	15.0	1.18	11.5
ALL GROUPS	1.0000	10.83	10.24	100.0

* Differs from the 10.83 reported due to rounding

Table 3
Regional Inflation
September 2003

	KMA (%)	Other Towns (%)	Rural (%)
FOOD & DRINK	0.0	0.5	0.2
- Meals Away From Home	0.7	0.6	0.6
- Meat Poultry & Fish	0.7	0.5	0.6
- Dairy Products Oils & Fats	0.6	0.7	0.4
- Baked Products Cereals & Breakfast Drink	0.2	0.4	0.5
- Starchy Foods	-1.8	-1.4	-2.3
- Vegetables & Fruits	-3.6	3.8	1.7
- Other Food & Beverages	1.0	-0.3	1.3
FUELS & OTHER HOUSEHOLD SUPPLIES	0.3	0.2	0.5
- Household Supplies	0.4	0.4	0.8
- Fuels	0.3	0.1	0.2
HOUSING & OTHER HOUSING EXPENSES	1.5	1.9	2.0
- Rental	0.0	0.0	0.0
- Other Housing Expenses	2.1	2.1	2.3
HOUSEHOLD FURNISHINGS & FURNITURE	-0.5	-0.2	-0.8
- Furniture	-0.8	-2.3	-2.7
- Furnishings	-0.4	0.8	0.2
HEALTHCARE & PERSONAL EXPENSES	1.2	1.2	1.2
PERSONAL CLOTHING FOOTWEAR & ACC.	0.5	0.3	0.5
- Clothing Materials	0.0	0.0	0.7
- Readymade Clothing & Accessories	0.6	0.4	0.0
- Footwear	0.2	0.2	0.0
- Making & Repairs	1.1	0.6	3.9
TRANSPORTATION	25.8	0.0	-0.4
MISCELLANEOUS EXPENSES	4.2	1.3	2.4
ALL GROUPS	2.7	0.7	0.6

Table 4
Main Contributory Items: September 2003

Items	% Change		
	KMA	Other Towns	Rural
Vegetables & Fruits			
Tomato	11.3	20.7	8.0
Carrot	-6.0	11.3	6.4
Cabbage	5.5	9.9	-6.2
Ackee	-18.0	-1.5	0.0
Avacado	-29.7	-4.0	-10.0
Ripe Banana	-10.8	-4.4	3.7
Starchy Foods			
Yellow Yam	-2.0	-3.0	-10.0
Lucea Yam	-4.3	1.2	-6.3
Irish Potato	-3.0	1.2	8.1
Dasheen	-2.9	2.6	4.4
Meat Poultry & Fish			
Beef - Sirloin	0.0	2.5	2.5
Beef - Roast	0.8	2.1	1.9
Pork - Leg	0.2	0.4	1.8
Tripe	9.7	0.7	-0.9
Fish - Pond	3.7	0.6	1.8
Other Food & Beverages			
Tomato Ketchup	2.2	1.6	0.3
Rum - White	2.2	0.3	0.0
Stout	2.6	0.5	0.5
Brown Sugar	1.6	0.8	0.0
Salt	0.6	0.9	5.0
Housing & Other Housing expenses			
Electricity			
Telephone	5.3	5.3	5.3
Carpenter	16.2	16.2	16.2
Mason	16.2	16.2	16.2
Healthcare & Personal Expenses			
Opticians' Fees	9.9	2.9	2.9
Tonics (50 caps.)	5.4	10.7	0.0
Transportation			
Bus fare	40.0	0.0	0.0
Petroleum	1.0	2.3	0.0
Airfare	-20.1	-20.1	-20.1
Miscellaneous Expenses			
Writing Equipment - Pen	10.5	0.0	16.7
Tuition	18.6	10.1	10.1
School Books	0.0	1.7	2.8

Table 5
Inflation: Actual & Core

	Monthly		Fiscal Year to Date		12-Mth Core	
	Actual	Core	Actual	Core	Pt to Pt	Average
2001/02						
Apr	0.42	0.14	0.42	0.14	4.04	4.18
May	0.75	0.50	1.18	0.65	4.29	4.17
Jun	1.73	0.35	2.93	1.00	4.30	4.17
Jul	0.98	0.44	3.94	1.44	4.46	4.22
Aug	0.87	0.39	4.85	1.84	4.33	4.26
Sep	0.82	0.28	5.71	2.12	4.18	4.26
Oct	0.83	0.34	6.59	2.46	4.15	4.25
Nov	0.09	0.15	6.68	2.61	4.01	4.23
Dec	0.27	0.13	6.97	2.75	3.98	4.23
Jan	0.59	0.35	7.60	3.11	4.22	4.24
Feb	-0.05	0.15	7.55	3.26	3.49	4.15
Mar	0.03	0.06	7.58	3.32	3.32	4.06
2002/03						
Apr	0.50	0.28	0.50	0.28	3.46	4.01
May	0.28	0.19	0.78	0.47	3.14	3.91
Jun	0.86	0.39	1.65	0.86	3.18	3.82
Jul	1.53	0.30	3.21	1.16	3.04	3.70
Aug	0.37	0.24	3.59	1.41	2.89	3.58
Sep	0.45	0.21	4.05	1.62	2.82	3.47
Oct	0.73	0.28	4.82	1.90	2.76	3.35
Nov	1.24	0.55	6.12	2.47	3.18	3.29
Dec	0.50	0.34	6.65	2.82	3.39	3.24
Jan	-0.31	0.37	6.32	3.20	3.41	3.17
Feb	-0.58	0.38	5.70	3.59	3.65	3.19
Mar	0.47	0.54	6.20	4.15	4.15	3.26
2003/04						
Apr	1.57	0.65	1.57	0.65	4.54	3.35
May	1.86	0.73	3.46	1.38	5.09	3.51
Jun	2.46	0.91	6.00	2.30	5.64	3.72
Jul	1.53	0.94	7.62	3.27	6.31	3.99
Aug	1.41	0.79	9.14	4.08	6.90	4.33
Sep	1.55	0.52	10.83	4.62	7.22	4.70

Table 6

Decomposition of Inflation Out-turn		
April - September 2003		
	(%) FYTD Inflation	Contribution
<u>Non-Core Shocks</u>	6.21	57.3%
<i>Miscellaneous Expenses</i>	1.04	9.6%
<i>Food & Drink</i>	3.79	35.0%
Agriculture	1.01	9.3%
Meals Away From Home	0.71	6.5%
Baked Products, Cereals & B'fast Drinks	0.97	9.0%
Meat, Poultry & Fish	<u>1.10</u>	10.1%
<i>Transportation</i>	0.78	7.2%
<i>Other</i>	<u>0.61</u>	5.6%
<u>Core</u>	<u>4.62</u>	<u>42.7%</u>
<u>TOTAL</u>	<u>10.83</u>	<u>100.0%</u>