



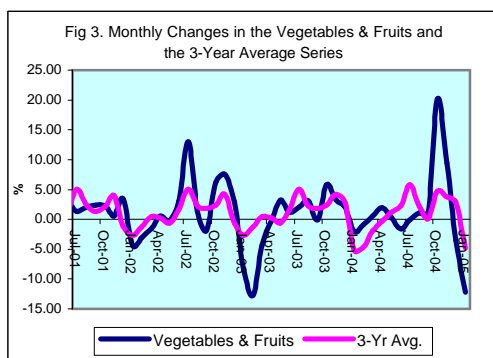
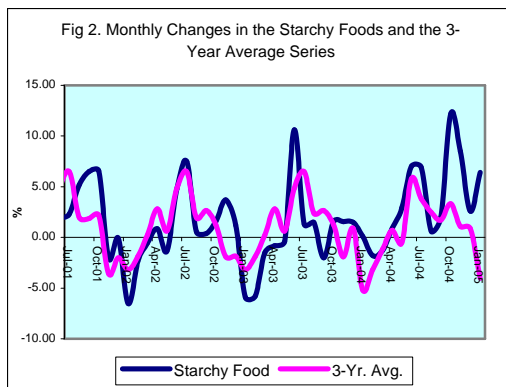
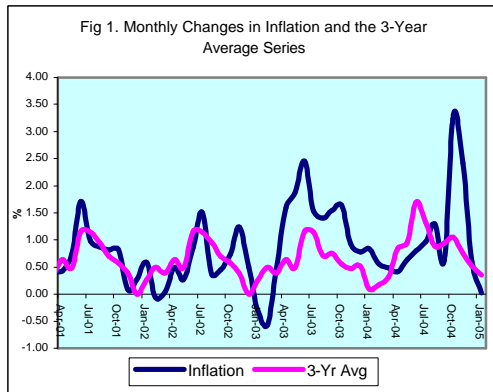
INFLATION REPORT

JANUARY 2005



Contents

A.	NOTE: JANUARY 2005	I
B.	APPENDIX:	
	TABLE 1A: Jamaica's Inflation Rates	1
	TABLE 1B: CPI without Agriculture	2
	TABLE 2 : Contribution to Inflation	3
	TABLE 3: Regional Inflation	4
	TABLE 4: Core Inflation	5
	TABLE 5: Inflation Decomposition	6



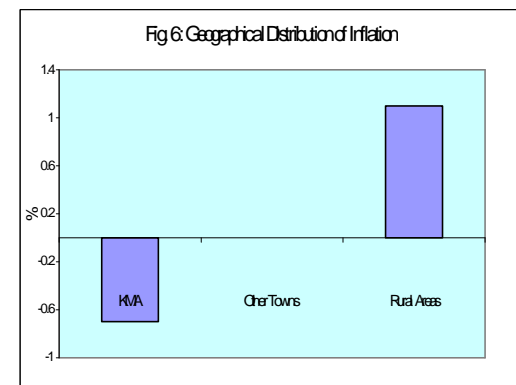
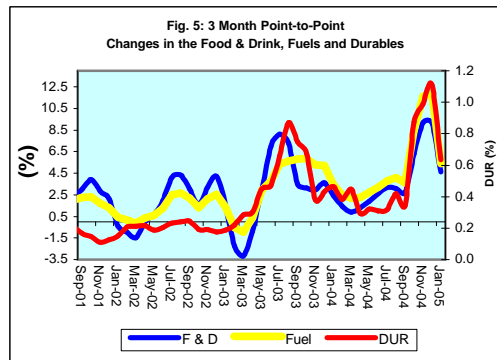
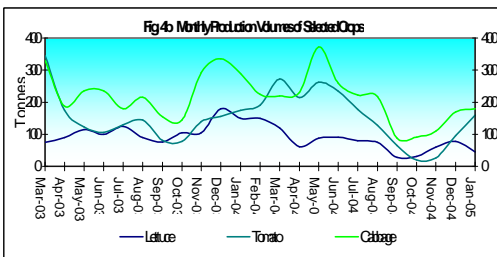
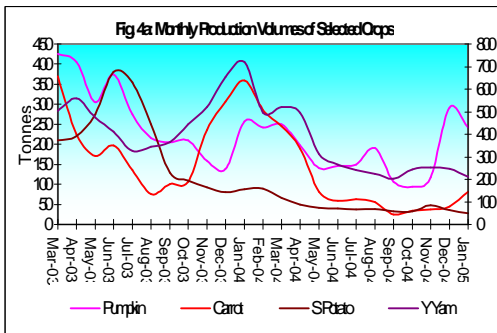
Introduction

1.0 The All Jamaica Consumer Price Index (CPI) remained unchanged in January 2005, relative to the previous month. This outturn indicated the continued normalization of price increases following the sharp upward adjustments after the passing of the Hurricane. Inflation for the first ten months of fiscal year (FY) 2004/05 remained at 11.6 per cent, and compares favourably with the 15.5 per cent obtained over the same interval in FY2003/04. The point-to-point inflation rate at January 2005 was 12.8 per cent, relative to 15.4 per cent recorded for the comparable period in the previous year. The mean annual inflation rate was 13.4 per cent, 0.2 percentage point lower than the rate obtained in the previous month, but higher than the 11.1 per cent recorded at January 2004 (Table 1).

2.0 The overall inflation outturn was primarily due to inflation in six sub-indices, being offset by deflation in the other two sub-indices. There were positive inflationary impulses primarily from the *Fuels & Other Household Supplies, Healthcare & Personal Expenses* and *Food & Drink* groups with offsetting movements in the *Housing & Other Housing Expenses* and *Transportation* groups. In this context, the major influences on the inflation outturn for the month emanated from reductions in utility rates and agricultural prices and increases in meat prices. The respective increases in the *Fuels & Other Household Supplies, Healthcare Expenses*, and *Food & Drink* sub-indices were 1.3 per cent, 0.5 per cent and 0.4 per cent. Providing countervailing impulses to these increases were respective declines of 3.2 per cent and 0.4 per cent in the *Housing & Other Housing Expenses* and *Transportation* sub-indices (Table 2A).

Main Developments in the Basket

3.0 The increase in *Food & Drink* emanated mainly from the *Starchy Foods, Meat, Poultry & Fish, and Meals Away From Home* sub-groups. These subgroups had respective increases of 6.4 per cent, 1.4 per cent and 1.2 per cent. The prices of starchy food items continue to be affected by the impact of the Hurricane, as longer term crops such as tubers are still in short supply (see Table 4). However, there were countervailing price impulses from the *Vegetables & Fruits* sub-group, resulting from a significant improvement in supplies (see Figure 4b).



The primary factor, influencing the increase in *Meals Away From Home*, was related to movements in the prices of patty and beer. The increase in *Meat, Poultry & Fish* stemmed primarily from prices of beef and fish in the rural areas catching up to prices in the urban areas.

4.0 For Fuels & Other Household Supplies, upward adjustments in the prices of kerosene, charcoal and cooking gas were the main underlying factors. Additionally, there were increases in the prices of miscellaneous household supplies such as candles and floor polish (see Table 4). The increases in the prices of kerosene and cooking gas were primarily related to the increase in international crude oil prices, in the month, relative to December. The increase of 0.5 per cent in the *Healthcare & Personal Expenses* sub-index primarily reflected increases in doctor and dentist fees, as well as in the prices of deodorant and tonics.

5.0 The downward movement in the sub-index for Housing & Other Housing Expenses was largely influenced by an average reduction of 11.5 per cent in electricity rates. Other countervailing price impulses of note occurred in *Transportation*, which declined by 0.4 per cent. The main items influencing this downward movement was an average reduction of 6.9 per cent and 2.1 in airfares and petroleum prices, respectively (see Table 4). These movements occurred in a context where international oil prices decreased in November and December after reaching a peak of US\$53.1 per barrel in October 2004.

6.0 There was significant disparity in inflation across the regions. The CPI in the Rural Areas increased by 1.1 per cent, while the index in the KMA decreased by 0.7 per cent and was relatively unchanged in the Rural Areas. This pattern was largely reflected in *Food & Drink* and *Fuels & Other Housing Expenses*. The disparity in *Food & Drink* largely reflected higher increases (2.1 per cent) in meat, poultry & fish prices in the rural areas. There were respective increases of 0.8 per cent and 1.4 per cent in this sub-group in the KMA and Other Towns. The other disparity of note occurred in *Fuels & Other Household Supplies*. There was an increase of 2.9 per cent, 1.3 per cent and 0.3 per cent in the Rural Areas, Other Towns and KMA, respectively. The higher increase in Rural Areas primarily reflected a 5.4 per cent increase in kerosene prices relative to a 1.3 per cent increase in the Other Towns and no change in the KMA (see Table 4).

Core Inflation

Trimmed Mean

7.0 The trimmed mean index was estimated to have increased by 0.36 per cent in January, 0.11 percentage point below the previous month's measure (Table 5). This represents continued normalization in the core outturn to be consistent with a long-run expectation of approximately 4 per cent to 5 per cent per annum. The 12-month point-to-point core inflation core inflation at January 2005 was 5.1 per cent, relative to the 8.2 per cent recorded for the similar period of 2004. The annual average core inflation rate of 6.3 per cent for the month was similar to what obtained in the same period of 2004, but 0.2 percentage point lower than the previous month's rate.

Other Measures of Underlying Inflation

8.0 The measure of underlying inflation that excludes agricultural prices (CPI-A) was 0.4 per cent in January, down from the 0.7 per cent in the previous month. Since May 2004, the changes in the CPI-A index have been increasing, and peaked at 1.6 per cent in October 2004. However, this measure has been trending downwards since October 2004. This downward trend in non-agricultural inflation since October 2004 may have been reflecting a return to normalcy in other prices in the CPI basket since the passage of the Hurricane in September 2004. Chief among these are lower fuel price charges since the price of international crude oil peaked in October 2004.

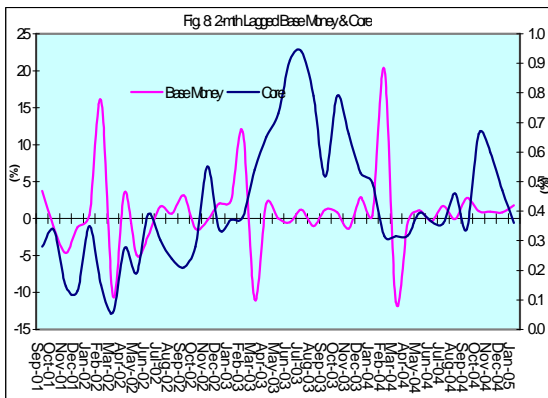
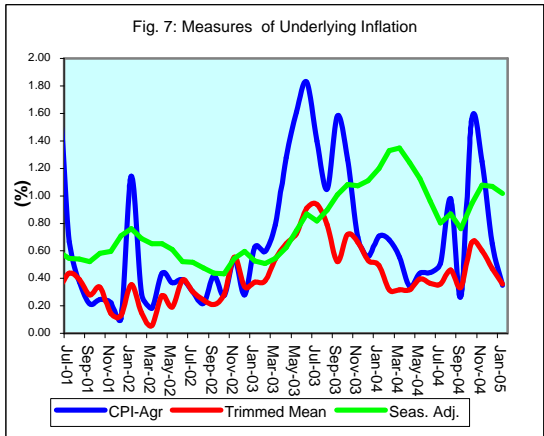


Table 1A
JAMAICA: INFLATION RATES

	1/ C.P.I	3 Month AVG. C.P.I	Monthly % change	3 Month * % change	3 Month # % change	12 Month* % change	12 Month# % change	FYTD % change	CYTD % change	
2000	Jan	1268.1	1264.6	0.17	1.65	2.00	6.57	5.88	7.24	0.17
	Feb	1273.1	1269.0	0.39	1.05	1.66	8.18	6.04	7.66	0.57
	Mar	1281.7	1274.3	0.68	1.25	1.31	8.39	6.25	8.39	1.25
	Apr	1294.4	1283.0	0.99	2.07	1.46	9.70	6.61	0.99	2.25
	May	1300.0	1292.0	0.43	2.11	1.81	9.19	6.92	1.43	2.69
	Jun	1311.4	1301.9	0.88	2.32	2.17	8.75	7.24	2.32	3.59
	Jul	1324.0	1311.8	0.96	2.29	2.24	8.49	7.53	3.30	4.59
	Aug	1335.9	1323.7	0.90	2.76	2.46	8.23	7.79	4.23	5.53
	Sep	1349.3	1336.4	1.00	2.89	2.65	9.03	8.10	5.27	6.59
	Oct	1351.1	1345.4	0.13	2.05	2.56	8.30	8.25	5.41	6.73
	Nov	1352.4	1350.9	0.10	1.24	2.05	7.34	8.25	5.52	6.83
	Dec	1342.6	1348.7	-0.72	-0.50	0.92	6.06	8.17	4.75	6.06
2001	Jan	1342.9	1345.9	0.02	-0.61	0.04	5.90	8.11	4.77	0.02
	Feb	1358.6	1348.0	1.17	0.46	-0.21	6.72	7.98	6.00	1.19
	Mar	1365.0	1355.5	0.47	1.67	0.50	6.50	7.82	6.50	1.67
	Apr	1370.8	1364.8	0.42	2.08	1.40	5.90	7.51	0.42	2.10
	May	1381.1	1372.3	0.75	1.65	1.80	6.24	7.27	1.18	2.87
	Jun	1404.9	1385.6	1.73	2.93	2.22	7.13	7.14	2.93	4.64
	Jul	1418.7	1401.6	0.98	3.50	2.70	7.15	7.03	3.94	5.67
	Aug	1431.1	1418.3	0.87	3.63	3.35	7.13	6.94	4.85	6.59
	Sep	1442.9	1430.9	0.82	2.70	3.27	6.94	6.78	5.71	7.47
	Oct	1454.9	1443.0	0.83	2.55	2.95	7.68	6.73	6.59	8.36
	Nov	1456.2	1451.3	0.09	1.75	2.33	7.68	6.76	6.68	8.46
	Dec	1460.2	1457.1	0.27	1.20	1.83	8.76	6.99	6.97	8.76
2002	Jan	1468.8	1461.7	0.59	0.96	1.30	9.38	7.28	7.60	0.59
	Feb	1468.0	1465.6	-0.05	0.81	0.99	8.05	7.39	7.55	0.53
	Mar	1468.5	1468.4	0.03	0.57	0.78	7.58	7.48	7.58	0.57
	Apr	1475.9	1470.8	0.50	0.48	0.62	7.67	7.62	0.50	1.08
	May	1480.0	1474.8	0.28	0.82	0.62	7.16	7.69	0.78	1.36
	Jun	1492.8	1482.9	0.86	1.65	0.99	6.25	7.61	1.65	2.23
	Jul	1515.6	1496.1	1.53	2.69	1.72	6.83	7.58	3.21	3.79
	Aug	1521.2	1509.9	0.37	2.79	2.38	6.29	7.51	3.59	4.18
	Sep	1528.0	1521.6	0.45	2.36	2.61	5.90	7.41	4.05	4.64
	Oct	1539.2	1529.5	0.73	1.56	2.23	5.80	7.25	4.82	5.41
	Nov	1558.3	1541.8	1.24	2.44	2.12	7.01	7.20	6.12	6.72
	Dec	1566.1	1554.5	0.50	2.49	2.16	7.25	7.08	6.65	7.25
2003	Jan	1561.3	1561.9	-0.31	1.44	2.12	6.30	6.83	6.32	-0.31
	Feb	1552.2	1559.9	-0.58	-0.39	1.17	5.74	6.64	5.70	-0.89
	Mar	1559.5	1557.7	0.47	-0.42	0.20	6.20	6.52	6.20	-0.42
	Apr	1584.0	1565.2	1.57	1.45	0.21	7.33	6.50	1.57	1.14
	May	1613.4	1585.6	1.86	3.94	1.65	9.01	6.66	3.46	3.02
	Jun	1653.1	1616.8	2.46	6.00	3.80	10.74	7.04	6.00	5.56
	Jul	1678.4	1648.3	1.53	5.96	5.31	10.74	7.38	7.62	7.17
	Aug	1702.0	1677.8	1.41	5.49	5.81	11.88	7.85	9.14	8.68
	Sep	1728.4	1702.9	1.55	4.56	5.33	13.11	8.47	10.83	10.36
	Oct	1756.7	1729.0	1.64	4.67	4.90	14.13	9.17	12.65	12.17
	Nov	1773.0	1752.7	0.93	4.17	4.46	13.78	9.74	13.69	13.21
	Dec	1786.8	1772.2	0.78	3.38	4.07	14.09	10.32	14.58	14.09
2004	Jan	1801.8	1787.2	0.84	2.57	3.36	15.40	11.08	15.54	0.84
	Feb	1811.9	1800.2	0.56	2.19	2.71	16.73	11.99	16.18	1.40
	Mar	1820.8	1811.5	0.49	1.90	2.22	16.76	12.86	16.76	1.90
	Apr	1828.2	1820.3	0.41	1.47	1.85	15.42	13.52	0.41	2.32
	May	1839.9	1829.6	0.64	1.55	1.64	14.04	13.93	1.05	2.97
	Jun	1854.8	1841.0	0.81	1.87	1.63	12.20	14.03	1.87	3.81
	Jul	1872.8	1855.8	0.97	2.44	1.95	11.58	14.08	2.86	4.81
	Aug	1897.3	1875.0	1.31	3.12	2.48	11.47	14.02	4.20	6.18
	Sep	1909.2	1893.1	0.63	2.93	2.83	10.46	13.77	4.86	6.85
	Oct	1972.2	1926.2	3.30	5.31	3.79	12.27	13.61	8.32	10.38
	Nov	2020.0	1967.1	2.42	6.47	4.92	13.93	13.62	10.94	13.05
	Dec	2032.1	2008.1	0.60	6.44	6.07	13.73	13.60	11.60	13.73
2005	Jan	2032.8	2028.3	0.03	3.07	5.30	12.82	13.39	11.64	0.03

1/ January 1988 = 100

* Point to point

Moving average

Source: STATIN

Table 1B
JAMAICA: CPI WITHOUT AGRICULTURE

	1/ CPI-A	3 Month AVG. CPI-A	Monthly % change	3 Month * % change	3 Month # % change	12 Month* % change	12 Month# % change	
2000	Apr	214.3	213.3	0.55	1.54	1.31	6.25	6.06
	May	215.1	214.2	0.36	1.27	1.34	6.15	6.03
	Jun	216.0	215.1	0.41	1.33	1.38	6.17	6.11
	Jul	216.6	215.9	0.28	1.05	1.22	5.71	6.14
	Aug	217.8	216.8	0.56	1.25	1.21	5.10	6.03
	Sep	219.0	217.8	0.59	1.43	1.24	5.19	5.94
	Oct	220.4	219.1	0.64	1.80	1.49	5.64	5.89
	Nov	221.3	220.3	0.38	1.61	1.61	5.44	5.81
	Dec	221.9	221.2	0.26	1.29	1.56	5.34	5.77
2001	Jan	222.7	222.0	0.40	1.04	1.31	5.54	5.76
	Feb	225.0	223.2	1.03	1.70	1.34	5.95	5.70
	Mar	226.9	224.9	0.83	2.28	1.67	6.47	5.74
	Apr	227.8	226.6	0.41	2.29	2.09	6.32	5.75
	May	229.2	228.0	0.58	1.84	2.14	6.55	5.79
	Jun	232.9	230.0	1.61	2.62	2.25	7.83	5.93
	Jul	234.4	232.1	0.66	2.88	2.45	8.24	6.15
	Aug	235.3	234.2	0.37	2.66	2.72	8.04	6.39
	Sep	235.8	235.1	0.21	1.25	2.26	7.64	6.60
	Oct	236.4	235.8	0.25	0.83	1.57	7.22	6.73
	Nov	236.9	236.3	0.22	0.69	0.92	7.06	6.86
	Dec	237.1	236.8	0.11	0.58	0.70	6.89	6.99
2002	Jan	239.9	238.0	1.14	1.48	0.92	7.68	7.16
	Feb	240.5	239.2	0.29	1.54	1.20	6.89	7.24
	Mar	241.0	240.5	0.18	1.62	1.55	6.20	7.21
	Apr	242.0	241.2	0.44	0.91	1.35	6.23	7.20
	May	242.9	242.0	0.37	0.99	1.17	6.00	7.15
	Jun	243.9	242.9	0.39	1.20	1.03	4.73	6.88
	Jul	244.6	243.8	0.30	1.06	1.08	4.35	6.55
	Aug	245.1	244.5	0.22	0.91	1.06	4.19	6.23
	Sep	246.2	245.3	0.42	0.94	0.97	4.41	5.96
	Oct	246.8	246.0	0.28	0.91	0.92	4.43	5.73
	Nov	248.2	247.1	0.54	1.24	1.03	4.76	5.54
	Dec	248.9	248.0	0.28	1.10	1.08	4.94	5.38
2003	Jan	250.4	249.2	0.63	1.45	1.26	4.41	5.11
	Feb	251.9	250.4	0.60	1.51	1.35	4.73	4.94
	Mar	253.9	252.1	0.79	2.02	1.66	5.36	4.87
	Apr	257.1	254.3	1.28	2.68	2.07	6.24	4.88
	May	261.3	257.4	1.61	3.72	2.81	7.56	5.02
	Jun	266.1	261.5	1.83	4.79	3.74	9.10	5.39
	Jul	269.8	265.7	1.40	4.93	4.48	10.30	5.89
	Aug	272.6	269.5	1.05	4.35	4.69	11.22	6.48
	Sep	276.9	273.1	1.58	4.09	4.45	12.51	7.16
	Oct	280.5	276.7	1.26	3.95	4.13	13.62	7.93
	Nov	282.4	279.9	0.70	3.58	3.87	13.79	8.69
	Dec	284.0	282.3	0.56	2.54	3.35	14.11	9.45
2004	Jan	286.0	284.1	0.71	1.97	2.69	14.20	10.27
	Feb	287.9	286.0	0.68	1.96	2.16	14.30	11.06
	Mar	289.5	287.8	0.56	1.95	1.96	14.04	11.78
	Apr	290.5	289.3	0.34	1.58	1.83	12.98	12.34
	May	291.8	290.6	0.44	1.34	1.62	11.68	12.67
	Jun	293.1	291.8	0.44	1.23	1.38	10.16	12.73
	Jul	294.6	293.2	0.51	1.40	1.32	9.18	12.61
	Aug	297.5	295.0	0.98	1.94	1.52	9.10	12.41
	Sep	298.3	296.8	0.27	1.77	1.70	7.70	11.98
	Oct	302.9	299.6	1.56	2.83	2.18	8.01	11.50
	Nov	306.7	302.6	1.25	3.11	2.57	8.61	11.06
	Dec	308.7	306.1	0.65	3.50	3.15	8.71	10.62
2005	Jan	309.8	308.4	0.35	2.27	2.96	8.33	10.14

1/ December 1993 = 100

* Point to point

Moving average

Source: BOJ

Table 2
Component Contribution to Inflation
January 2005

	Weight in the CPI	Monthly Inflation(%)	Weighted Inflation
FOOD & DRINK	0.5563	0.4	0.0034
- Meals Away From Home	0.0741	1.2	0.0876
- Meat Poultry & Fish	0.1613	1.4	0.2230
- Dairy Products Oils & Fats	0.0668	0.8	0.0560
- Baked Products Cereals & Breakfast Drink	0.0864	0.4	0.0379
- Starchy Foods	0.0525	6.4	0.3346
- Vegetables & Fruits	0.0650	-12.2	-0.7921
- Other Food & Beverages	0.0502	1.1	0.0564
FUELS & OTHER HOUSEHOLD SUPPLIES	0.0735	1.3	0.0781
- Household Supplies	0.0482	0.7	0.0359
- Fuels	0.0253	1.7	0.0422
HOUSING & OTHER HOUSING EXPENSES	0.0786	-3.2	-0.2289
- Rental	0.0209	0.3	0.0055
- Other Housing Expenses	0.0577	-4.1	-0.2344
HOUSEHOLD FURNISHINGS & FURNITURE	0.0283	0.2	0.0060
- Furniture	0.0068	-0.4	-0.0026
- Furnishings	0.0215	0.4	0.0086
HEALTHCARE & PERSONAL EXPENSES	0.0697	0.5	0.0354
PERSONAL CLOTHING FOOTWEAR & ACC.	0.0507	0.4	0.0198
- Clothing Materials	0.0055	0.1	0.0008
- Readymade Clothing & Accessories	0.0242	0.4	0.0086
- Footwear	0.0159	0.5	0.0072
- Making & Repairs	0.0051	0.6	0.0032
TRANSPORTATION	0.0644	-0.4	-0.0247
MISCELLANEOUS EXPENSES	0.0785	0.1	0.0064
			*
ALL GROUPS	1.0000	0.03	0.01

* May differ from the 0.03 reported due to rounding

Table 3
Regional Inflation
January 2005

	KMA (%)	Other Towns (%)	Rural (%)
FOOD & DRINK	-0.9	0.3	1.7
- Meals Away From Home	1.7	0.6	0.6
- Meat Poultry & Fish	0.8	1.4	2.1
- Dairy Products Oils & Fats	0.7	0.7	1.1
- Baked Products Cereals & Breakfast Drink	0.2	0.4	0.7
- Starchy Foods	2.9	6.3	7.9
- Vegetables & Fruits	-15.3	-11.6	-8.8
- Other Food & Beverages	0.9	0.7	1.6
FUELS & OTHER HOUSEHOLD SUPPLIES	0.3	1.3	2.9
- Household Supplies	0.6	0.9	0.9
- Fuels	0.0	1.5	4.3
HOUSING & OTHER HOUSING EXPENSES	-2.8	-3.6	-3.9
- Rental	0.3	0.0	0.0
- Other Housing Expenses	-4.0	-4.0	-4.3
HOUSEHOLD FURNISHINGS & FURNITURE	0.0	0.3	0.2
- Furniture	0.0	-0.6	-0.6
- Furnishings	0.0	0.7	0.6
HEALTHCARE & PERSONAL EXPENSES	0.4	1.0	0.4
PERSONAL CLOTHING FOOTWEAR & ACCESSORIES	0.2	0.7	0.4
- Clothing Materials	0.0	0.9	0.0
- Readymade Clothing & Accessories	0.2	0.7	0.3
- Footwear	0.3	0.7	0.5
- Making & Repairs	0.2	1.0	1.0
TRANSPORTATION	-0.4	-0.4	-0.3
MISCELLANEOUS EXPENSES	0.0	0.2	0.1
ALL GROUPS	-0.7	0.0	1.1

Table 4
Inflation: Headline & Core

	Monthly		Fiscal Year to Date		12-Mth Core	
	Actual	Core	Actual	Core	Pt to Pt	Average
2001/02						
Apr	0.42	0.14	0.42	0.14	4.04	4.18
May	0.75	0.50	1.18	0.65	4.29	4.17
Jun	1.73	0.35	2.93	1.00	4.30	4.17
Jul	0.98	0.44	3.94	1.44	4.46	4.22
Aug	0.87	0.39	4.85	1.84	4.33	4.26
Sep	0.82	0.28	5.71	2.12	4.18	4.26
Oct	0.83	0.34	6.59	2.46	4.15	4.25
Nov	0.09	0.15	6.68	2.61	4.01	4.23
Dec	0.27	0.13	6.97	2.75	3.98	4.23
Jan	0.59	0.35	7.60	3.11	4.22	4.24
Feb	-0.05	0.15	7.55	3.26	3.49	4.15
Mar	0.03	0.06	7.58	3.32	3.32	4.06
2002/03						
Apr	0.50	0.28	0.50	0.28	3.46	4.01
May	0.28	0.19	0.78	0.47	3.14	3.91
Jun	0.86	0.39	1.65	0.86	3.18	3.82
Jul	1.53	0.30	3.21	1.16	3.04	3.70
Aug	0.37	0.24	3.59	1.41	2.89	3.58
Sep	0.45	0.21	4.05	1.62	2.82	3.47
Oct	0.73	0.28	4.82	1.90	2.76	3.35
Nov	1.24	0.55	6.12	2.47	3.18	3.29
Dec	0.50	0.34	6.65	2.82	3.39	3.24
Jan	-0.31	0.37	6.32	3.20	3.41	3.17
Feb	-0.58	0.38	5.70	3.59	3.65	3.19
Mar	0.47	0.54	6.20	4.15	4.15	3.26
2003/04						
Apr	1.57	0.65	1.57	0.65	4.54	3.35
May	1.86	0.73	3.46	1.38	5.09	3.51
Jun	2.46	0.91	6.00	2.30	5.64	3.72
Jul	1.53	0.94	7.62	3.27	6.31	3.99
Aug	1.41	0.79	9.14	4.08	6.90	4.33
Sep	1.55	0.52	10.83	4.62	7.22	4.70
Oct	1.64	0.79	12.65	5.45	7.77	5.12
Nov	0.93	0.66	13.69	6.14	7.89	5.51
Dec	0.78	0.53	14.58	6.70	8.09	5.90
Jan	0.84	0.50	15.54	7.23	8.22	6.30
Feb	0.56	0.32	16.18	7.57	8.15	6.68
Mar	0.49	0.32	16.76	7.91	7.91	6.99
2004/05						
Apr	0.41	0.32	0.41	0.32	7.55	7.24
May	0.64	0.39	1.05	0.71	7.20	7.41
Jun	0.81	0.36	1.87	1.08	6.62	7.48
Jul	0.97	0.36	2.86	1.44	6.00	7.45
Aug	1.31	0.46	4.20	1.91	5.66	7.34
Sep	0.63	0.34	4.86	2.25	5.46	7.19
Oct	3.30	0.66	8.32	2.93	5.33	6.98
Nov	2.42	0.60	10.94	3.54	5.26	6.76
Dec	0.60	0.47	11.60	4.03	5.20	6.52
Jan	0.03	0.36	11.64	4.41	5.07	6.26

Table 5

Decomposition of Inflation Out-turn		
April 2004 - January 2005		
	(%)	
	FYTD Inflation	Contribution
<u>Non-Core Shocks</u>	7.2	62.1%
<i>Food & Drink</i>	5.1	43.9%
Meat, Poultry & Fish	1.4	11.8%
Starchy Foods	2.9	24.9%
Vegetables & Fruits	0.8	7.2%
<i>Household Supplies</i>	0.7	6.3%
<i>Other Housing Expenses</i>	0.3	2.7%
<i>Other</i>	1.1	9.2%
<u>Core</u>	<u>4.4</u>	<u>37.9%</u>
<u>TOTAL</u>	<u>11.6</u>	<u>100.0%</u>