



Short term Inflation Analyses and Forecasts

December 2013

Bank of Jamaica

Foreword

This report reviews recent trends in inflation and presents the outlook for the remainder of the fiscal year. The analysis is based on trends in short-term domestic demand and supply indicators as well as imported inflation. These factors inform the assumptions for the short-term inflation forecasting model – *Monthly Inflation Sub-Index Model (MISI)*.

Table of Contents

1.0 Review of Outturn	1
2.0 Factors underpinning the revised forecast	3
2.1 Trends in demand	3
2.2 Trends in supply	4
2.3 Import prices	5
2.4 Trends in Core Inflation	6
3.0 Revised Forecast	7
4.0 Summary and Conclusion	8
Appendices	9

Tables and figures

Figure 1: Trend in monthly inflation	1
Figure 2: Regional Inflation	1
Figure 3: Inflation Contribution	2
Figure 4: Short-term Indicators of Demand	3
Figure 5: Industrial Electricity Sales	4
Figure 6: International Commodity Price	5
Figure 7: Core Inflation (12-month change)	6
Figure 8: Inflation Fan Chart	7
Figure 9: Trends in selected agriculture production	9

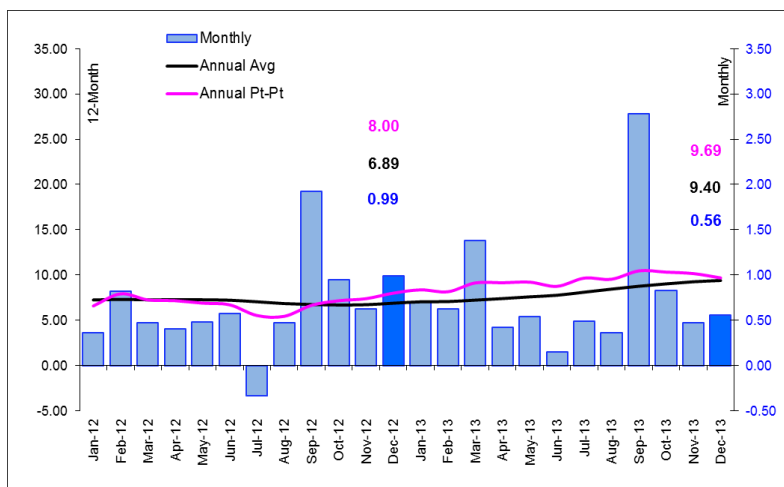


1.0 Review of Outturn

Headline inflation for December 2013 was **0.6 per cent**, which was below the average rate of **0.8 per cent** for December of the last five years. This outturn resulted in a calendar year inflation of **9.7 per cent**, relative to the **8.0 per cent** for 2012. The fiscal-year-to-date (FYTD) inflation was **6.8 per cent**, which was higher than the outturn of **6.2 per cent** for the corresponding period of 2012 (see **Figure 1**).

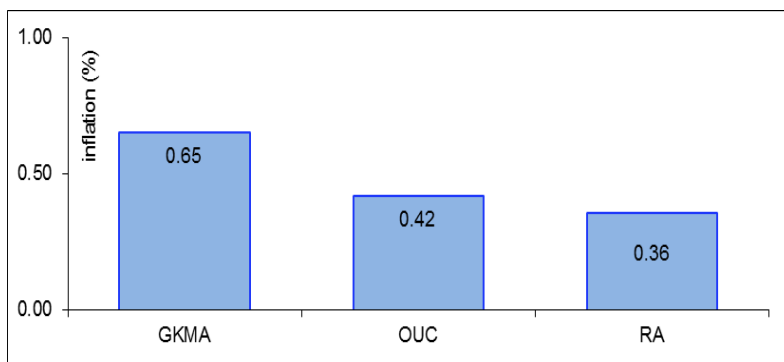
Inflation in December 2013 was below the seasonal average for that month.

Figure 1: Trend in monthly inflation



Among the three regions, the *Greater Kingston Metropolitan Area (GKMA)* recorded the highest inflation (see **Figure 2**). The higher inflation in GKMA was primarily due to greater price increases for both agriculture and processed food items as well as recreation and culture when compared to the other regions.

Figure 2: Regional Inflation





Inflation in December 2013 was primarily driven by higher prices within *Food & Non-Alcoholic Beverages* (FNB) and *Housing, Water, Electricity, Gas & Other Fuels* (HWEG). FNB accounted for **36.1 per cent** of the month's inflation and largely reflected increases in the costs of processed foods as well as some key vegetables. HWEG contributed approximately **17.7 per cent** of the month's inflation and primarily reflected higher electricity cost (see **Figure 3**).

Inflation in the month mainly reflected higher prices within FNB and HWEG

Figure 3: Inflation Contribution

	Actual		Share x 10
0.52		FNB	36.1
0.39		ABT	10.0
0.51		CF	3.1
0.75		HWEG	17.7
0.70		FHERM	6.4
0.21		HLTH	1.3
0.50		TRAN	11.8
0.00		COM	0.0
0.26		R&C	1.6
0.00		ED	0.0
0.73		R&A	8.4
0.81		MIS	12.6

Blue bars = positive and Red bars = negative

MIS= Miscellaneous Goods & Services, R&A=Restaurants & Accommodation, ED=Education, R&C=Recreation & Culture, COM=Communication, TRAN=Transport, HLTH=Health, FHERM=Furniture, Household Equipment & Routine Household Maintenance, HWEG=Housing, Water, Electricity, Gas & Other Fuels, C&F=Clothing & Footwear, ABT=Alcohol, Beverages & Tobacco, FNB=Food & Non-Alcoholic Beverages

Source: STATIN



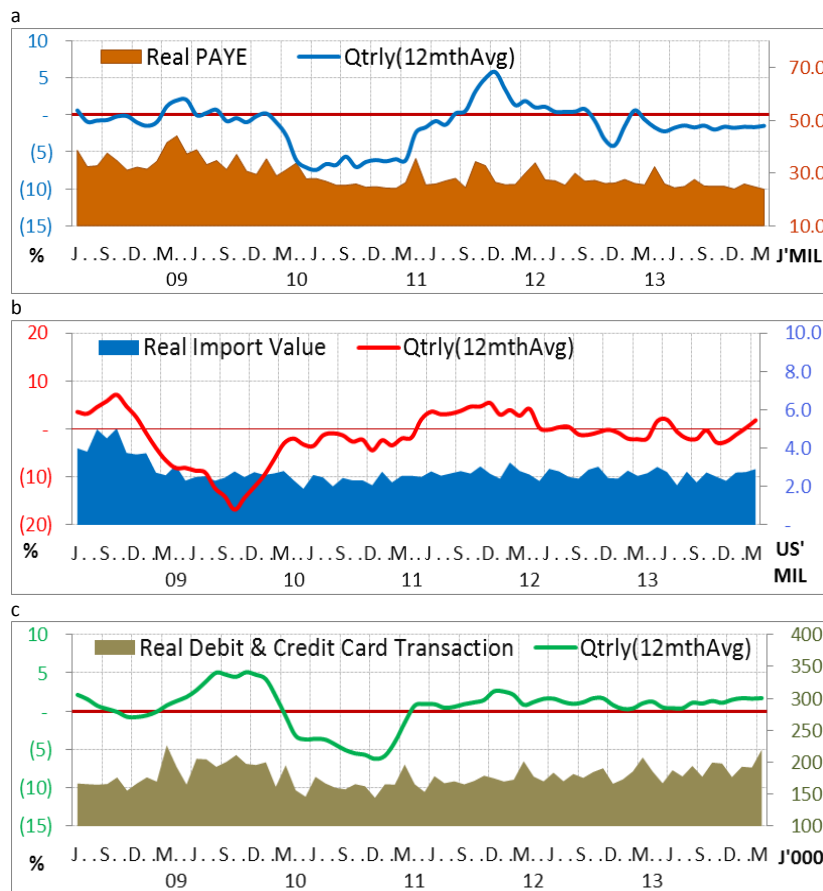
2.0 Factors underpinning the revised forecast

2.1 Trends in demand

There were improvements in two of the three primary indicators of domestic demand monitored by the BOJ in December. For the three months ended December 2013, the 12-month average real value of debit & credit card transactions and the real annual value of imports increased by **1.7 per cent** and **1.9 per cent**, respectively, relative to the previous three months. In contrast, real PAYE receipts declined by **1.5 per cent** over the same period (see **Figure 4**).

Two of the three indicators of domestic demand monitored by the BOJ increased.

Figure 4: Short-term Indicators of Demand





2.2 Trends in supply

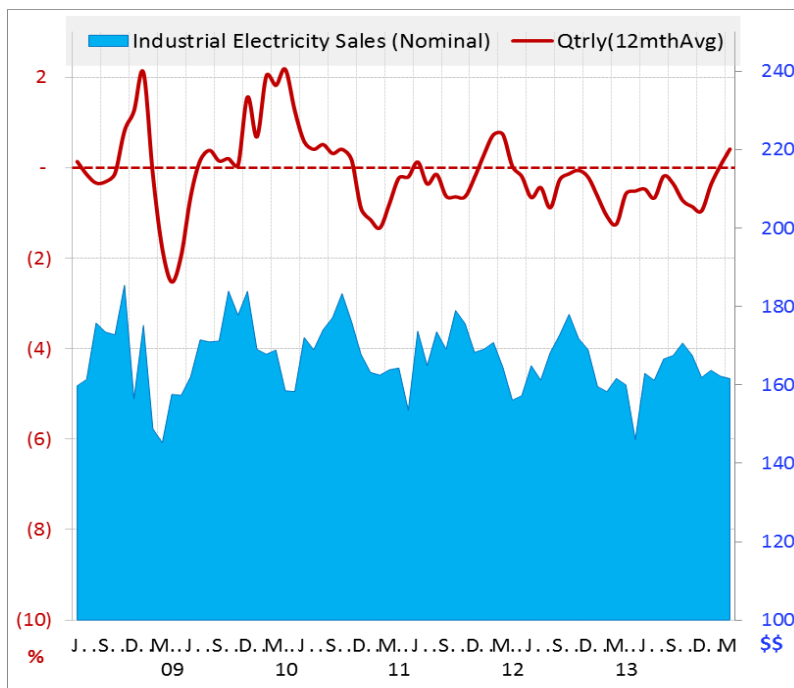
Data from the Rural Agricultural Development Authority (RADA) for December 2013 reflected moderate increases in the supplies of key vegetables and starchy foods. Despite the mild expansion in supplies, the prices of these items increased during the month.

For January 2014, the estimates from RADA reflected a moderation in supplies for key starchy foods while key vegetable items reflected mixed movements in supplies. Consistent with the moderation in supplies among starchy foods, the prices of these items are estimated to have increased during the month.

The 12-month average trend in industrial electricity sales, which is used as a proxy for industrial production, increased in December 2013 (see **Figure 5**). This was the second consecutive month of increase in the indicator since the brief expansion during 2012.

For January 2014, agriculture commodity prices are expected to increase.

Figure 5: Industrial Electricity Sales



The indicator of industrial productivity increased in December 2013.



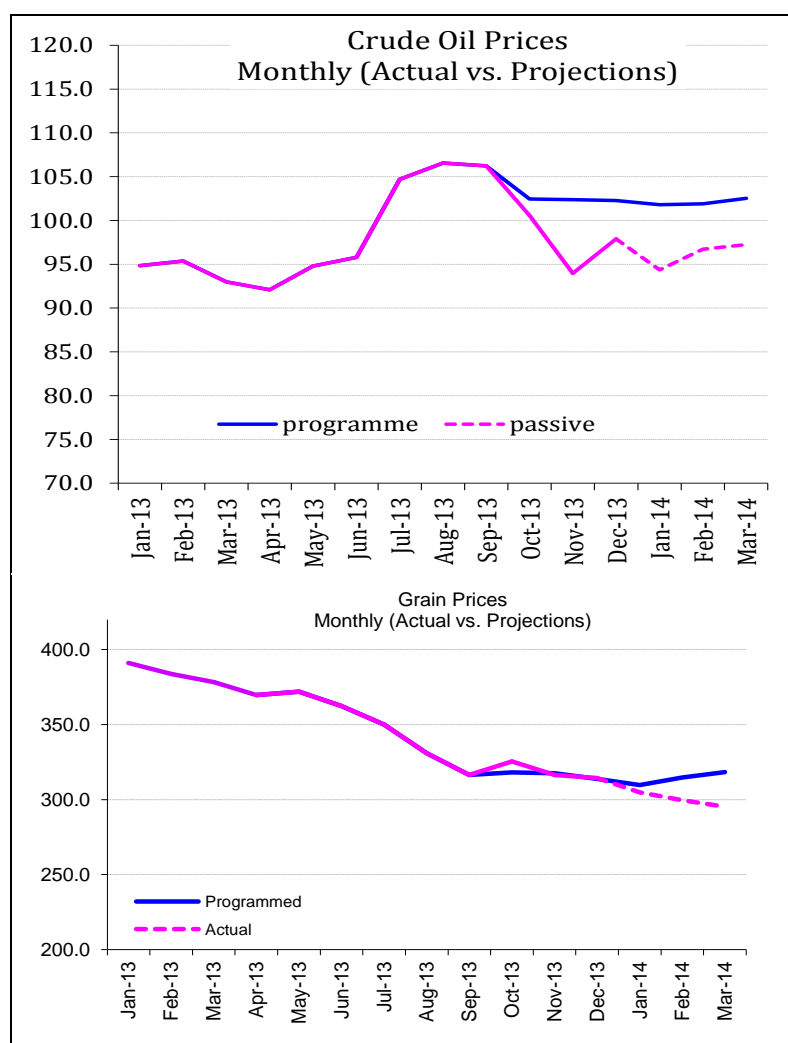
2.3 Import prices

The average price for crude oil, as measured by the West Texas Intermediate (WTI), was **US\$97.91 per barrel (bbl)** at end-December 2013, an increase of **4.2 per cent** relative to end-November 2013 (see **Figure 6**). The increase in crude oil prices mainly reflected the impact of a reduction in inventory levels in the USA as well as disruption of production in Libya.

For January 2014, the average price of crude oil declined by **3.1 per cent** to an average of **US\$94.87 per barrel**. The fall in oil price occurred in the context of concerns regarding a tapering of the quantitative easing programme by the Federal Reserve Bank of the USA.

Oil prices declined in January 2014.

Figure 6: International Commodity Price





In December 2013, the Bank's grains price index declined by **0.7 per cent** relative to November 2013 (see **Figure 6**). The fall in the index reflected declines of **0.9 per cent** and **3.9 per cent** in the prices of corn and wheat, respectively, the impact of which was partially offset by an increase of **3.0 per cent** in the price of rice.¹

For January 2014, the grains price index is estimated to have declined by **3.0 per cent**, underpinned by reductions in the prices of corn and wheat. However, the impact of these declines was partially offset by an increase in the price of rice.

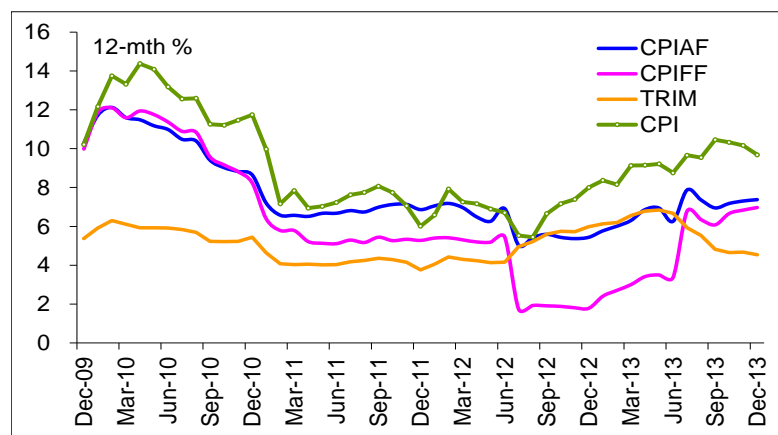
2.4 Trends in Core Inflation

For December 2013, all three core measures increased relative to the previous month. Specifically, CPI without Food and Fuel (CPI-FF), CPI without Agriculture and Fuel (CPI-AF) and the Trimmed Mean inflation (TRIM) increased by **0.4 per cent**, **0.5 per cent** and **0.3 per cent**, respectively. These movements followed increases of **0.5 per cent**, **0.6 per cent** and **0.4 per cent** in CPI-FF, CPI-AF and TRIM, respectively, in the previous month.

At end-December 2013, the annual point-to-point measure for the CPI-FF, CPI-AF and TRIM were **7.0 per cent**, **7.4 per cent** and **4.5 per cent**, respectively. These estimates compare to respective measures of **1.8 per cent**, **5.4 per cent** and **6.0 per cent** as at December 2012 (see **Figure 7**).

All three core measures reflected declines in December relative to the previous month.

Figure 7: Core Inflation (12-month change)



¹ The Bank's grain index is comprised of wheat (50%), rice (30%) and corn (20%).



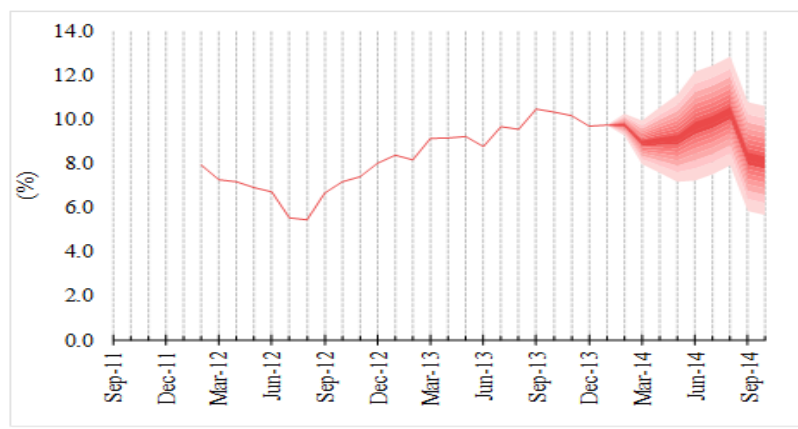
3.0 Revised Forecast

The Bank’s projection for inflation for FY2013/14 remains within the target range of **8.5 per cent to 10.5 per cent**. The overall risks to the forecast are perceived to be balanced (**Figure 8**). The main upside risks to the forecast is a stronger than expected pass-through of depreciation to prices. On the downside, the major risk factors are weaker than expected domestic demand conditions and a greater than anticipated pass-through of the reduction in international commodity prices.

Headline inflation for the March 2014 quarter is estimated to be within the range of **1.5 per cent to 2.5 per cent**.

Headline inflation for FY2013/14 is projected to fall within the target range of 8.5% to 10.5%.

Figure 8: Inflation Fan Chart



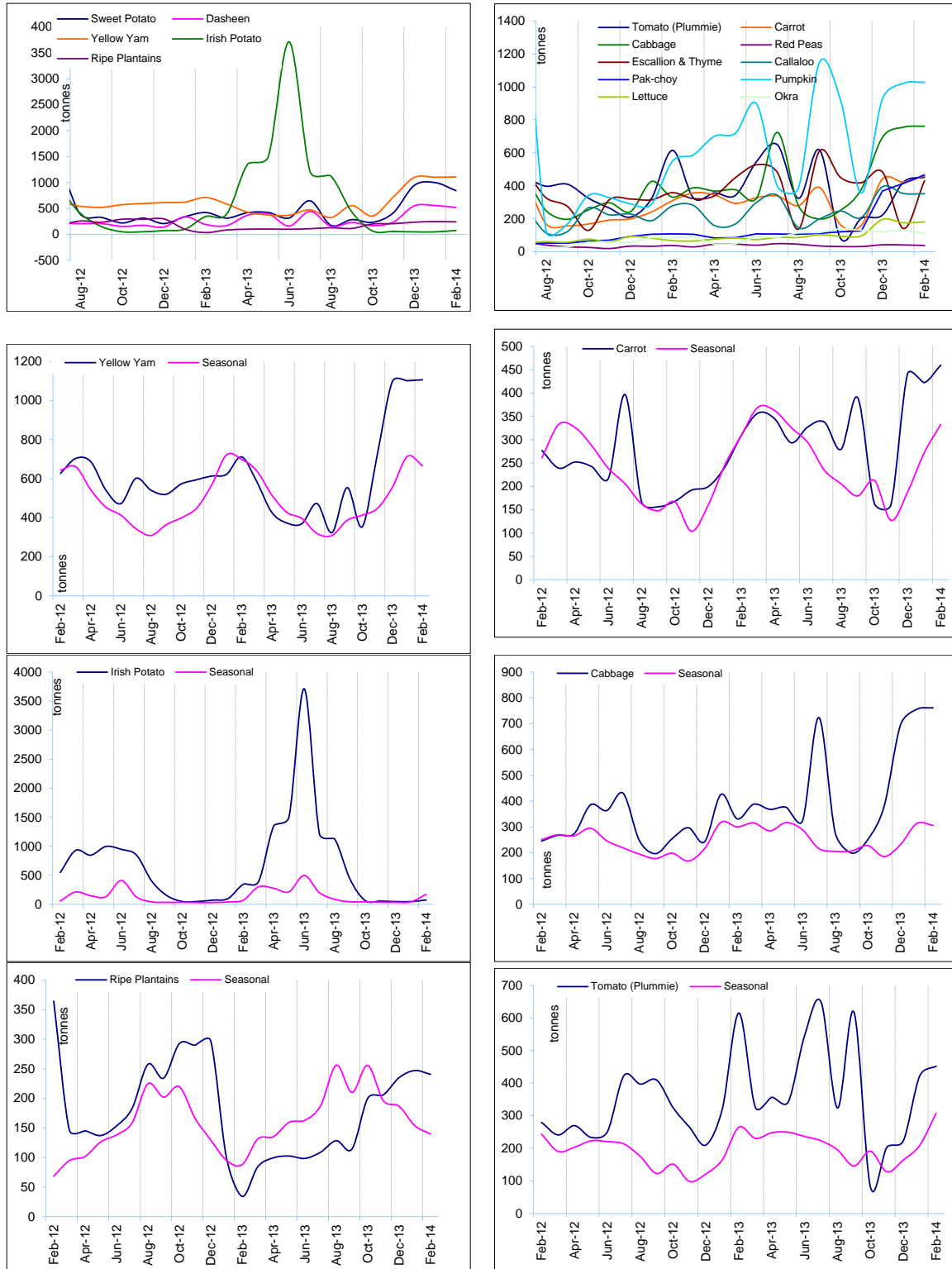


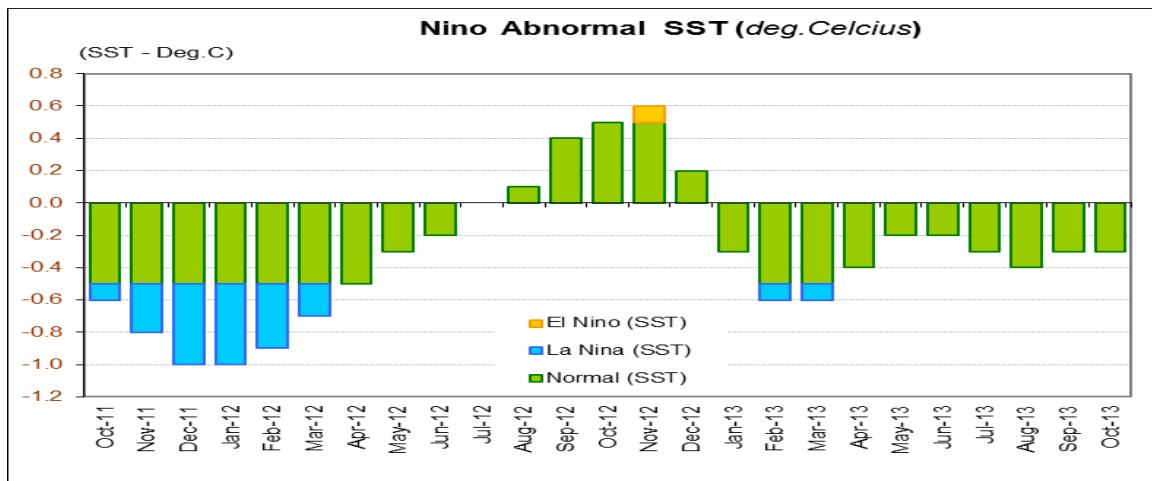
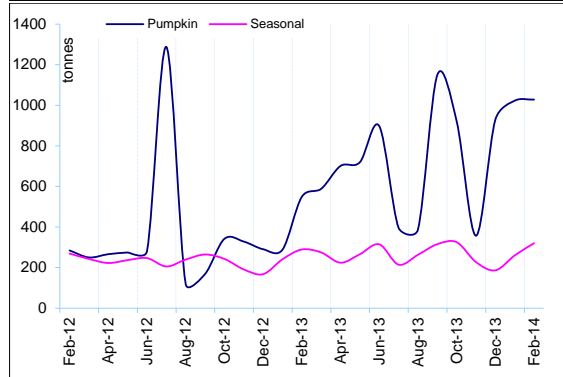
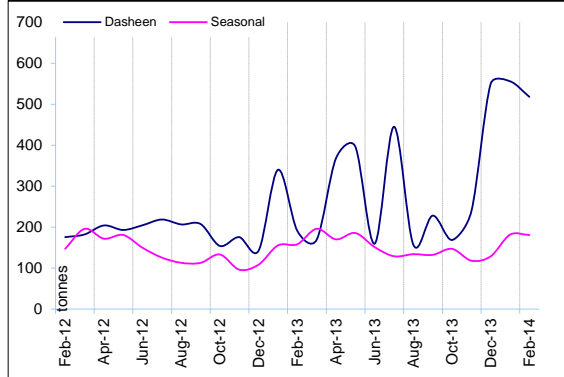
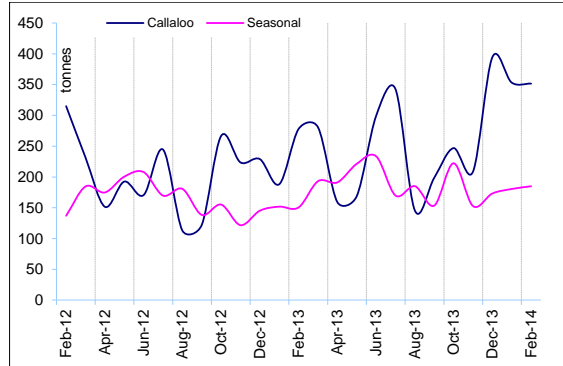
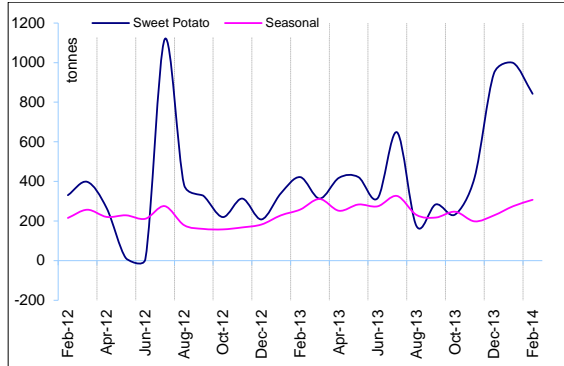
4.0 Summary and Conclusion

For December 2013, the inflation outturn was above the Bank's projection. The main component contributor to inflation in December was FNB, which primarily reflected increases in the cost of processed foods. However, the impact of these inflationary impulses is expected to be tempered by persistent weak domestic demand. In this regard, the Bank's projection continues to indicate that inflation for FY2013/14 will be in the target range of **8.5 per cent to 10.5 per cent**.

Appendices

Figure 9: Trends in selected agriculture production





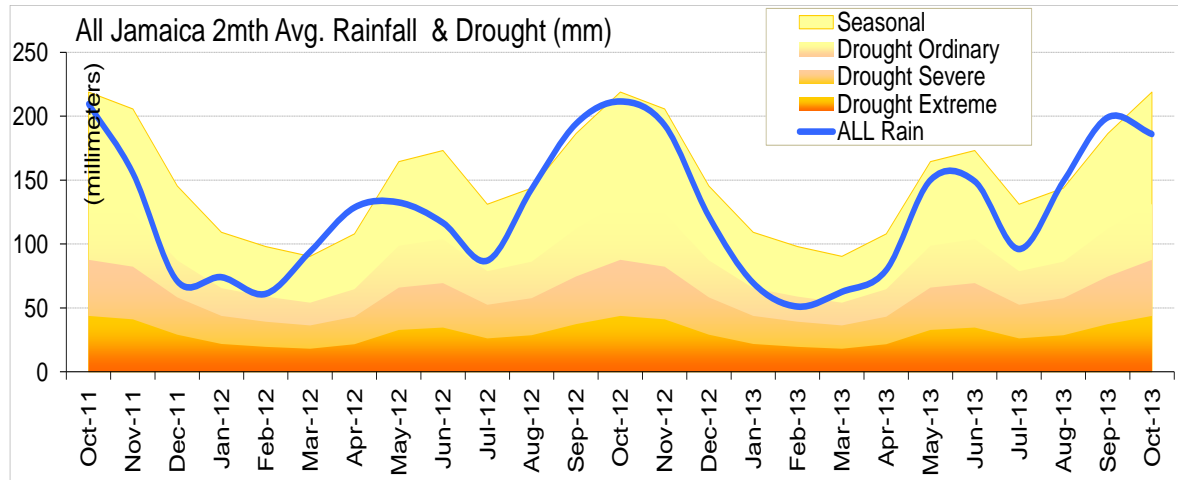


Table 1A
JAMAICA: HEADLINE INFLATION RATES
Dec. 2013

		1/ C.P.I	3 Month AVG. C.P.I	Monthly % change	3 mth* % change	3mth# % change	12 Month* % change	12 Month# % change	FYTD % change	CYTD % change
	Oct-10	164.03	162.94	0.78	1.69	1.47	11.21	22.20	4.73	9.04
	Nov-10	165.75	164.18	1.05	2.30	1.77	11.47	12.50	5.82	10.18
	Dec-10	168.11	165.96	1.42	3.28	2.43	11.74	12.62	7.33	11.74
2011	Jan-11	167.80	167.22	-0.18	2.30	2.63	9.97	12.42	7.14	-0.18
	Feb-11	167.08	167.66	-0.43	0.80	2.12	7.16	11.85	6.67	-0.61
	Mar-11	168.92	167.93	1.10	0.48	1.19	7.85	11.38	7.85	0.48
	Apr-11	169.74	168.58	0.49	1.16	0.81	6.94	10.75	0.49	0.97
	May-11	170.98	169.88	0.73	2.34	1.32	7.03	10.16	1.22	1.71
	Jun-11	172.28	171.00	0.76	1.99	1.83	7.23	9.67	1.99	2.48
	Jul-11	173.61	172.29	0.78	2.28	2.20	7.63	9.26	2.78	3.28
	Aug-11	174.57	173.49	0.55	2.10	2.12	7.75	8.87	3.35	3.84
	Sep-11	175.91	174.70	0.77	2.11	2.16	8.07	8.62	4.14	4.64
	Oct-11	176.73	175.74	0.47	1.80	2.00	7.74	8.34	4.63	5.13
	Nov-11	177.46	176.70	0.41	1.65	1.85	7.06	7.99	5.06	5.56
	Dec-11	178.21	177.47	0.42	1.31	1.58	6.01	7.52	5.50	6.01
2012	Jan-12	178.85	178.17	0.36	1.20	1.39	6.58	7.25	5.88	0.36
	Feb-12	180.32	179.13	0.82	1.61	1.37	7.93	7.31	6.75	1.19
	Mar-12	181.17	180.12	0.47	1.67	1.49	7.26	7.27	7.26	1.67
	Apr-12	181.90	181.13	0.40	1.71	1.66	7.16	7.28	0.40	2.08
	May-12	182.78	181.95	0.48	1.36	1.58	6.90	7.27	0.88	2.56
	Jun-12	183.83	182.84	0.58	1.47	1.51	6.71	7.23	1.47	3.16
	Jul-12	183.21	183.27	-0.34	0.72	1.18	5.53	7.05	1.12	2.81
	Aug-12	184.07	183.70	0.47	0.71	0.96	5.44	6.85	1.60	3.29
	Sep-12	187.61	184.97	1.93	2.06	1.16	6.65	6.74	3.55	5.28
	Oct-12	189.40	187.03	0.95	3.38	2.05	7.17	6.69	4.54	6.28
	Nov-12	190.57	189.20	0.62	3.53	2.99	7.39	6.72	5.19	6.94
	Dec-12	192.47	190.81	0.99	2.59	3.16	8.00	6.89	6.23	8.00
2013	Jan-13	193.82	192.29	0.70	2.34	2.81	8.37	7.04	6.98	0.70
	Feb-13	195.03	193.77	0.62	2.34	2.42	8.16	7.07	7.65	1.33
	Mar-13	197.72	195.52	1.38	2.73	2.47	9.13	7.23	9.13	2.73
	Apr-13	198.55	197.10	0.42	2.44	2.50	9.15	7.40	0.42	3.16
	May-13	199.62	198.63	0.54	2.36	2.51	9.22	7.60	0.97	3.72
	Jun-13	199.93	199.37	0.15	1.12	1.97	8.76	7.77	1.12	3.88
	Jul-13	200.91	200.16	0.49	1.19	1.55	9.66	8.11	1.62	4.39
	Aug-13	201.63	200.82	0.36	1.01	1.11	9.54	8.45	1.98	4.76
	Sep-13	207.24	203.26	2.78	3.66	1.95	10.46	8.76	4.82	7.67
	Oct-13	208.95	205.94	0.83	4.00	2.89	10.33	9.03	5.68	8.57
	Nov-13	209.94	208.71	0.47	4.12	3.93	10.16	9.26	6.18	9.08
	Dec-13	211.11	210.00	0.56	1.87	3.32	9.69	9.40	6.77	9.69

1/ December 2006 = 100

* Point to Point

Moving average

Source: STATIN

Table 1B
JAMAICA: CPI WITHOUT FOOD AND FUEL
Dec. 2013

		1/ CPI-FF	3 Month Avg.CPIFF	Monthly % change	3 mth* % change	3mth# % change	12 Month* % change	12 Month# % change	FYTD % change	CYTD % change
	Oct-10	265.60	264.02	0.67	1.92	1.55	9.16	20.56	3.77	7.49
	Nov-10	266.46	265.30	0.32	1.47	1.59	8.81	10.80	4.10	7.84
	Dec-10	267.47	266.51	0.38	1.37	1.59	8.24	10.64	4.50	8.24
2011	Jan-11	268.27	267.40	0.30	1.01	1.28	6.39	10.17	4.81	0.30
	Feb-11	269.36	268.37	0.40	1.08	1.15	5.79	9.63	5.23	0.70
	Mar-11	270.77	269.47	0.53	1.23	1.11	5.79	9.14	5.79	1.23
	Apr-11	271.78	270.64	0.37	1.31	1.21	5.22	8.57	0.37	1.61
	May-11	272.48	271.68	0.26	1.16	1.23	5.13	8.02	0.63	1.87
	Jun-11	273.52	272.59	0.38	1.02	1.16	5.11	7.51	1.02	2.26
	Jul-11	274.40	273.47	0.32	0.96	1.05	5.29	7.05	1.34	2.59
	Aug-11	276.19	274.70	0.65	1.36	1.11	5.17	6.59	2.00	3.26
	Sep-11	278.21	276.27	0.73	1.71	1.35	5.44	6.26	2.75	4.01
	Oct-11	279.59	278.00	0.50	1.89	1.66	5.27	5.94	3.26	4.53
	Nov-11	280.68	279.49	0.39	1.62	1.74	5.34	5.67	3.66	4.94
	Dec-11	281.59	280.62	0.32	1.22	1.58	5.28	5.43	4.00	5.28
2012	Jan-12	282.76	281.68	0.42	1.13	1.32	5.40	5.35	4.43	0.42
	Feb-12	283.93	282.76	0.42	1.16	1.17	5.41	5.32	4.86	0.83
	Mar-12	285.14	283.94	0.42	1.26	1.18	5.31	5.28	5.31	1.26
	Apr-12	285.91	284.99	0.27	1.11	1.18	5.20	5.28	0.27	1.53
	May-12	286.62	285.89	0.25	0.94	1.11	5.19	5.28	0.52	1.79
	Jun-12	288.44	286.99	0.64	1.16	1.07	5.46	5.31	1.16	2.43
	Jul-12	279.14	284.73	-3.22	-2.37	-0.09	1.73	5.01	-2.10	-0.87
	Aug-12	281.52	283.03	0.85	-1.78	-1.00	1.93	4.73	-1.27	-0.02
	Sep-12	283.52	281.39	0.71	-1.71	-1.95	1.91	4.43	-0.57	0.69
	Oct-12	284.85	283.30	0.47	2.05	-0.50	1.88	4.15	-0.10	1.16
	Nov-12	285.76	284.71	0.32	1.51	0.59	1.81	3.85	0.22	1.48
	Dec-12	286.62	285.74	0.30	1.09	1.55	1.79	3.56	0.52	1.79
2013	Jan-13	289.56	287.31	1.03	1.65	1.42	2.41	3.31	1.55	1.03
	Feb-13	291.62	289.26	0.71	2.05	1.60	2.71	3.09	2.27	1.74
	Mar-13	293.70	291.62	0.71	2.47	2.06	3.00	2.90	3.00	2.47
	Apr-13	295.67	293.66	0.67	2.11	2.21	3.41	2.76	0.67	3.16
	May-13	296.64	295.34	0.33	1.72	2.10	3.50	2.63	1.00	3.50
	Jun-13	298.15	296.82	0.51	1.52	1.78	3.36	2.46	1.52	4.02
	Jul-13	298.07	297.62	-0.03	0.81	1.35	6.78	2.88	1.49	3.99
	Aug-13	299.39	298.53	0.44	0.93	1.08	6.35	3.24	1.94	4.46
	Sep-13	300.75	299.40	0.46	0.87	0.87	6.08	3.59	2.40	4.93
	Oct-13	303.82	301.32	1.02	1.93	1.24	6.66	3.98	3.45	6.00
	Nov-13	305.30	303.29	0.49	1.98	1.59	6.84	4.40	3.95	6.52
	Dec-13	306.59	305.24	0.42	1.94	1.95	6.97	4.83	4.39	6.97

1/January 2000 = 100

* Point to Point

Moving average

Source: BOJ

Table 1C
JAMAICA: CPI WITHOUT AGRICULTURE AND FUEL
Dec. 2013

		1/ CPI-AF	3 Month Avg.CPIAF	Monthly % change	3 mth* % change	3mth# % change	12 Month* % change	12 Month# % change	FYTD % change	CYTD % change
	Oct-10	289.63	288.03	0.60	1.72	1.52	9.02	20.34	3.86	7.44
	Nov-10	291.22	289.58	0.55	1.63	1.58	8.82	10.60	4.43	8.03
	Dec-10	292.88	291.25	0.57	1.73	1.69	8.65	10.46	5.02	8.65
2011	Jan-11	294.12	292.74	0.42	1.55	1.64	7.20	10.07	5.47	0.42
	Feb-11	295.37	294.13	0.43	1.43	1.57	6.57	9.60	5.91	0.85
	Mar-11	297.20	295.56	0.62	1.47	1.48	6.57	9.18	6.57	1.47
	Apr-11	299.50	297.36	0.78	1.83	1.58	6.51	8.76	0.78	2.26
	May-11	301.26	299.32	0.59	1.99	1.77	6.67	8.39	1.37	2.86
	Jun-11	302.91	301.22	0.55	1.92	1.91	6.67	8.04	1.92	3.42
	Jul-11	304.14	302.77	0.41	1.55	1.82	6.81	7.74	2.34	3.84
	Aug-11	305.87	304.31	0.57	1.53	1.67	6.74	7.44	2.92	4.43
	Sep-11	308.01	306.01	0.70	1.69	1.59	6.99	7.25	3.64	5.17
	Oct-11	310.27	308.05	0.73	2.02	1.75	7.13	7.10	4.40	5.94
	Nov-11	311.99	310.09	0.55	2.00	1.90	7.13	6.97	4.98	6.52
	Dec-11	312.98	311.75	0.32	1.61	1.88	6.86	6.82	5.31	6.86
2012	Jan-12	314.87	313.28	0.60	1.48	1.70	7.06	6.81	5.95	0.60
	Feb-12	316.59	314.81	0.54	1.47	1.52	7.18	6.86	6.52	1.15
	Mar-12	317.91	316.46	0.42	1.57	1.51	6.97	6.90	6.97	1.57
	Apr-12	318.94	317.81	0.32	1.29	1.45	6.49	6.89	0.32	1.90
	May-12	320.12	318.99	0.37	1.12	1.33	6.26	6.86	0.70	2.28
	Jun-12	323.85	320.97	1.17	1.87	1.43	6.91	6.88	1.87	3.47
	Jul-12	319.42	321.13	-1.37	0.15	1.04	5.03	6.72	0.48	2.06
	Aug-12	322.46	321.91	0.95	0.73	0.92	5.42	6.61	1.43	3.03
	Sep-12	325.23	322.37	0.86	0.43	0.44	5.59	6.49	2.30	3.91
	Oct-12	327.13	324.94	0.58	2.41	1.19	5.43	6.35	2.90	4.52
	Nov-12	328.75	327.04	0.49	1.95	1.59	5.37	6.20	3.41	5.04
	Dec-12	330.01	328.63	0.38	1.47	1.94	5.44	6.08	3.81	5.44
2013	Jan-13	333.05	330.60	0.92	1.81	1.74	5.77	5.98	4.76	0.92
	Feb-13	335.61	332.89	0.77	2.09	1.79	6.01	5.88	5.57	1.70
	Mar-13	337.95	335.53	0.70	2.41	2.10	6.30	5.83	6.30	2.41
	Apr-13	340.82	338.12	0.85	2.33	2.28	6.86	5.87	0.85	3.27
	May-13	342.35	340.37	0.45	2.01	2.25	6.94	5.93	1.30	3.74
	Jun-13	344.12	342.43	0.52	1.83	2.05	6.26	5.88	1.83	4.28
	Jul-13	344.57	343.68	0.13	1.10	1.64	7.87	6.12	1.96	4.41
	Aug-13	346.19	344.96	0.47	1.12	1.35	7.36	6.28	2.44	4.90
	Sep-13	347.84	346.20	0.48	1.08	1.10	6.95	6.39	2.93	5.40
	Oct-13	350.62	348.21	0.80	1.76	1.32	7.18	6.53	3.75	6.24
	Nov-13	352.76	350.41	0.61	1.90	1.58	7.31	6.69	4.38	6.89
	Dec-13	354.35	352.58	0.45	1.87	1.84	7.38	6.85	4.85	7.38

1/January 2000 = 100

* Point to Point

Moving average

Source: BOJ

Table 2
Regional Inflation
Dec-MTH. 2013

		GKMA	OUC	RA
		Inflation(%)	Inflation(%)	Inflation(%)
01	FOOD & NON-ALCOHOLIC BEVERAGES	0.92	0.13	0.39
01.1	Food	0.93	0.09	0.39
	Bread and Cereals	0.43	0.11	0.17
	Meat	0.68	0.30	0.32
	Fish and Seafood	0.46	0.15	0.24
	Milk, Cheese and Eggs	0.93	0.28	0.86
	Oils and Fats	1.09	0.23	0.16
	Fruit	-0.96	0.21	3.33
	Vegetables and Starchy Foods	1.51	-0.28	0.14
	Vegetables	1.82	-0.08	0.34
	Starchy Foods	0.51	-0.78	-0.37
	Sugar, Jam, Honey, Chocolate and Confectionery	3.18	0.19	0.95
	Food Products n.e.c.	1.45	0.10	0.38
01.2	Non-Alcoholic Beverages	0.79	0.65	0.44
	Coffee, Tea and Cocoa	0.40	0.01	0.33
	Mineral Waters, Soft Drinks, Fruit and Vegetable Juices	0.94	0.87	0.50
02	ALCOHOLIC BEVERAGES & TOBACCO	0.25	0.18	0.56
03	CLOTHING & FOOTWEAR	0.36	0.96	0.44
03.1	Clothing	0.32	1.04	0.62
03.2	Footwear	0.41	0.82	0.16
04	HOUSING, WATER, ELECTRICITY, GAS & OTHER FUELS	0.51	0.69	1.03
04.1	Rentals for Housing	0.00	0.06	0.06
04.3	Maintenance and Repair of Dwelling	0.42	0.74	0.53
04.4	Water Supply and Miscellaneous Services Related to the Dwelling	-0.78	-0.78	-0.78
04.5	Electricity, Gas and Other Fuels	1.39	1.34	1.48
05	FURNISHINGS, HOUSEHOLD EQUIPMENT & ROUTINE HOUSEHOLD MAINTENAN	0.51	1.36	0.53
05.1	Furniture and Furnishings (inc. Floor Coverings)	1.22	1.29	1.42
05.2	Household Textiles	0.30	1.86	0.85
05.3	Household Appliances	0.16	0.42	0.56
05.4	Glassware, Tableware and Household Utensils	0.23	0.91	0.15
05.5	Tools and Equipment for House and Garden	3.84	0.34	0.37
05.6	Goods and Services for Routine Household Maintenance	0.38	1.52	0.27
06	HEALTH	0.07	0.62	0.14
06.1	Medical Products, Appliances and Equipment	0.05	1.46	0.37
06.2	Health Services	0.08	0.11	0.00
07	TRANSPORT	0.70	0.42	0.39
08	COMMUNICATION	0.00	0.00	0.00
09	RECREATION & CULTURE	0.15	0.41	0.27
10	EDUCATION	0.00	0.00	0.00
11	RESTAURANTS & ACCOMMODATION SERVICES	0.09	1.26	1.04
12	MISCELLANEOUS GOODS & SERVICES	0.83	0.80	0.80
ALL DIVISIONS		0.66	0.46	0.52

Table 2
Regional Inflation
Dec-QTR. 2013

		GKMA	OUC	RA
		Inflation(%)	Inflation(%)	Inflation(%)
01	FOOD & NON-ALCOHOLIC BEVERAGES	2.48	1.03	1.36
01.1	Food	2.48	0.93	1.34
	Bread and Cereals	0.93	0.74	2.43
	Meat	1.66	1.07	1.18
	Fish and Seafood	1.84	1.61	1.31
	Milk, Cheese and Eggs	3.29	2.40	2.57
	Oils and Fats	1.98	1.10	1.28
	Fruit	2.30	1.70	3.77
	Vegetables and Starchy Foods	3.54	-0.69	-0.48
	Vegetables	4.64	-0.23	0.73
	Starchy Foods	0.10	-1.83	-3.45
	Sugar, Jam, Honey, Chocolate and Confectionery	5.99	2.50	1.28
	Food Products n.e.c.	2.33	1.49	1.53
01.2	Non-Alcoholic Beverages	2.45	2.62	1.69
	Coffee, Tea and Cocoa	1.78	2.87	1.63
	Mineral Waters, Soft Drinks, Fruit and Vegetable Juices	2.70	2.53	1.72
02	ALCOHOLIC BEVERAGES & TOBACCO	4.56	1.81	1.73
03	CLOTHING & FOOTWEAR	0.70	1.72	1.77
03.1	Clothing	0.81	2.09	2.75
03.2	Footwear	0.55	0.99	0.28
04	HOUSING, WATER, ELECTRICITY, GAS & OTHER FUELS	4.58	5.32	4.96
04.1	Rentals for Housing	0.30	0.15	0.15
04.3	Maintenance and Repair of Dwelling	1.50	5.21	1.89
04.4	Water Supply and Miscellaneous Services Related to the Dwelling	21.40	21.39	21.41
04.5	Electricity, Gas and Other Fuels	4.13	4.33	4.19
05	FURNISHINGS, HOUSEHOLD EQUIPMENT & ROUTINE HOUSEHOLD MAINTENAN	1.77	2.73	1.55
05.1	Furniture and Furnishings (inc. Floor Coverings)	2.60	2.39	2.32
05.2	Household Textiles	0.50	2.48	1.00
05.3	Household Appliances	1.69	1.28	1.41
05.4	Glassware, Tableware and Household Utensils	1.74	1.78	1.05
05.5	Tools and Equipment for House and Garden	5.40	1.83	1.96
05.6	Goods and Services for Routine Household Maintenance	1.64	3.13	1.40
06	HEALTH	0.20	1.31	1.16
06.1	Medical Products, Appliances and Equipment	0.37	2.15	2.36
06.2	Health Services	0.08	0.80	0.44
07	TRANSPORT	-0.10	-0.09	-0.12
08	COMMUNICATION	-0.72	-0.62	-0.42
09	RECREATION & CULTURE	0.87	1.01	0.68
10	EDUCATION	0.21	0.26	0.53
11	RESTAURANTS & ACCOMMODATION SERVICES	1.01	1.98	1.51
12	MISCELLANEOUS GOODS & SERVICES	2.12	2.96	2.65
ALL DIVISIONS		2.16	1.83	1.66

Table 3A
Component Contribution to Inflation
Dec. 2013

		Weight in	Monthly	Weighted	% Contrib'n
		the CPI	Inflation(%)	Inflation	to Inflation
01	FOOD & NON-ALCOHOLIC BEVERAGES	37.45	0.52	0.19	36.06
01.1	Food	35.10	0.52	0.18	33.51
	Bread and Cereals	6.10	0.23	0.01	2.58
	Meat	7.66	0.44	0.03	6.28
	Fish and Seafood	5.33	0.29	0.02	2.87
	Milk, Cheese and Eggs	3.11	0.76	0.02	4.40
	Oils and Fats	1.64	0.45	0.01	1.36
	Fruit	1.14	0.40	0.00	0.84
	Vegetables and Starchy Foods	6.85	0.64	0.04	8.07
	Vegetables	4.64	0.94	0.04	8.12
	Starchy Foods	2.21	-0.14	0.00	-0.59
	Sugar, Jam, Honey, Chocolate and Confectionery	1.72	1.44	0.02	4.60
	Food Products n.e.c.	1.55	0.69	0.01	1.97
01.2	Non-Alcoholic Beverages	2.35	0.60	0.01	2.60
	Coffee, Tea and Cocoa	0.66	0.28	0.00	0.35
	Mineral Waters, Soft Drinks, Fruit and Vegetable Juices	1.69	0.73	0.01	2.29
02	ALCOHOLIC BEVERAGES & TOBACCO	1.38	0.39	0.01	1.01
03	CLOTHING & FOOTWEAR	3.33	0.51	0.02	3.15
03.1	Clothing	2.12	0.61	0.01	2.41
03.2	Footwear	1.22	0.35	0.00	0.79
04	HOUSING, WATER, ELECTRICITY, GAS & OTHER FUELS	12.76	0.75	0.10	17.70
04.1	Rentals for Housing	3.52	0.02	0.00	0.15
04.3	Maintenance and Repair of Dwelling	0.80	0.55	0.00	0.81
04.4	Water Supply and Miscellaneous Services Related to the Dwelling	1.32	-0.78	-0.01	-1.90
04.5	Electricity, Gas and Other Fuels	7.12	1.42	0.10	18.74
05	FURNISHINGS, HOUSEHOLD EQUIPMENT & ROUTINE HOUSEHOLD MAINT	4.93	0.70	0.03	6.40
05.1	Furniture and Furnishings (inc. Floor Coverings)	0.69	1.33	0.01	1.70
05.2	Household Textiles	0.32	0.93	0.00	0.55
05.3	Household Appliances	0.56	0.38	0.00	0.40
05.4	Glassware, Tableware and Household Utensils	0.05	0.30	0.00	0.03
05.5	Tools and Equipment for House and Garden	0.15	0.81	0.00	0.22
05.6	Goods and Services for Routine Household Maintenance	3.16	0.59	0.02	3.43
06	HEALTH	3.29	0.21	0.01	1.29
06.1	Medical Products, Appliances and Equipment	1.22	0.48	0.01	1.08
06.2	Health Services	2.07	0.04	0.00	0.17
07	TRANSPORT	12.82	0.50	0.06	11.79
08	COMMUNICATION	3.99	0.00	0.00	0.00
09	RECREATION & CULTURE	3.36	0.26	0.01	1.61
10	EDUCATION	2.14	0.00	0.00	0.00
11	RESTAURANTS & ACCOMMODATION SERVICES	6.19	0.73	0.05	8.41
12	MISCELLANEOUS GOODS & SERVICES	8.37	0.81	0.07	12.58
ALL DIVISIONS		100.00	0.56	0.54	100.00

Table 3B
Inflation Comparison
Dec-MTH. 2012 & 2013

		Weight in	2012	2013
		the CPI	MTH	MTH
01	FOOD & NON-ALCOHOLIC BEVERAGES	37.45	1.90	0.52
01.1	Food	35.10	1.95	0.52
	Bread and Cereals	6.10	0.38	0.23
	Meat	7.66	0.46	0.44
	Fish and Seafood	5.33	0.27	0.29
	Milk, Cheese and Eggs	3.11	0.69	0.76
	Oils and Fats	1.64	0.79	0.45
	Fruit	1.14	2.48	0.40
	Vegetables and Starchy Foods	6.85	7.07	0.64
	Vegetables	4.64	8.18	0.94
	Starchy Foods	2.21	4.84	-0.14
	Sugar, Jam, Honey, Chocolate and Confectionery	1.72	0.32	1.44
	Food Products n.e.c.	1.55	0.97	0.69
01.2	Non-Alcoholic Beverages	2.35	0.93	0.60
	Coffee, Tea and Cocoa	0.66	1.31	0.28
	Mineral Waters, Soft Drinks, Fruit and Vegetable Juices	1.69	0.76	0.73
02	ALCOHOLIC BEVERAGES & TOBACCO	1.38	0.50	0.39
03	CLOTHING & FOOTWEAR	3.33	0.80	0.51
03.1	Clothing	2.12	0.49	0.61
03.2	Footwear	1.22	1.27	0.35
04	HOUSING, WATER, ELECTRICITY, GAS & OTHER FUELS	12.76	0.27	0.75
04.1	Rentals for Housing	3.52	0.00	0.02
04.3	Maintenance and Repair of Dwelling	0.80	0.14	0.55
04.4	Water Supply and Miscellaneous Services Related to the Dwelling	1.32	0.74	-0.78
04.5	Electricity, Gas and Other Fuels	7.12	0.32	1.42
05	FURNISHINGS, HOUSEHOLD EQUIPMENT & ROUTINE HOUSEHOLD MAINTEN	4.93	0.54	0.70
05.1	Furniture and Furnishings (inc. Floor Coverings)	0.69	0.87	1.33
05.2	Household Textiles	0.32	0.33	0.93
05.3	Household Appliances	0.56	1.08	0.38
05.4	Glassware, Tableware and Household Utensils	0.05	0.44	0.30
05.5	Tools and Equipment for House and Garden	0.15	0.41	0.81
05.6	Goods and Services for Routine Household Maintenance	3.16	0.39	0.59
06	HEALTH	3.29	0.25	0.21
06.1	Medical Products, Appliances and Equipment	1.22	0.53	0.48
06.2	Health Services	2.07	0.08	0.04
07	TRANSPORT	12.82	0.07	0.50
08	COMMUNICATION	3.99	0.00	0.00
09	RECREATION & CULTURE	3.36	0.11	0.26
10	EDUCATION	2.14	0.00	0.00
11	RESTAURANTS & ACCOMMODATION SERVICES	6.19	0.30	0.73
12	MISCELLANEOUS GOODS & SERVICES	8.37	0.33	0.81
	ALL DIVISIONS	100.00	0.99	0.56

Table 4A
Component Contribution to Inflation
Dec-QTR. 2013

		Weight in the CPI	Quarterly Inflation(%)	Weighted Inflation	% Contrib'n Inflation
01	FOOD & NON-ALCOHOLIC BEVERAGES	37.45	1.68	0.63	35.78
01.1	Food	35.10	1.65	0.58	33.00
	Bread and Cereals	6.10	1.65	0.10	5.74
	Meat	7.66	1.33	0.10	5.81
	Fish and Seafood	5.33	1.53	0.08	4.65
	Milk, Cheese and Eggs	3.11	2.77	0.09	4.91
	Oils and Fats	1.64	1.44	0.02	1.35
	Fruit	1.14	2.54	0.03	1.65
	Vegetables and Starchy Foods	6.85	1.16	0.08	4.52
	Vegetables	4.64	2.33	0.11	6.17
	Starchy Foods	2.21	-1.86	-0.04	-2.34
	Sugar, Jam, Honey, Chocolate and Confectionery	1.72	2.83	0.05	2.77
	Food Products n.e.c.	1.55	1.80	0.03	1.58
01.2	Non-Alcoholic Beverages	2.35	2.14	0.05	2.87
	Coffee, Tea and Cocoa	0.66	1.92	0.01	0.72
	Mineral Waters, Soft Drinks, Fruit and Vegetable Juices	1.69	2.24	0.04	2.16
02	ALCOHOLIC BEVERAGES & TOBACCO	1.38	2.61	0.04	2.05
03	CLOTHING & FOOTWEAR	3.33	1.42	0.05	2.69
03.1	Clothing	2.12	2.02	0.04	2.44
03.2	Footwear	1.22	0.49	0.01	0.34
04	HOUSING, WATER, ELECTRICITY, GAS & OTHER FUELS	12.76	4.89	0.62	35.53
04.1	Rentals for Housing	3.52	0.24	0.01	0.48
04.3	Maintenance and Repair of Dwelling	0.80	2.53	0.02	1.15
04.4	Water Supply and Miscellaneous Services Related to the Dwelling	1.32	21.40	0.28	16.08
04.5	Electricity, Gas and Other Fuels	7.12	4.21	0.30	17.05
05	FURNISHINGS, HOUSEHOLD EQUIPMENT & ROUTINE HOUSEHOLD MAINT	4.93	1.88	0.09	5.28
05.1	Furniture and Furnishings (inc. Floor Coverings)	0.69	2.43	0.02	0.96
05.2	Household Textiles	0.32	1.22	0.00	0.22
05.3	Household Appliances	0.56	1.48	0.01	0.47
05.4	Glassware, Tableware and Household Utensils	0.05	1.42	0.00	0.04
05.5	Tools and Equipment for House and Garden	0.15	2.38	0.00	0.20
05.6	Goods and Services for Routine Household Maintenance	3.16	1.87	0.06	3.36
06	HEALTH	3.29	0.93	0.03	1.73
06.1	Medical Products, Appliances and Equipment	1.22	1.73	0.02	1.20
06.2	Health Services	2.07	0.42	0.01	0.49
07	TRANSPORT	12.82	-0.11	-0.01	-0.79
08	COMMUNICATION	3.99	-0.59	-0.02	-1.34
09	RECREATION & CULTURE	3.36	0.80	0.03	1.54
10	EDUCATION	2.14	0.34	0.01	0.41
11	RESTAURANTS & ACCOMMODATION SERVICES	6.19	1.43	0.09	5.03
12	MISCELLANEOUS GOODS & SERVICES	8.37	2.54	0.21	12.10
	ALL DIVISIONS	100.00	1.87	1.76	100.00

Table 4B
Inflation Comparison
Dec-QTR. 2012 & 2013

		Weight in	2012	2013
		the CPI	QTR	QTR
01	FOOD & NON-ALCOHOLIC BEVERAGES	37.45	4.27	1.68
01.1	Food	35.10	4.41	1.65
	Bread and Cereals	6.10	3.69	1.65
	Meat	7.66	1.48	1.33
	Fish and Seafood	5.33	1.27	1.53
	Milk, Cheese and Eggs	3.11	1.98	2.77
	Oils and Fats	1.64	2.42	1.44
	Fruit	1.14	4.10	2.54
	Vegetables and Starchy Foods	6.85	13.09	1.16
	Vegetables	4.64	15.10	2.33
	Starchy Foods	2.21	8.49	-1.86
	Sugar, Jam, Honey, Chocolate and Confectionery	1.72	0.82	2.83
	Food Products n.e.c.	1.55	1.88	1.80
01.2	Non-Alcoholic Beverages	2.35	1.85	2.14
	Coffee, Tea and Cocoa	0.66	2.61	1.92
	Mineral Waters, Soft Drinks, Fruit and Vegetable Juices	1.69	1.53	2.24
02	ALCOHOLIC BEVERAGES & TOBACCO	1.38	1.46	2.61
03	CLOTHING & FOOTWEAR	3.33	1.72	1.42
03.1	Clothing	2.12	1.82	2.02
03.2	Footwear	1.22	1.56	0.49
04	HOUSING, WATER, ELECTRICITY, GAS & OTHER FUELS	12.76	3.47	4.89
04.1	Rentals for Housing	3.52	0.00	0.24
04.3	Maintenance and Repair of Dwelling	0.80	0.39	2.53
04.4	Water Supply and Miscellaneous Services Related to the Dwelling	1.32	8.62	21.40
04.5	Electricity, Gas and Other Fuels	7.12	4.61	4.21
05	FURNISHINGS, HOUSEHOLD EQUIPMENT & ROUTINE HOUSEHOLD MAINTEN	4.93	1.23	1.88
05.1	Furniture and Furnishings (inc. Floor Coverings)	0.69	1.11	2.43
05.2	Household Textiles	0.32	1.07	1.22
05.3	Household Appliances	0.56	2.17	1.48
05.4	Glassware, Tableware and Household Utensils	0.05	1.21	1.42
05.5	Tools and Equipment for House and Garden	0.15	1.11	2.38
05.6	Goods and Services for Routine Household Maintenance	3.16	1.11	1.87
06	HEALTH	3.29	0.67	0.93
06.1	Medical Products, Appliances and Equipment	1.22	1.29	1.73
06.2	Health Services	2.07	0.29	0.42
07	TRANSPORT	12.82	-0.76	-0.11
08	COMMUNICATION	3.99	0.00	-0.59
09	RECREATION & CULTURE	3.36	0.94	0.80
10	EDUCATION	2.14	0.28	0.34
11	RESTAURANTS & ACCOMMODATION SERVICES	6.19	0.86	1.43
12	MISCELLANEOUS GOODS & SERVICES	8.37	1.20	2.54
ALL DIVISIONS		100.00	2.59	1.87

Table 5A
CYTD Component Contribution to Inflation
Jan-Dec. 2013

		Weight in the CPI	CYTD Inflation(%)	Weighted Inflation	% Contrib'n to Inflation
01	FOOD & NON-ALCOHOLIC BEVERAGES	37.45	7.9	2.97	31.15
01.1	Food	35.10	7.7	2.71	28.46
	Bread and Cereals	6.10	7.6	0.46	4.84
	Meat	7.66	7.1	0.54	5.71
	Fish and Seafood	5.33	4.4	0.24	2.48
	Milk, Cheese and Eggs	3.11	13.3	0.41	4.34
	Oils and Fats	1.64	11.4	0.19	1.97
	Fruit	1.14	20.3	0.23	2.44
	Vegetables and Starchy Foods	6.85	5.7	0.39	4.14
	Vegetables	4.64	5.6	0.26	2.72
	Starchy Foods	2.21	7.1	0.16	1.65
	Sugar, Jam, Honey, Chocolate and Confectionery	1.72	7.5	0.13	1.35
	Food Products n.e.c.	1.55	7.3	0.11	1.19
01.2	Non-Alcoholic Beverages	2.35	11.5	0.27	2.83
	Coffee, Tea and Cocoa	0.66	12.6	0.08	0.87
	Mineral Waters, Soft Drinks, Fruit and Vegetable Juices	1.69	11.0	0.19	1.96
02	ALCOHOLIC BEVERAGES & TOBACCO	1.38	11.0	0.15	1.60
03	CLOTHING & FOOTWEAR	3.33	9.2	0.31	3.22
03.1	Clothing	2.12	9.9	0.21	2.21
03.2	Footwear	1.22	8.1	0.10	1.04
04	HOUSING, WATER, ELECTRICITY, GAS & OTHER FUELS	12.76	11.5	1.47	15.46
04.1	Rentals for Housing	3.52	1.2	0.04	0.43
04.3	Maintenance and Repair of Dwelling	0.80	14.4	0.11	1.21
04.4	Water Supply and Miscellaneous Services Related to the Dwelling	1.32	28.7	0.38	3.98
04.5	Electricity, Gas and Other Fuels	7.12	13.1	0.93	9.78
05	FURNISHINGS, HOUSEHOLD EQUIPMENT & ROUTINE HOUSEHOLD MAINT	4.93	7.3	0.36	3.76
05.1	Furniture and Furnishings (inc. Floor Coverings)	0.69	8.3	0.06	0.60
05.2	Household Textiles	0.32	6.6	0.02	0.22
05.3	Household Appliances	0.56	8.4	0.05	0.49
05.4	Glassware, Tableware and Household Utensils	0.05	7.6	0.00	0.04
05.5	Tools and Equipment for House and Garden	0.15	10.0	0.01	0.16
05.6	Goods and Services for Routine Household Maintenance	3.16	6.8	0.21	2.24
06	HEALTH	3.29	5.9	0.19	2.04
06.1	Medical Products, Appliances and Equipment	1.22	6.7	0.08	0.86
06.2	Health Services	2.07	5.4	0.11	1.18
07	TRANSPORT	12.82	20.4	2.62	27.49
08	COMMUNICATION	3.99	-4.2	-0.17	-1.77
09	RECREATION & CULTURE	3.36	5.9	0.20	2.07
10	EDUCATION	2.14	4.0	0.09	0.89
11	RESTAURANTS & ACCOMMODATION SERVICES	6.19	7.8	0.48	5.07
12	MISCELLANEOUS GOODS & SERVICES	8.37	10.3	0.86	9.02
	ALL DIVISIONS	100.00	9.7	9.52	100.00

Table 5B
CYTD Inflation Comparison
Jan-Dec. 2012 & 2013

		Weight in	2012	2013
		the CPI	CYTD	CYTD
01	FOOD & NON-ALCOHOLIC BEVERAGES	37.45	14.33	7.92
01.1	Food	35.10	14.68	7.72
	Bread and Cereals	6.10	8.21	7.56
	Meat	7.66	11.69	7.10
	Fish and Seafood	5.33	12.87	4.43
	Milk, Cheese and Eggs	3.11	15.83	13.29
	Oils and Fats	1.64	9.35	11.41
	Fruit	1.14	17.97	20.34
	Vegetables and Starchy Foods	6.85	28.38	5.75
	Vegetables	4.64	32.55	5.59
	Starchy Foods	2.21	19.10	7.13
	Sugar, Jam, Honey, Chocolate and Confectionery	1.72	7.16	7.48
	Food Products n.e.c.	1.55	10.20	7.34
01.2	Non-Alcoholic Beverages	2.35	8.44	11.49
	Coffee, Tea and Cocoa	0.66	12.97	12.57
	Mineral Waters, Soft Drinks, Fruit and Vegetable Juices	1.69	6.60	11.02
02	ALCOHOLIC BEVERAGES & TOBACCO	1.38	6.13	11.01
03	CLOTHING & FOOTWEAR	3.33	11.64	9.22
03.1	Clothing	2.12	11.98	9.92
03.2	Footwear	1.22	11.13	8.15
04	HOUSING, WATER, ELECTRICITY, GAS & OTHER FUELS	12.76	5.28	11.54
04.1	Rentals for Housing	3.52	1.57	1.17
04.3	Maintenance and Repair of Dwelling	0.80	8.94	14.35
04.4	Water Supply and Miscellaneous Services Related to the Dwelling	1.32	6.64	28.70
04.5	Electricity, Gas and Other Fuels	7.12	6.56	13.07
05	FURNISHINGS, HOUSEHOLD EQUIPMENT & ROUTINE HOUSEHOLD MAINTEN	4.93	8.59	7.27
05.1	Furniture and Furnishings (inc. Floor Coverings)	0.69	9.51	8.29
05.2	Household Textiles	0.32	9.26	6.63
05.3	Household Appliances	0.56	11.09	8.40
05.4	Glassware, Tableware and Household Utensils	0.05	10.41	7.57
05.5	Tools and Equipment for House and Garden	0.15	4.41	9.95
05.6	Goods and Services for Routine Household Maintenance	3.16	8.03	6.76
06	HEALTH	3.29	3.12	5.91
06.1	Medical Products, Appliances and Equipment	1.22	4.33	6.68
06.2	Health Services	2.07	2.36	5.42
07	TRANSPORT	12.82	2.50	20.41
08	COMMUNICATION	3.99	-39.40	-4.23
09	RECREATION & CULTURE	3.36	6.62	5.85
10	EDUCATION	2.14	3.70	3.98
11	RESTAURANTS & ACCOMMODATION SERVICES	6.19	5.31	7.80
12	MISCELLANEOUS GOODS & SERVICES	8.37	6.01	10.26
ALL DIVISIONS		100.00	8.00	9.69

Table 6A
FYTD Component Contribution to Inflation
Apr-Dec. 2013

		Weight in	FYTD	Weighted	% Contrib'n
		the CPI	Inflation(%)	Inflation	to Inflation
01	FOOD & NON-ALCOHOLIC BEVERAGES	37.45	5.66	2.12	31.58
01.1	Food	35.10	5.64	1.98	29.46
	Bread and Cereals	6.10	5.61	0.34	5.09
	Meat	7.66	5.44	0.42	6.21
	Fish and Seafood	5.33	3.26	0.17	2.59
	Milk, Cheese and Eggs	3.11	9.18	0.29	4.25
	Oils and Fats	1.64	7.26	0.12	1.77
	Fruit	1.14	14.92	0.17	2.53
	Vegetables and Starchy Foods	6.85	4.59	0.31	4.68
	Vegetables	4.64	5.53	0.26	3.82
	Starchy Foods	2.21	3.05	0.07	1.00
	Sugar, Jam, Honey, Chocolate and Confectionery	1.72	4.30	0.07	1.10
	Food Products n.e.c.	1.55	4.85	0.08	1.12
01.2	Non-Alcoholic Beverages	2.35	6.13	0.14	2.15
	Coffee, Tea and Cocoa	0.66	6.33	0.04	0.62
	Mineral Waters, Soft Drinks, Fruit and Vegetable Juices	1.69	6.05	0.10	1.52
02	ALCOHOLIC BEVERAGES & TOBACCO	1.38	5.98	0.08	1.23
03	CLOTHING & FOOTWEAR	3.33	5.69	0.19	2.82
03.1	Clothing	2.12	6.08	0.13	1.92
03.2	Footwear	1.22	5.10	0.06	0.93
04	HOUSING, WATER, ELECTRICITY, GAS & OTHER FUELS	12.76	5.69	0.73	10.80
04.1	Rentals for Housing	3.52	0.65	0.02	0.34
04.3	Maintenance and Repair of Dwelling	0.80	5.65	0.05	0.67
04.4	Water Supply and Miscellaneous Services Related to the Dwelling	1.32	26.41	0.35	5.19
04.5	Electricity, Gas and Other Fuels	7.12	4.30	0.31	4.56
05	FURNISHINGS, HOUSEHOLD EQUIPMENT & ROUTINE HOUSEHOLD MAINT	4.93	4.70	0.23	3.45
05.1	Furniture and Furnishings (inc. Floor Coverings)	0.69	6.04	0.04	0.62
05.2	Household Textiles	0.32	3.24	0.01	0.15
05.3	Household Appliances	0.56	5.59	0.03	0.47
05.4	Glassware, Tableware and Household Utensils	0.05	3.91	0.00	0.03
05.5	Tools and Equipment for House and Garden	0.15	7.27	0.01	0.16
05.6	Goods and Services for Routine Household Maintenance	3.16	4.26	0.13	2.01
06	HEALTH	3.29	4.06	0.13	1.99
06.1	Medical Products, Appliances and Equipment	1.22	4.45	0.05	0.81
06.2	Health Services	2.07	3.81	0.08	1.17
07	TRANSPORT	12.82	18.70	2.40	35.70
08	COMMUNICATION	3.99	-4.29	-0.17	-2.55
09	RECREATION & CULTURE	3.36	4.29	0.14	2.15
10	EDUCATION	2.14	3.98	0.09	1.27
11	RESTAURANTS & ACCOMMODATION SERVICES	6.19	3.49	0.22	3.21
12	MISCELLANEOUS GOODS & SERVICES	8.37	6.70	0.56	8.35
	ALL DIVISIONS	100.00	6.77	6.72	100.00

Table 6B
FYTD Inflation Comparison
Apr-Dec. 2012 & 2013

		Weight in	2012	2013
		the CPI	FYTD	FYTD
01	FOOD & NON-ALCOHOLIC BEVERAGES	37.45	12.44	5.66
01.1	Food	35.10	12.82	5.64
	Bread and Cereals	6.10	7.11	5.61
	Meat	7.66	8.91	5.44
	Fish and Seafood	5.33	10.63	3.26
	Milk, Cheese and Eggs	3.11	13.87	9.18
	Oils and Fats	1.64	5.88	7.26
	Fruit	1.14	18.88	14.92
	Vegetables and Starchy Foods	6.85	27.45	4.59
	Vegetables	4.64	30.02	5.53
	Starchy Foods	2.21	22.02	3.05
	Sugar, Jam, Honey, Chocolate and Confectionery	1.72	5.20	4.30
	Food Products n.e.c.	1.55	7.52	4.85
01.2	Non-Alcoholic Beverages	2.35	6.00	6.13
	Coffee, Tea and Cocoa	0.66	8.89	6.33
	Mineral Waters, Soft Drinks, Fruit and Vegetable Juices	1.69	4.81	6.05
02	ALCOHOLIC BEVERAGES & TOBACCO	1.38	4.98	5.98
03	CLOTHING & FOOTWEAR	3.33	9.20	5.69
03.1	Clothing	2.12	9.53	6.08
03.2	Footwear	1.22	8.70	5.10
04	HOUSING, WATER, ELECTRICITY, GAS & OTHER FUELS	12.76	2.79	5.69
04.1	Rentals for Housing	3.52	0.55	0.65
04.3	Maintenance and Repair of Dwelling	0.80	4.99	5.65
04.4	Water Supply and Miscellaneous Services Related to the Dwelling	1.32	4.84	26.41
04.5	Electricity, Gas and Other Fuels	7.12	3.31	4.30
05	FURNISHINGS, HOUSEHOLD EQUIPMENT & ROUTINE HOUSEHOLD MAINTEN	4.93	7.32	4.70
05.1	Furniture and Furnishings (inc. Floor Coverings)	0.69	7.62	6.04
05.2	Household Textiles	0.32	7.82	3.24
05.3	Household Appliances	0.56	8.70	5.59
05.4	Glassware, Tableware and Household Utensils	0.05	8.18	3.91
05.5	Tools and Equipment for House and Garden	0.15	3.62	7.27
05.6	Goods and Services for Routine Household Maintenance	3.16	7.11	4.26
06	HEALTH	3.29	2.73	4.06
06.1	Medical Products, Appliances and Equipment	1.22	3.81	4.45
06.2	Health Services	2.07	2.06	3.81
07	TRANSPORT	12.82	0.74	18.70
08	COMMUNICATION	3.99	-39.40	-4.29
09	RECREATION & CULTURE	3.36	5.63	4.29
10	EDUCATION	2.14	3.70	3.98
11	RESTAURANTS & ACCOMMODATION SERVICES	6.19	4.29	3.49
12	MISCELLANEOUS GOODS & SERVICES	8.37	3.57	6.70
ALL DIVISIONS		100.00	6.23	6.77