



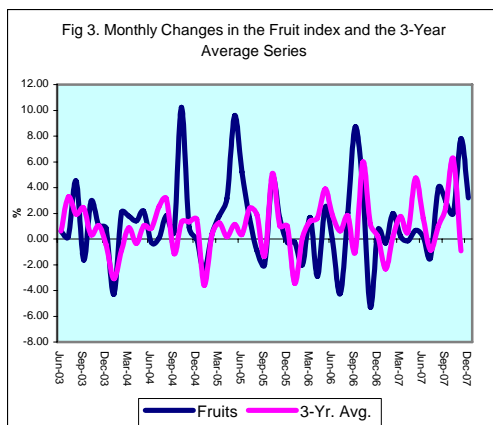
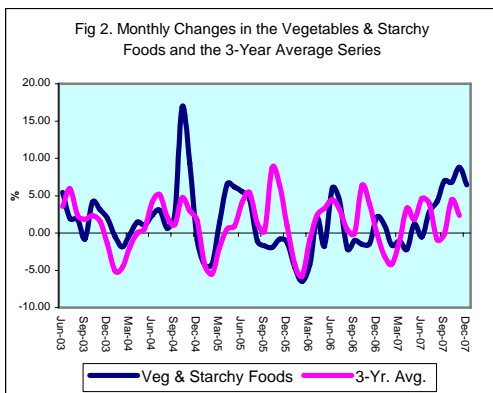
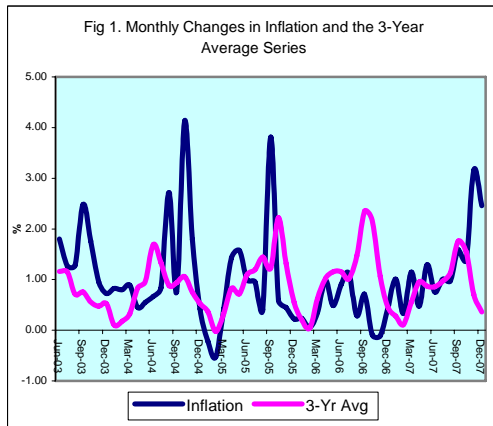
INFLATION REPORT

DECEMBER 2007



Contents

A.	NOTE: DECEMBER 2007	I
B.	APPENDIX:	
	TABLE 1A: Jamaica's Inflation Rates	1
	TABLE 1B: CPI without Agriculture and Fuel	2
	TABLE 2 : Contribution to Inflation	3
	TABLE 3: Regional Inflation	4
	TABLE 4: Core Inflation	5



Introduction

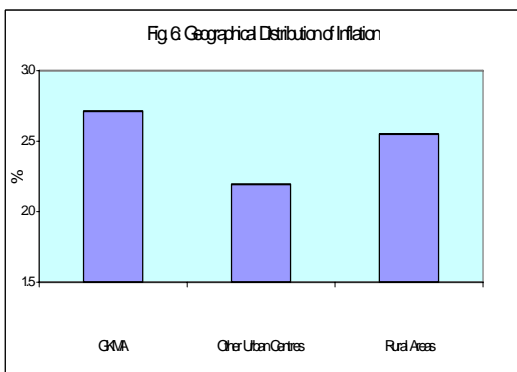
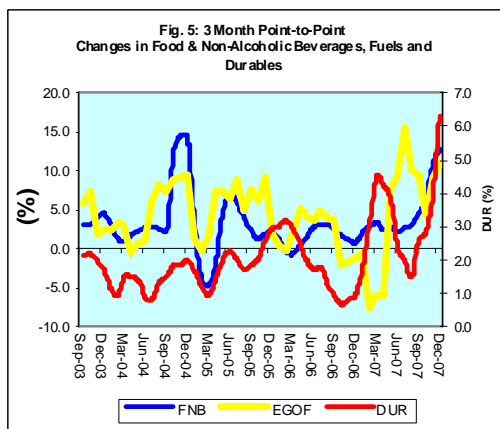
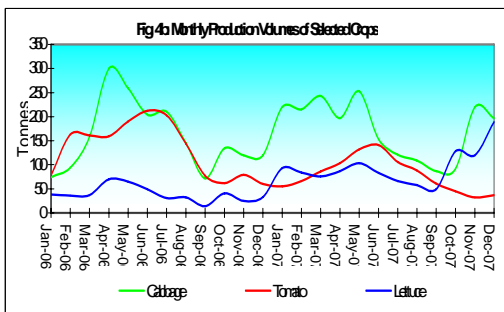
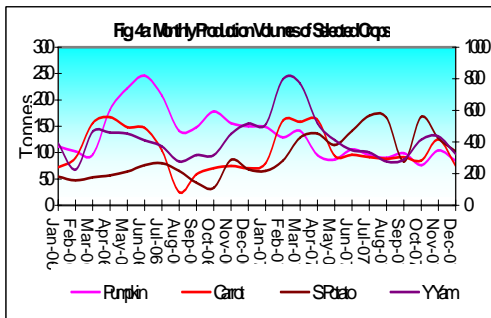
1.0 The All Jamaica Consumer Price Index (CPI) rose by 2.5 per cent in December 2007, below the increase of 3.2 per cent in the previous month but significantly above the 0.4 per cent recorded in December 2006. The outturn for the review month resulted in a calendar year inflation rate of 16.8 per cent, 11.3 percentage points above the outturn for 2006. The annual average inflation rate for 2007, was 9.2 per cent, relative to the 8.9 per cent rate for the corresponding period of 2006. For the fiscal year to date, inflation was 14.0 per cent, representing a sharp increase relative to the rate of 4.8 per cent one year ago.

2.0 The primary influences on December's inflation were similar to those that affected the outturn in November. These influences were agricultural supply shocks from adverse weather and the pass-through of higher international commodity prices, such as those of grains and crude oil. The disruption to agricultural commodity supplies from Hurricane Dean and prolonged rainfall in the subsequent weeks, continued to have adverse effects on produce prices. The cost of energy and meat prices reflected the impact of record crude oil and grain prices, respectively.

3.0 With the exception of *Communication*, which was unchanged, all the divisions in the CPI recorded increases during December. The strongest increases were recorded in *Food & Non-Alcoholic Beverages*, *Housing*, *Water*, *Electricity*, *Gas & Other Fuels* and *Transport*. *Food & Non-Alcoholic Beverages* and *Housing*, *Water*, *Electricity*, *Gas & Other Fuels* increased by 3.5 per cent and 3.2 per cent, respectively, while *Transport* rose by 1.7 per cent. These divisions together accounted for approximately 79.6 per cent of the overall inflation outturn. The highest nominal price movements were observed in *Clothing & Footwear*, a likely response to heightened demand in the Christmas season.

Main Developments in the Basket

4.0 The expansion in *Food & Non-Alcoholic Beverages* was chiefly influenced by the increases in *Vegetables & Starchy Foods*, *Meat* and *Bread & Cereals*. *Vegetables & Starchy Foods* reflected the residual shocks to agricultural prices from the disruptions wrought by adverse weather in the previous and current quarters. Sharp increases were recorded for items such as escallion, sweet peppers, pak choy, lettuce and plantains.



Rising international prices for corn, wheat and other grains continued to affect the prices of meat, bread and cereals. Meat and baked products prices were doubly impacted by the rising cost of energy that influenced processing or production costs.

5.0 The increase of 3.2 per cent in *Housing, Water, Electricity, Gas & Other Fuels* resulted chiefly from an increase of 5.6 per cent in *Electricity, Gas and Other Fuels*. This primarily arose from an increase of 5.8 per cent in the cost of household electricity, which emanated principally from a 9.6 per cent increase in the fuel charge, to J\$13.205 per KWh, the highest on record.

6.0 The increase of 1.7 per cent in the *Transport* division emanated mainly from the higher cost of private transportation. The main items contributing to the increase were higher costs for automotive batteries and fuel.

7.0 Also of importance in the month was the movement in *Clothing & Footwear*, which increased by 4.2 per cent. This mainly reflected the impact of increases in the cost of footwear. The *Footwear* index increased by 8.6 per cent and contributed approximately 75.0 per cent of the impetus to the division.

8.0 The CPI in the Greater Kingston Metropolitan Area (GKMA) and Rural Areas increased by 2.7 per cent and 2.6 per cent respectively, while the change in the Other Urban Centres was 2.2 per cent. This disparity was mainly reflected in *Food & Non-Alcoholic Beverages* and *Clothing & Footwear*. The index of *Food & Non-Alcoholic Beverages* rose by 4.4 per cent and 3.1 per cent in GKMA and Rural Areas, respectively, but moved by 3.0 per cent in the Other Urban Centres. This pattern was mostly evident in *Vegetables & Starchy Foods* where there were respective increases of 7.4 per cent, 5.0 per cent and 6.4 per cent in the GKMA, OUC and Rural Areas. Within *Clothing & Footwear*, sharp increases in *Footwear* of 11.8 per cent and 9.6 per cent were observed in the GKMA and the Rural Areas, while a 2.1 per cent increase was seen in the OUC.

Core Inflation

Other Measures of Underlying Inflation

CPI-AF

9.0 The measure of underlying inflation that excludes agricultural and energy prices (CPI-AF) increased by **1.8 per cent in December 2007**, 1.0 percentage point below the change in the previous month (Table 1B). The outturn brought the fiscal year-to-date CPI-AF inflation to 11.2 per cent which was above the estimate for the comparable period of the previous fiscal year. For the calendar year, the underlying inflation rate of 15.6 per cent was above the 8.1 per cent attained last year.

Trimmed Mean

10.0 The trimmed mean index increased by **1.5 per cent in December 2007**, 0.3 percentage point below the change in the previous month (Table 1E). The outturn brought the fiscal year-to-date trimmed mean inflation to 7.3 per cent which was above the estimate for the comparable period of the previous fiscal year. For the calendar year, the point-to-point and annual average core inflation rates of 9.4 per cent and 5.6 per cent for the month were 5.6 percentage points and 1.3 percentage points above the comparable measures in 2006.

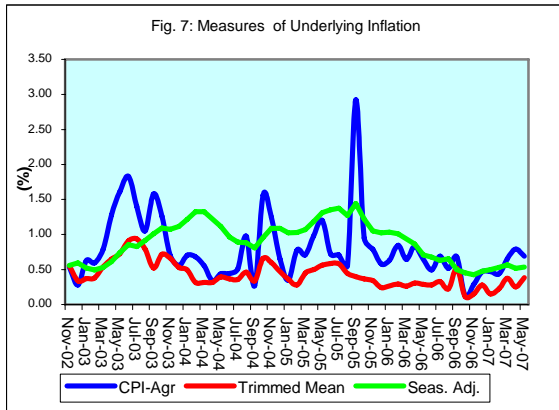


Table 1A
JAMAICA: HEADLINE INFLATION RATES

	1/ C.P.I	3 Month AVG. C.P.I	Monthly % change	3 mth* % change	3mth# % change	12 Month* % change	12 Month# % change	FYTD % change	CYTD % change	
2004	Jan	74.7	74.1	0.8	2.5	3.7	14.9	10.7	14.5	0.8
	Feb	75.3	74.7	0.8	2.4	2.8	16.0	11.5	15.4	1.6
	Mar	75.9	75.3	0.9	2.5	2.5	16.4	12.3	16.4	2.5
	Apr	76.3	75.8	0.5	2.2	2.4	15.6	13.0	0.5	3.0
	May	76.7	76.3	0.6	1.9	2.2	14.7	13.5	1.0	3.6
	Jun	77.2	76.7	0.7	1.7	1.9	13.4	13.8	1.7	4.3
	Jul	77.9	77.3	0.8	2.1	1.9	12.9	14.1	2.5	5.1
	Aug	80.0	78.4	2.7	4.3	2.7	14.5	14.4	5.3	8.0
	Sep	80.6	79.5	0.8	4.4	3.6	12.6	14.4	6.1	8.8
	Oct	83.9	81.5	4.1	7.8	5.5	15.2	14.5	10.5	13.3
	Nov	85.4	83.3	1.8	6.8	6.3	16.2	14.7	12.5	15.3
	Dec	85.8	85.0	0.4	6.4	7.0	15.8	14.8	13.0	15.8
2005	Jan	85.6	85.6	-0.2	2.0	5.0	14.6	14.8	12.7	-0.2
	Feb	85.1	85.5	-0.5	-0.3	2.6	13.1	14.6	12.1	-0.7
	Mar	85.5	85.4	0.4	-0.3	0.4	12.6	14.3	12.6	-0.3
	Apr	86.7	85.8	1.4	1.3	0.2	13.7	14.1	1.4	1.1
	May	88.1	86.8	1.6	3.5	1.5	14.8	14.1	3.0	2.7
	Jun	89.0	87.9	1.0	4.0	2.9	15.2	14.3	4.0	3.7
	Jul	89.8	88.9	1.0	3.6	3.7	15.3	14.5	5.0	4.7
	Aug	90.2	89.6	0.4	2.4	3.3	12.7	14.3	5.5	5.1
	Sep	93.6	91.2	3.8	5.2	3.7	16.2	14.6	9.5	9.1
	Oct	94.2	92.6	0.6	4.9	4.2	12.2	14.3	10.1	9.8
	Nov	94.6	94.1	0.4	4.9	5.0	10.7	13.9	10.6	10.3
	Dec	94.8	94.5	0.2	1.3	3.6	10.5	13.4	10.9	10.5
2006	Jan	95.0	94.8	0.2	0.9	2.3	11.0	13.1	11.1	0.2
	Feb	95.1	95.0	0.1	0.5	0.9	11.7	13.0	11.2	0.3
	Mar	95.4	95.2	0.3	0.6	0.7	11.6	12.9	11.6	0.6
	Apr	96.3	95.6	1.0	1.4	0.8	11.1	12.7	1.0	1.6
	May	96.8	96.2	0.5	1.8	1.3	9.9	12.3	1.5	2.1
	Jun	97.7	96.9	0.9	2.4	1.9	9.8	11.8	2.4	3.0
	Jul	98.8	97.8	1.1	2.5	2.3	10.0	11.4	3.5	4.2
	Aug	99.1	98.5	0.3	2.3	2.4	9.9	11.2	3.8	4.5
	Sep	99.8	99.2	0.7	2.1	2.3	6.6	10.4	4.6	5.2
	Oct	99.7	99.5	-0.1	0.9	1.8	5.9	9.8	4.5	5.2
	Nov	99.6	99.7	-0.1	0.5	1.2	5.3	9.4	4.4	5.0
	Dec	100.0	99.7	0.4	0.2	0.6	5.5	8.9	4.8	5.5
2007	Jan	101.0	100.2	1.0	1.3	0.7	6.3	8.5	5.9	1.0
	Feb	101.3	100.8	0.3	1.8	1.1	6.6	8.1	6.2	1.3
	Mar	102.5	101.6	1.1	2.5	1.9	7.4	7.8	7.4	2.5
	Apr	103.0	102.3	0.5	2.0	2.1	6.9	7.5	0.5	3.0
	May	104.3	103.3	1.3	2.9	2.5	7.8	7.3	1.8	4.3
	Jun	105.1	104.1	0.8	2.5	2.5	7.6	7.1	2.5	5.1
	Jul	106.2	105.2	1.0	3.1	2.9	7.5	6.9	3.6	6.2
	Aug	107.2	106.2	1.0	2.8	2.8	8.2	6.8	4.6	7.2
	Sep	108.9	107.4	1.6	3.6	3.2	9.2	7.0	6.2	8.9
	Oct	110.4	108.8	1.4	4.0	3.5	10.8	7.4	7.7	10.4
	Nov	114.0	111.1	3.2	6.3	4.7	14.5	8.2	11.2	14.0
	Dec	116.8	113.7	2.5	7.3	5.9	16.8	9.2	14.0	16.8

1/ December 2006 = 100

* Point to point

Moving average

Source: STATIN

Table 1B
JAMAICA: CPI WITHOUT AGRICULTURE AND FUEL

	1/	3 Month	Monthly	3 Month *	3 Month #	12 Month*	12 Month#	FYTD	CYTD	
	CPI-A	AVG. CPI-A	% change	% change	% change	% change	% change	% change	% change	
2004	Jan	140.9	139.8	0.98	2.65	2.82	13.72	10.17	12.41	0.98
	Feb	142.3	140.9	0.96	2.51	2.58	14.24	10.92	13.48	1.94
	Mar	143.5	142.2	0.83	2.79	2.65	14.43	11.65	14.43	2.79
	Apr	144.4	143.4	0.62	2.43	2.58	13.91	12.27	0.62	3.43
	May	145.0	144.3	0.44	1.91	2.38	12.52	12.64	1.07	3.89
	Jun	145.7	145.0	0.47	1.55	1.96	10.97	12.74	1.55	4.38
	Jul	146.4	145.7	0.51	1.44	1.63	10.09	12.68	2.07	4.92
	Aug	149.6	147.2	2.17	3.18	2.06	11.26	12.66	4.28	7.20
	Sep	150.4	148.8	0.55	3.26	2.63	10.58	12.52	4.86	7.78
	Oct	155.0	151.7	3.06	5.87	4.11	12.92	12.54	8.06	11.08
	Nov	156.7	154.1	1.11	4.77	4.64	12.93	12.53	9.26	12.31
	Dec	157.9	156.5	0.71	4.94	5.19	13.11	12.53	10.03	13.11
2005	Jan	159.0	157.9	0.73	2.57	4.07	12.83	12.46	10.84	0.73
	Feb	159.5	158.8	0.31	1.76	3.06	12.11	12.29	11.18	1.04
	Mar	160.2	159.6	0.47	1.52	1.94	11.70	12.08	11.70	1.52
	Apr	161.7	160.5	0.94	1.72	1.67	12.05	11.93	0.94	2.47
	May	163.4	161.8	1.03	2.45	1.90	12.70	11.96	1.98	3.52
	Jun	164.5	163.2	0.65	2.64	2.27	12.90	12.12	2.64	4.20
	Jul	165.4	164.4	0.56	2.26	2.45	12.95	12.35	3.21	4.78
	Aug	166.7	165.5	0.81	2.03	2.31	11.45	12.35	4.05	5.62
	Sep	168.9	167.0	1.32	2.70	2.33	12.30	12.49	5.42	7.02
	Oct	170.2	168.6	0.76	2.91	2.55	9.79	12.21	6.22	7.83
	Nov	171.6	170.3	0.84	2.95	2.85	9.51	11.92	7.11	8.74
	Dec	173.1	171.7	0.87	2.49	2.78	9.68	11.62	8.04	9.68
2006	Jan	174.4	173.1	0.75	2.48	2.63	9.70	11.36	8.85	0.75
	Feb	176.4	174.6	1.11	2.75	2.57	10.57	11.23	10.05	1.86
	Mar	177.8	176.2	0.81	2.69	2.64	10.95	11.17	10.95	2.69
	Apr	179.1	177.7	0.74	2.68	2.70	10.73	11.06	0.74	3.45
	May	180.4	179.1	0.71	2.28	2.55	10.38	10.87	1.46	4.19
	Jun	181.6	180.4	0.69	2.16	2.37	10.42	10.68	2.16	4.91
	Jul	182.6	181.5	0.51	1.93	2.12	10.37	10.48	2.68	5.44
	Aug	183.8	182.7	0.69	1.91	2.00	10.25	10.38	3.39	6.17
	Sep	185.3	183.9	0.82	2.04	1.96	9.71	10.17	4.24	7.05
	Oct	185.9	185.0	0.30	1.83	1.93	9.21	10.12	4.56	7.37
	Nov	186.7	186.0	0.46	1.59	1.82	8.80	10.05	5.04	7.86
	Dec	187.2	186.6	0.24	1.01	1.47	8.13	9.92	5.29	8.13
2007	Jan	189.6	187.8	1.28	1.99	1.53	8.69	9.83	6.64	1.28
	Feb	192.1	189.6	1.32	2.86	1.95	8.92	9.69	8.04	2.61
	Mar	194.7	192.1	1.34	3.99	2.95	9.49	9.57	9.49	3.99
	Apr	196.0	194.3	0.70	3.40	3.41	9.45	9.47	0.70	4.71
	May	197.9	196.2	0.94	3.01	3.46	9.69	9.42	1.64	5.69
	Jun	199.1	197.7	0.65	2.31	2.90	9.65	9.36	2.31	6.38
	Jul	200.4	199.1	0.64	2.24	2.52	9.79	9.31	2.96	7.06
	Aug	202.4	200.6	0.96	2.27	2.27	10.08	9.31	3.95	8.09
	Sep	204.6	202.5	1.10	2.73	2.42	10.39	9.37	5.10	9.29
	Oct	206.8	204.6	1.10	3.21	2.74	11.27	9.55	6.26	10.50
	Nov	212.5	208.0	2.75	5.04	3.66	13.81	9.97	9.19	13.54
	Dec	216.5	211.9	1.84	5.80	4.69	15.63	10.61	11.20	15.63

1/ February 2000 = 100

* Point to point

Moving average

Source: BOJ

Table 2A
Component Contribution to Inflation
December 2007

	Weight in the CPI	Monthly Inflation(%)	Weighted Inflation	% Contrib'n to Inflation
01 FOOD & NON-ALCOHOLIC BEVERAGES	37.46	3.49	1.31	53.6
01.1 Food	35.12	3.64	1.28	52.5
Bread and Cereals	6.10	3.07	0.19	7.7
Meat	7.66	2.83	0.22	8.9
Fish and Seafood	5.33	3.45	0.18	7.6
Milk, Cheese and Eggs	3.11	2.54	0.08	3.2
Oils and Fats	1.64	3.15	0.05	2.1
Fruit	1.14	3.19	0.04	1.5
Vegetables and Starchy Foods	6.86	6.44	0.44	18.1
Vegetables	4.64	6.61	0.31	12.6
Starchy Foods	2.21	6.12	0.14	5.6
Sugar, Jam, Honey, Chocolate and Confectionery	1.72	2.25	0.04	1.6
Food Products n.e.c.	1.55	1.69	0.03	1.1
01.2 Non-Alcoholic Beverages	2.35	1.39	0.03	1.3
Coffee, Tea and Cocoa	0.66	2.52	0.02	0.7
Mineral Waters, Soft Drinks, Fruit and Vegetable Juices	1.69	0.94	0.02	0.7
02 ALCOHOLIC BEVERAGES & TOBACCO	1.38	1.49	0.02	0.8
03 CLOTHING & FOOTWEAR	3.33	4.25	0.14	5.8
03.1 Clothing	2.12	1.63	0.03	1.4
03.2 Footwear	1.22	8.58	0.10	4.3
04 HOUSING, WATER, ELECTRICITY, GAS & OTHER F	12.76	3.24	0.41	17.0
04.1 Rentals for Housing	3.01	0.25	0.01	0.3
04.3 Maintenance and Repair of Dwelling	0.80	0.90	0.01	0.3
04.4 Water Supply and Miscellaneous Services Related to the Dw	1.32	0.19	0.00	0.1
04.5 Electricity, Gas and Other Fuels	7.12	5.56	0.40	16.2
05 FURNISHINGS, HOUSEHOLD EQUIPMENT & ROUTI	4.93	2.09	0.10	4.2
05.1 Furniture and Furnishings (inc. Floor Coverings)	0.69	0.93	0.01	0.3
05.2 Household Textiles	0.32	2.43	0.01	0.3
05.3 Household Appliances	0.56	3.69	0.02	0.8
05.4 Glassware, Tableware and Household Utensils	0.05	0.95	0.00	0.0
05.5 Tools and Equipment for House and Garden	0.15	4.53	0.01	0.3
05.6 Goods and Services for Routine Household Maintenance	3.16	1.94	0.06	2.5
06 HEALTH	3.29	0.49	0.02	0.7
06.1 Medical Products, Appliances and Equipment	1.22	1.07	0.01	0.5
06.2 Health Services	2.07	0.10	0.00	0.1
07 TRANSPORT	12.82	1.71	0.22	9.0
08 COMMUNICATION	3.99	0.00	0.00	0.0
09 RECREATION & CULTURE	3.36	0.55	0.02	0.8
10 EDUCATION	2.14	0.28	0.01	0.2
11 RESTAURANTS & ACCOMMODATION SERVICES	6.19	1.86	0.11	4.7
12 MISCELLANEOUS GOODS & SERVICES	8.37	0.92	0.08	3.2
ALL DIVISIONS	100.00	2.46	2.44	100.0

Table 3
Regional Inflation
December 2007

	GKMA	OUC	Rural
	(%)	(%)	(%)
01 FOOD & NON-ALCOHOLIC BEVERAGES	4.4	3.0	3.1
01.1 Food	4.6	3.1	3.2
Bread and Cereals	4.2	2.9	2.5
Meat	4.6	2.3	1.7
Fish and Seafood	3.0	2.8	3.9
Milk, Cheese and Eggs	4.1	2.1	1.6
Oils and Fats	3.6	2.8	3.1
Fruit	2.9	4.1	3.1
Vegetables and Starchy Foods	7.4	5.0	6.4
Vegetables	7.7	6.0	6.1
Starchy Foods	6.9	3.0	7.0
Sugar, Jam, Honey, Chocolate and Confectionery	2.1	2.9	2.0
Food Products n.e.c.	1.7	1.9	1.6
01.2 Non-Alcoholic Beverages	0.9	0.7	2.0
Coffee, Tea and Cocoa	0.4	0.7	4.3
Mineral Waters, Soft Drinks, Fruit and Vegetable Juices	1.2	0.7	1.1
02 ALCOHOLIC BEVERAGES & TOBACCO	1.8	1.5	1.4
03 CLOTHING & FOOTWEAR	5.8	1.1	4.6
03.1 Clothing	2.3	0.5	1.8
03.2 Footwear	11.8	2.1	9.6
04 HOUSING, WATER, ELECTRICITY, GAS & OTHER FUELS	2.5	3.1	4.2
04.1 Rentals for Housing	0.0	0.6	0.6
04.3 Maintenance and Repair of Dwelling	0.6	1.3	1.0
04.4 Water Supply and Miscellaneous Services Related to the Dwelling	0.2	0.1	0.1
04.5 Electricity, Gas and Other Fuels	5.6	5.2	5.6
05 FURNISHINGS, HOUSEHOLD EQUIPMENT & ROUTINE HO	2.3	1.0	2.5
05.1 Furniture and Furnishings (inc. Floor Coverings)	1.7	0.4	0.4
05.2 Household Textiles	1.2	0.6	3.9
05.3 Household Appliances	5.1	2.5	2.9
05.4 Glassware, Tableware and Household Utensils	0.0	0.5	1.6
05.5 Tools and Equipment for House and Garden	1.5	0.7	5.7
05.6 Goods and Services for Routine Household Maintenance	2.0	1.0	2.5
06 HEALTH	0.3	0.8	0.6
06.1 Medical Products, Appliances and Equipment	0.1	1.9	1.4
06.2 Health Services	0.4	0.1	0.2
07 TRANSPORT	1.2	1.1	2.2
08 COMMUNICATION	0.0	0.0	0.1
09 RECREATION & CULTURE	0.4	1.2	0.4
10 EDUCATION	0.2	0.2	0.4
11 RESTAURANTS & ACCOMMODATION SERVICES	1.9	1.9	2.0
12 MISCELLANEOUS GOODS & SERVICES	0.7	1.5	0.7
ALL DIVISIONS	2.7	2.2	2.6

Table 4
Inflation: Headline & Core

	Monthly		Fiscal Year to Date		12-Mth Core	
	Headline	Core	Headline	Core	Pt to Pt	Average
2003/04						
Apr	1.19	1.08	1.19	1.08	6.44	6.33
May	1.33	1.69	2.54	2.79	7.95	6.25
Jun	1.80	1.87	4.39	4.71	9.57	6.31
Jul	1.26	1.32	5.71	6.10	10.52	6.72
Aug	1.28	1.09	7.06	7.26	11.40	7.20
Sep	2.48	1.16	9.72	8.50	12.07	7.73
Oct	1.76	0.93	11.65	9.51	12.74	8.31
Nov	0.95	1.09	12.71	10.71	13.11	8.89
Dec	0.73	0.56	13.53	11.32	13.16	9.46
Jan	0.83	0.98	14.47	12.41	13.72	10.17
Feb	0.80	0.96	15.38	13.48	14.24	10.92
Mar	0.89	0.83	16.41	14.43	14.43	11.65
2004/05						
Apr	0.45	0.62	0.45	0.62	13.91	12.27
May	0.55	0.44	1.00	1.07	12.52	12.64
Jun	0.67	0.47	1.68	1.55	10.97	12.74
Jul	0.84	0.51	2.53	2.07	10.09	12.68
Aug	2.71	2.17	5.32	4.28	11.26	12.66
Sep	0.76	0.55	6.12	4.86	10.58	12.52
Oct	4.13	3.06	10.50	8.06	12.92	12.54
Nov	1.79	1.11	12.48	9.26	12.93	12.53
Dec	0.42	0.71	12.95	10.03	13.11	12.53
Jan	-0.22	0.73	12.70	10.84	12.83	12.46
Feb	-0.53	0.31	12.10	11.18	12.11	12.29
Mar	0.42	0.47	12.58	11.70	11.70	12.08
2005/06						
Apr	1.43	0.94	1.43	0.94	12.05	11.93
May	1.57	1.03	3.02	1.98	12.70	11.96
Jun	1.00	0.65	4.05	2.64	12.90	12.12
Jul	0.95	0.56	5.04	3.21	12.95	12.35
Aug	0.41	0.81	5.47	4.05	11.45	12.35
Sep	3.81	1.32	9.48	5.42	12.30	12.49
Oct	0.60	0.76	10.14	6.22	9.79	12.21
Nov	0.45	0.84	10.63	7.11	9.51	11.92
Dec	0.22	0.87	10.88	8.04	9.68	11.62
Jan	0.23	0.75	11.14	8.85	9.70	11.36
Feb	0.06	1.11	11.21	10.05	10.57	11.23
Mar	0.34	0.81	11.59	10.95	10.95	11.17
2006/07						
Apr	0.98	0.74	0.98	0.74	10.73	11.06
May	0.49	0.71	1.48	1.46	10.38	10.87
Jun	0.90	0.69	2.39	2.16	10.42	10.68
Jul	1.12	0.51	3.54	2.68	10.37	10.48
Aug	0.29	0.69	3.83	3.39	10.25	10.38
Sep	0.72	0.82	4.58	4.24	9.71	10.17
Oct	-0.09	0.30	4.49	4.56	9.21	10.12
Nov	-0.11	0.46	4.37	5.04	8.80	10.05
Dec	0.44	0.24	4.82	5.29	8.13	9.92
Jan	1.01	1.28	5.88	6.64	8.69	9.83
Feb	0.33	1.32	6.22	8.04	8.92	9.69
Mar	1.15	1.34	7.44	9.49	9.49	9.57
2007/08						
Apr	0.47	0.70	0.47	0.70	9.45	9.47
May	1.29	0.94	1.77	1.64	9.69	9.42
Jun	0.75	0.65	2.54	2.31	9.65	9.36
Jul	1.01	0.64	3.57	2.96	9.79	9.31
Aug	0.98	0.96	4.59	3.95	10.08	9.31
Sep	1.59	1.10	6.24	5.10	10.39	9.37
Oct	1.41	1.10	7.74	6.26	11.27	9.55
Nov	3.23	2.75	11.22	9.19	13.81	9.97
Dec	2.46	1.84	13.95	11.20	15.63	10.61