



THE BALANCE OF PAYMENTS

STATISTICAL UPDATE

September 2005

External Sector Statistics Unit
Economic Information & Publications Department
RESEARCH AND ECONOMIC PROGRAMMING DIVISION

BANK OF JAMAICA
P.O. Box 621
Kingston, Jamaica

TABLE OF CONTENTS

	Pages
External Trade	1
Exports.....	7
Garments.....	8
Bauxite.....	10
Selected Non -Traditionals.....	12
Tourism	13
Private Transfer flows.....	17
B. O. P. Reports.....	19

EXTERNAL TRADE US\$000

	SEPT 2004	SEPT 1/ 2005	CHANGE	%CHANGE	JAN-SEPT 2004	JAN-SEPT 1/ 2005	CHANGE	%CHANGE
TOTAL GOODS EXPORTS(F.O.B)	89234	141813	52579	58.9	1203410	1229815	26405	2.2
TOTAL GOODS IMPORTS(C.I.F)	286384	371460	85076	29.7	2949953	3489219	539266	18.3
TRADE BALANCE	-197150	-229647	-32497	-16.5	-1746543	-2259404	-512861	-29.4

VALUE OF TOTAL GOODS EXPORTS US\$000

	SEPT 2004	SEPT 2005	CHANGE	%CHANGE	JAN-SEPT 2004	JAN-SEPT 2005	CHANGE	%CHANGE
O.FOOD	8489	10624	2135	25.2	214597	167917	-46680	-21.8
1.BEVER. & TOBAC	5571	7789	2218	39.8	44141	61863	17722	40.1
2.CRUDE MATS	41579	84335	42756	102.8	674168	762745	88577	13.1
3.MINERAL FUELS	101	22029	21928	21710.9	25144	51125	25981	103.3
4.ANI.& VEG OILS	6	0	-6	-100.0	46	53	7	15.2
5.CHEMICALS	13365	2085	-11280	-84.4	51739	50142	-1597	-3.1
6.MANUF. GOODS	651	795	144	22.1	11203	7538	-3665	-32.7
7.MACH.& TRANSP.	726	2564	1838	253.2	20573	14065	-6508	-31.6
8.MISC. MANUF	1364	2125	761	55.8	15868	16238	370	2.3
9.MISC. COMMDS.	0	0	0	-	0	0	0	-
GENERAL MERCHANDISE EXPS.	71852	132346	60494	84.2	1057479	1131686	74207	7.0
FREEZONE EXPORTS	11523	3608	-7915	-68.7	93196	45394	-47802	-51.3
GOODS PROCURED IN PORTS	5859	5859	0	0.0	52735	52735	0	0.0
TOTAL GOODS EXPORTS	89234	141813	52579	58.9	1203410	1229815	26405	2.2

TRADITIONAL & NON-TRADITIONAL EXPORTS US\$000

	SEPT 2004	SEPT 2005	CHANGE	%CHANGE	JAN-SEPT 2004	JAN-SEPT 2005	CHANGE	%CHANGE
MAJOR TRAD. EXPORT	39461	83184	43723	110.8	759482	829055	69573	9.2
BAUXITE	7334	8583	1249	17.0	71792	73129	1337	1.9
ALUMINA	31465	74459	42994	136.6	576737	675754	99017	17.2
SUGAR	0	0	0	-	98139	76805	-21334	-21.7
BANANAS	662	142	-520	-78.5	12814	3367	-9447	-73.7
OTHER TRAD. EXPORT	4975	6016	1041	20.9	56472	50446	-6026	-10.7
CITRUS	70	16	-54	-77.1	2000	1326	-674	-33.7
COCOA	63	83	20	31.7	1510	1136	-374	-24.8
COFFEE	1725	1875	150	8.7	29592	16320	-13272	-44.8
PIMENTO	322	657	335	104.0	1071	2112	1041	97.2
RUM	2775	3345	570	20.5	21047	27973	6926	32.9
GYPSUM	20	40	20	100.0	1252	1579	327	26.1
NON-TRAD. EXPORTS	25959	39501	13542	52.2	209224	230009	20785	9.9
RE-EXPORTS	1457	3645	2188	150.2	32301	22176	-10125	-31.3
GENERAL MERCHANDISE EXPS.	71852	132346	60494	84.2	1057479	1131686	74207	7.0
FREEZONE EXPORTS	11523	3608	-7915	-68.7	93196	45394	-47802	-51.3
GOODS PROCURED IN PORTS	5859	5859	0	0.0	52735	52735	0	0.0
TOTAL GOODS EXPORTS	89234	141813	52579	58.9	1203410	1229815	26405	2.2

VALUE OF GOODS IMPORTS BY S.I.T.C. US\$000

	SEPT 2004	SEPT 1/ 2005	CHANGE	%CHANGE	JAN-SEPT 2004	JAN-SEPT 1/ 2005	CHANGE	%CHANGE
0.FOOD	38342	52140	13798	36.0	379993	436194	56201	14.8
1.BEV. & TOBAC	3575	4145	570	15.9	31769	41060	9291	29.2
2.CRUDE MATS.	7387	5346	-2041	-27.6	47663	61698	14035	29.4
3.MIN.FUEL	67438	90158	22720	33.7	674754	934987	260233	38.6
4.ANI & VEG OIL	3680	1330	-2350	-63.9	24057	18641	-5416	-22.5
5.CHEMICAL	25935	45606	19671	75.8	297930	384889	86959	29.2
6.MANUF. GOOD	34837	50691	15854	45.5	387296	489217	101921	26.3
7.MACH.& TRANSP	62390	66435	4045	6.5	617946	632910	14964	2.4
8.MISC.MAN.GOOD	24113	38398	14285	59.2	296813	343566	46753	15.8
9.MISC. COMMDS.	3873	6130	2257	58.3	49242	49277	35	0.1
GENERAL MERCHANDISE IMPORTS	271570	360379	88809	32.7	2807463	3392439	584976	20.8
FREEZONE IMPORTS	5456	1723	-3733	-68.4	58268	12558	-45710	-78.4
GOODS PROCURED IN PORTS	9358	9358	0	0.0	84222	84222	0	0.0
TOTAL GOODS IMPORTS	286384	371460	85076	29.7	2949953	3489219	539266	18.3

1/PROVISIONAL

MAJOR TRADITIONALS (VOLUME, VALUE, PRICE)

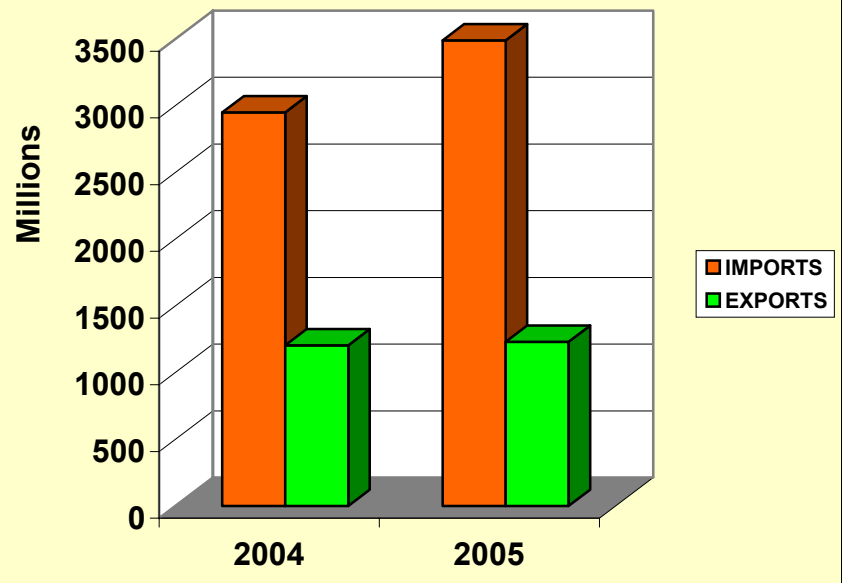
	SEPT 2004	SEPT 1/ 2005	CHANGE	%CHANGE	JAN-SEPT 2004	JAN-SEPT 1/ 2005	CHANGE	%CHANGE
BAUXITE								
Volume ('000 tonnes)	303.6	352.6	49.1	16.2	2976.9	3004.5	27.6	0.9
Value (U.S. \$000)	7334.0	8583.0	1249.0	17.0	71792.0	73129.0	1337.0	1.9
Price (US \$/tonne)	24.2	24.3	0.1	0.3	24.1	24.3	0.2	0.9
ALUMINA								
Volume ('000 tonnes)	154.4	346.2	191.8	124.2	2876.5	3111.2	234.7	8.2
Value (U.S. \$000)	31465.0	74459.0	42994.0	136.6	576737.0	675754.4	99017.4	17.2
Price (US \$/tonne)	203.7	215.1	11.4	5.6	200.5	217.2	16.7	8.3
SUGAR								
Volume ('000 tonnes)	0.0	0.0	0.0	-	157.2	112.9	-44.4	-28.2
Value (U.S. \$000)	0.0	0.0	0.0	-	98139.0	76805.0	-21334.0	-21.7
Price (US \$/tonne)	0.0	0.0	0.0	-	624.2	680.5	56.3	9.0
BANANAS								
Volume ('000 tonnes)	1.4	0.6	-0.8	-58.6	27.6	8.3	-19.4	-70.1
Value (U.S. \$000)	662.0	142.0	-520.0	-78.5	12814.0	3367.0	-9447.0	-73.7
Price (US \$/tonne)	459.7	238.3	-221.5	-48.2	463.6	407.3	-56.2	-12.1

1/PROVISIONAL

External Sector Statistics Unit.

2005 December

VALUE OF IMPORTS & EXPORT US\$Mn
JAN - SEPTEMBER



EXTERNAL TRADE US\$000

	SEPT 2004/2005	SEPT 1/ 2005/2006	CHANGE	%CHANGE	APR-SEPT 2004/2005	APR-SEPT 1/ 2005/2006	CHANGE	%CHANGE
TOTAL GOODS EXPORTS(F.O.B)	89234	141813	52579	58.9	787441	852837	65396	8.3
TOTAL GOODS IMPORTS(C.I.F)	286384	371460	85076	29.7	1981046	2377682	396636	20.0
TRADE BALANCE	-197150	-229647	-32497	-16.5	-1193605	-1524845	-331240	-27.8

VALUE OF TOTAL GOODS EXPORTS US\$000

	SEPT 2004/2005	SEPT 2005/2006	CHANGE	%CHANGE	APR-SEPT 2004/2005	APR-SEPT 2005/2006	CHANGE	%CHANGE
O.FOOD	8489	10624	2135	25.2	132521	108918	-23603	-17.8
1.BEVER. & TOBAC	5571	7789	2218	39.8	31022	43682	12660	40.8
2.CRUDE MATS	41579	84335	42756	102.8	442271	525636	83365	18.8
3.MINERAL FUELS	101	22029	21928	21710.9	18462	45973	27511	149.0
4.ANI.& VEG OILS	6	0	-6	-100.0	34	28	-6	-17.6
5.CHEMICALS	13365	2085	-11280	-84.4	30288	32337	2049	6.8
6.MANUF. GOODS	651	795	144	22.1	5083	5051	-32	-0.6
7.MACH.& TRANSP.	726	2564	1838	253.2	11405	9592	-1813	-15.9
8.MISC. MANUF	1364	2125	761	55.8	10442	11819	1377	13.2
9.MISC. COMMDS.	0	0	0	-	0	0	0	-
GENERAL MERCHANDISE EXPS.	71852	132346	60494	84.2	681528	783036	101508	14.9
FREEZONE EXPORTS	11523	3608	-7915	-68.7	70757	34645	-36112	-51.0
GOODS PROCURED IN PORTS	5859	5859	0	0.0	35156	35156	0	0.0
TOTAL GOODS EXPORTS	89234	141813	52579	58.9	787441	852837	65396	8.3

TRADITIONAL & NON-TRADITIONAL EXPORTS US\$000

	SEPT 2004/2005	SEPT 2005/2006	CHANGE	%CHANGE	APR-SEPT 2004/2005	APR-SEPT 2005/2006	CHANGE	%CHANGE
MAJOR TRAD. EXPORT	39461	83184	43723	110.8	488050	564098	76048	15.6
BAUXITE	7334	8583	1249	17.0	47670	47373	-297	-0.6
ALUMINA	31465	74459	42994	136.6	376615	467983	91368	24.3
SUGAR	0	0	0	-	55593	45375	-10218	-18.4
BANANAS	662	142	-520	-78.5	8172	3367	-4805	-58.8
OTHER TRAD. EXPORT	4975	6016	1041	20.9	39439	35336	-4103	-10.4
CITRUS	70	16	-54	-77.1	741	347	-394	-53.2
COCOA	63	83	20	31.7	1203	705	-498	-41.4
COFFEE	1725	1875	150	8.7	21800	11866	-9934	-45.6
PIMENTO	322	657	335	104.0	501	1739	1238	247.1
RUM	2775	3345	570	20.5	14367	19648	5281	36.8
GYPSUM	20	40	20	100.0	827	1031	204	24.7
NON-TRAD. EXPORTS	25959	39501	13542	52.2	137137	168687	31550	23.0
RE-EXPORTS	1457	3645	2188	150.2	16902	14915	-1987	-11.8
GENERAL MERCHANDISE EXPS.	71852	132346	60494	84.2	681528	783036	101508	14.9
FREEZONE EXPORTS	11523	3608	-7915	-68.7	70757	34645	-36112	-51.0
GOODS PROCURED IN PORTS	5859	5859	0	0.0	35156	35156	0	0.0
TOTAL GOODS EXPORTS	89234	141813	52579	58.9	787441	852837	65396	8.3

VALUE OF GOODS IMPORTS BY S.I.T.C. US\$000

	SEPT 2004/2005	SEPT 1/ 2005/2006	CHANGE	%CHANGE	APR-SEPT 2004/2005	APR-SEPT 1/ 2005/2006	CHANGE	%CHANGE
0.FOOD	38342	52140	13798	36.0	246763	296425	49662	20.1
1.BEV. & TOBAC	3575	4145	570	15.9	20855	28331	7476	35.8
2.CRUDE MATS.	7387	5346	-2041	-27.6	33205	40874	7669	23.1
3.MIN.FUEL	67438	90158	22720	33.7	450258	651006	200748	44.6
4.ANI & VEG OIL	3680	1330	-2350	-63.9	16789	10584	-6205	-37.0
5.CHEMICAL	25935	45606	19671	75.8	187039	256486	69447	37.1
6.MANUF. GOOD	34837	50691	15854	45.5	275730	329508	53778	19.5
7.MACH.& TRANSP	62390	66435	4045	6.5	414699	428895	14196	3.4
8.MISC.MAN.GOOD	24113	38398	14285	59.2	197159	236841	39682	20.1
9.MISC. COMMDS.	3873	6130	2257	58.3	34473	34728	255	0.7
GENERAL MERCHANDISE IMPORTS	271570	360379	88809	32.7	1876970	2313678	436708	23.3
FREEZONE IMPORTS	5456	1723	-3733	-68.4	47928	7856	-40072	-83.6
GOODS PROCURED IN PORTS	9358	9358	0	0.0	56148	56148	0	0.0
TOTAL GOODS IMPORTS	286384	371460	85076	29.7	1981046	2377682	396636	20.0

1/PROVISIONAL

MAJOR TRADITIONALS (VOLUME, VALUE, PRICE)

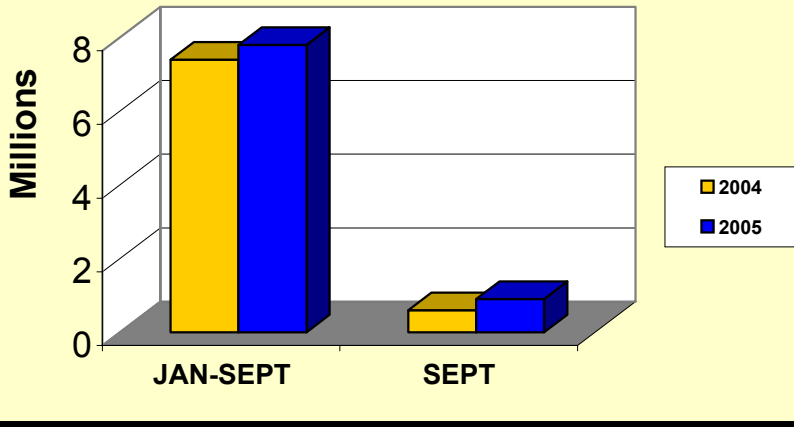
	SEPT	SEPT 1/	CHANGE	%CHANGE	APR-SEPT	APR-SEPT 1/	CHANGE	%CHANGE
	2004/2005	2005/2006			2004/2005	2005/2006		
BAUXITE								
Volume ('000 tonnes)	303.6	352.6	49.1	16.2	1989.9	1946.3	-43.6	-2.2
Value (U.S. \$000)	7334.0	8583.0	1249.0	17.0	47670.0	47373.0	-297.0	-0.6
Price (US \$/tonne)	24.2	24.3	0.1	0.3	24.0	24.3	0.3	1.2
ALUMINA								
Volume ('000 tonnes)	154.4	346.2	191.8	124.2	1859.8	2153.5	293.7	15.8
Value (U.S. \$000)	31465.0	74459.0	42994.0	136.6	376615.0	467983.0	91368.0	24.3
Price (US \$/tonne)	203.7	215.1	11.4	5.6	202.5	217.3	14.7	7.3
SUGAR								
Volume ('000 tonnes)	0.0	0.0	0.0	-	90.6	68.0	-22.6	-24.9
Value (U.S. \$000)	0.0	0.0	0.0	-	55593.0	45375.0	-10218.0	-18.4
Price (US \$/tonne)	0.0	-	-	-	613.5	667.2	53.6	8.7
BANANAS								
Volume ('000 tonnes)	1.4	0.6	-0.8	-58.6	18.1	8.3	-9.9	-54.4
Value (U.S. \$000)	662.0	142.0	-520.0	-78.5	8172.0	3367.0	-4805.0	-58.8
Price (US \$/tonne)	459.7	238.3	-221.5	-48.2	450.8	407.3	-43.4	-9.6

1/PROVISIONAL

External Sector Statistics Unit.
2005 December

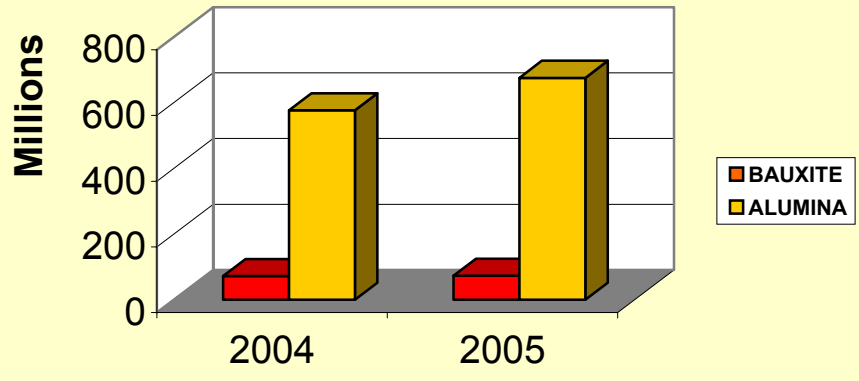
	GARMENTS EXPORTS US\$Mn.			
	2004	2005	CHANGE	%CHANGE
JANUARY	0.7	0.8	0.1	14.3
FEBRUARY	0.9	0.8	-0.1	-11.1
MARCH	0.7	0.9	0.2	28.6
JAN-MARCH	2.3	2.5	0.2	8.7
APRIL	1.2	0.9	-0.3	-25.0
MAY	0.9	0.8	-0.1	-11.1
JUNE	0.8	0.9	0.1	12.5
JAN-JUNE	5.2	5.1	-0.1	-1.9
JULY	0.8	0.9	0.1	12.5
AUGUST	0.8	0.9	0.1	12.5
SEPTEMBER	0.6	0.9	0.3	50.0
JAN-SEPTEMBER	7.4	7.8	0.4	5.4
	2004/2005	2005/2006	CHANGE	%CHANGE
APRIL	1.2	0.9	-0.3	-25.0
MAY	0.9	0.8	-0.1	-11.1
JUNE	0.8	0.9	0.1	12.5
APRIL-JUNE	2.9	2.6	-0.3	-10.3
JULY	0.8	0.9	0.1	12.5
AUGUST	0.8	0.9	0.1	12.5
SEPTEMBER	0.6	0.9	0.3	50.0
APRIL-SEPTEMBER	5.1	5.3	0.2	3.9
SOURCE: STATISTICAL INSTITUTE OF JAMAICA EXTERNAL SECTOR STATISTICS 2005 December				

**GARMENTS EXPORT US\$Mn
JAN - SEPTEMBER**



BAUXITE						
	2004 Volumes (Tonnes)	2005 Volumes (Tonnes)	% Change	2004 Values (\$ 000')	2005 Values (\$ 000')	% Change
JANUARY	375063.0	393019.0	4.8	9167.0	9566.0	4.4
FEBRUARY	230889.0	313182.0	35.6	5643.0	7623.0	35.1
MARCH	380995.0	351972.0	-7.6	9312.0	8567.0	-8.0
JAN-MARCH	986947.0	1058173.0	7.2	24122.0	25756.0	6.8
APRIL	425749.0	277541.0	-34.8	10124.0	6755.0	-33.3
MAY	337950.0	271106.0	-19.8	8037.0	6599.0	-17.9
JUNE	304406.0	380780.0	25.1	7239.0	9268.0	28.0
JAN-JUNE	2055052.0	1987600.0	-3.3	49522.0	48378.0	-2.3
JULY	303894.0	259555.0	-14.6	7342.0	6318.0	-13.9
AUGUST	314337.0	404689.0	28.7	7594.0	9850.0	29.7
SEPTEMBER	303576.0	352629.0	16.2	7334.0	8583.0	17.0
JAN-SEPTEMBER	2976859.0	3004473.0	0.9	71792.0	73129.0	1.9
ALUMINA						
	2004 Volumes (Tonnes)	2005 Volumes (Tonnes)	% Change	2004 Values (\$ 000')	2005 Values (\$ 000')	% Change
JANUARY	353037.0	358434.0	1.5	69492.0	77762.0	11.9
FEBRUARY	340880.0	273943.0	-19.6	67099.0	59432.0	-11.4
MARCH	322755.0	325312.0	0.8	63531.0	70577.0	11.1
JAN-MARCH	1016672.0	957689.0	-5.8	200122.0	207771.0	3.8
APRIL	419226.0	444743.0	6.1	84457.0	97612.0	15.6
MAY	297349.0	332315.0	11.8	59904.0	72937.0	21.8
JUNE	290186.0	317963.0	9.6	58461.0	69787.0	19.4
JAN-JUNE	2023433.0	2052710.0	1.4	402944.0	448107.0	11.2
JULY	371501.0	370108.0	-0.4	75686.0	79595.0	5.2
AUGUST	327109.0	342197.0	4.6	66642.0	73593.0	10.4
SEPTEMBER	154446.0	346223.0	124.2	31465.0	74459.0	136.6
JAN - SEPTEMBER	2876489.0	3111238.0	8.2	576737.0	675754.0	17.2

**BAUXITE/ALUMINA US\$Mn
JAN - SEPTEMBER**



EXPORTS OF SELECTED NON-TRADITIONAL DOMESTIC COMMODITIES US\$ 000

	2004	2005	%	2004	2005	%	2004/2005	2005/2006	%
	JAN-SEPT	JAN-SEPT 1/		SEPT	SEPT 1/		APR-SEPT	APR-SEPT 1/	
COMMODITIES									
FOOD									
ACKEE	5535.0	6361.0	14.9	719.0	1250.0	73.9	3529.0	3647.0	3.3
FISH	5742.0	7698.0	34.1	372.0	168.0	-54.8	3708.0	6269.0	69.1
BREADFRUIT	788.0	560.0	-28.9	129.0	126.0	-2.3	628.0	410.0	-34.7
CUCUMBERS	11.0	9.0	-18.2	0.0	0.0	0.0	8.0	6.0	-25.0
PUMPKINS	306.0	222.0	-27.5	18.0	10.0	-44.4	170.0	117.0	-31.2
OTHER VEGETABLES	181.0	169.0	-6.6	65.0	66.0	1.5	164.0	139.0	-15.2
DASHEEN	763.0	497.0	-34.9	54.0	76.0	40.7	435.0	270.0	-37.9
CASSAVA	0.0	0.0	0.0	0.0	0.0	0.0	0.0	0.0	0.0
SWEET POTATOES	1077.0	1392.0	29.2	163.0	188.0	15.3	768.0	899.0	17.1
YAMS	11336.0	11951.0	5.4	1268.0	1421.0	12.1	7413.0	8588.0	15.9
AVOCADOES	159.0	83.0	-47.8	62.0	60.0	-3.2	159.0	83.0	-47.8
MANGOES	851.0	921.0	8.2	2.0	1.0	-50.0	709.0	773.0	9.0
OTHER ROOTS	323.0	375.0	16.1	25.0	28.0	12.0	210.0	253.0	20.5
PAPAYAS	1726.0	1540.0	-10.8	118.0	113.0		1113.0	1124.0	1.0
MELON	0.0	0.0	0.0	0.0	0.0	0.0	0.0	0.0	0.0
Total	28798.0	31778.0	10.3	2995.0	3507.0	17.1	19014.0	22578.0	18.7
CRUDE MATERIALS									
Cut Flowers	39.0	18.0	-53.8	1.0	1.0	0.0	23.0	9.0	-60.9
Live Plts.&Foliage	7.0	47.0	571.4	0.0	0.0	0.0	7.0	47.0	100.0
Total	46.0	65.0	41.3	1.0	1.0	0.0	30.0	56.0	86.7
1/PROVISIONAL									
2005 December									

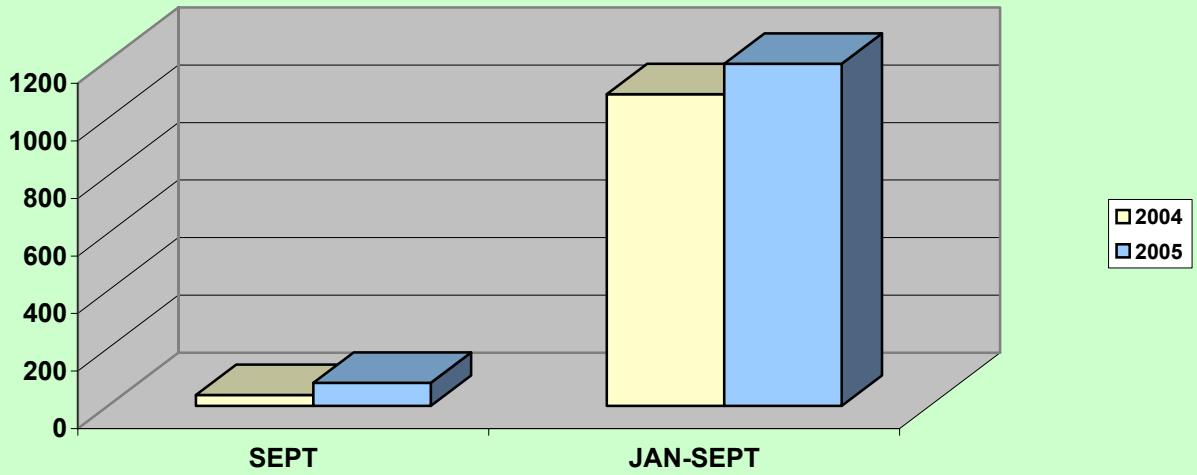
TOURISM STATISTICS

	2004 SEPT	2005 SEPT 1/	% CHNG	2004 JAN-SEPT	2005 JAN-SEPT 1/	% CHNG
TOTAL STOP-OVERS	64940	72926	12.3	1097035	1104191	0.7
FOREIGN NAT. STOP-OVERS(# of)	59859	67162	12.2	1034526	1041532	0.7
Long Stay	55321	63940	15.6	977245	1007687	3.1
Short Stay	4538	3222	-29.0	57281	33845	-40.9
NON-RES. JAMAICANS	5081	5764	13.4	62509	62659	0.2
CRUISE PASSENGERS	48301	69463	43.8	805595	826277	2.6
TOTAL TOURISTS	113241	142389	25.7	1902630	1930468	1.5
ARMED FORCES	0	0	-	0	0	-
TOTAL VISITORS	113241	142389	25.7	1902630	1930468	1.5
AVG. LENGTH OF STAY	11.5	10.5	-8.7	9.6	9.7	0.5
ESTM. EXPD. (US\$MN)	37.7	79.9	111.9	1083.0	1189.3	9.8
Avg. Est. Exp/per person/per day (US\$)						
Stop-Overs	45.0	100.7	123.7	97.3	108.6	11.6
A.forces/Cruise	88.9	88.0	-1.0	82.8	82.2	-0.7

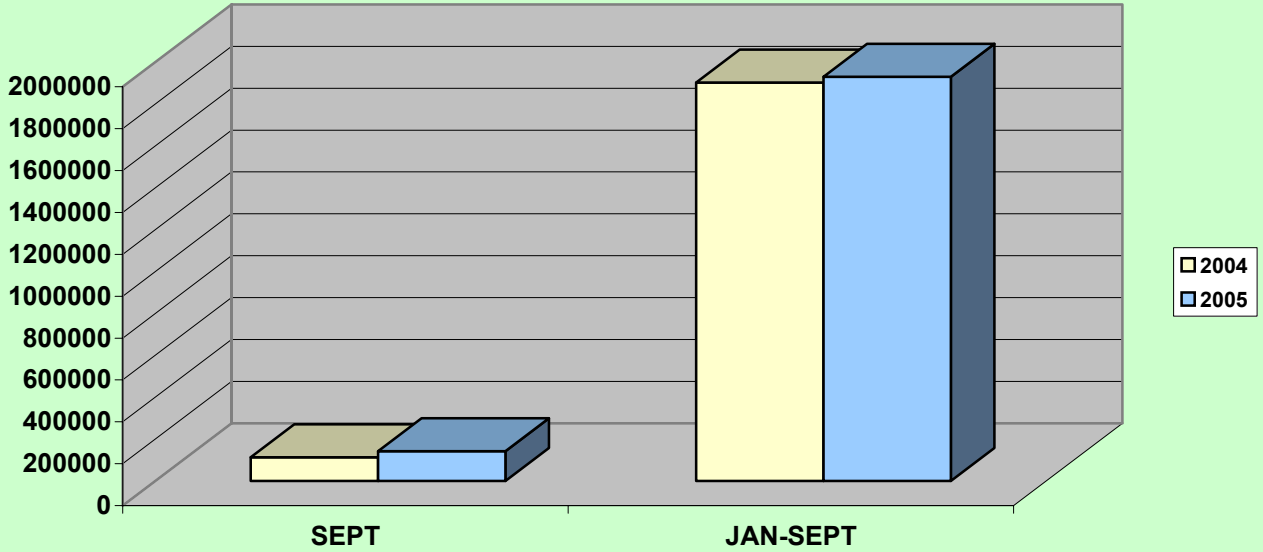
1/ Provisional

External Sector Statistics Unit
Economic Information & Publications Dept.
2005 December

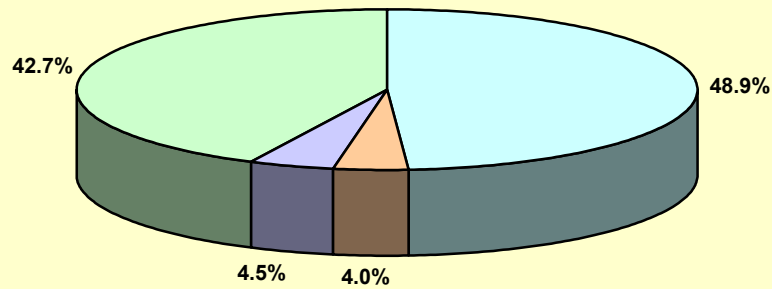
Estimated Tourist Expenditure (US\$m)



Jamaica: Total Visitors

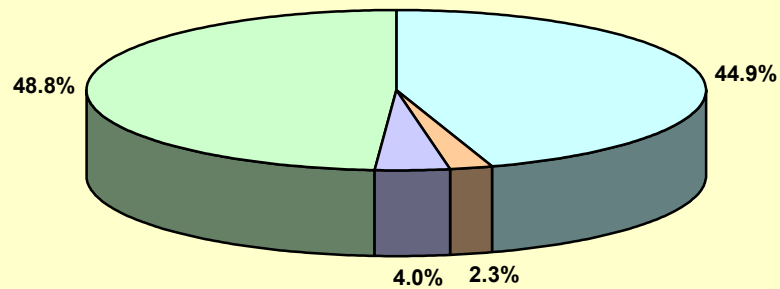


Composition of Visitors September 2004



For. Nat. Long Stay For. Nat. Short Stay Non-Res. Jamaicans Cruise Passengers

Composition of Visitors September 2005



For. Nat. Long Stay For. Nat. Short Stay Non-Res. Jamaicans Cruise Passengers

TOURISM STATISTICS

	2004/2005 APR-SEPT	2005/2006 APR-SEPT 1/	CHNG	% CHNG
TOTAL STOP-OVERS	730950	709222	-21728	-3.0
FOREIGN NAT. STOP-OVERS	684282	664491	-19791	-2.9
Long Stay	647297	643567	-3730	-0.6
Short Stay	36985	20924	-16061	-43.4
NON-RES. JAMAICANS	46668	44731	-1937	-4.2
CRUISE PASSENGERS	436328	451304	14976	3.4
TOTAL TOURISTS	1167278	1160526	-6752	-0.6
ARMED FORCES	0	0	0	-
TOTAL VISITORS	1167278	1160526	-6752	-0.6
AVG.LENGTH.OF STAY	9.9	10.1	0.2	1.6
ESTM.EXPD.(US\$MN)	699.4	751.4	52.0	7.4
Avg. Est.Exp/per person/per day (US\$)				
Stop-Overs	91.1	103.6	12.5	13.8
A.forces/Cruise	86.6	85.8	-0.8	-0.9

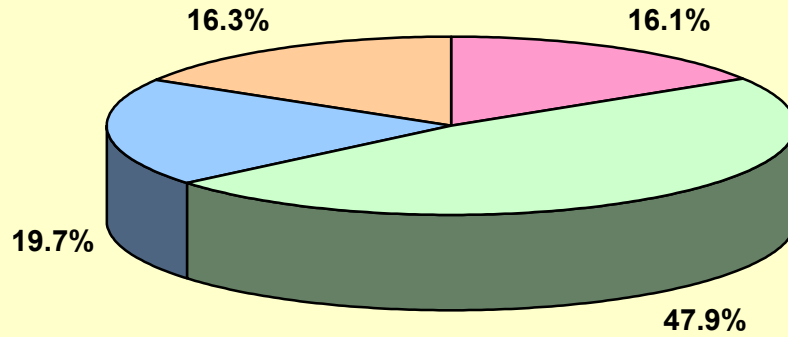
1/Provisional

*External Sector Statistics Unit
Economic Information & Publications Dept.*

SOURCES OF PRIVATE TRANSFERS								
(US\$Mn)								
	2004	2005			2004	2005		
	SEPT	SEPT 1/	CHNG	%CHNG	JAN - SEPT	JAN-SEPT 1/	CHNG	%CHNG
TOTAL INFLOWS	132.70	155.68	22.98	17.32	1191.38	1425.72	234.33	19.67
COMMERCIAL BANKS	21.42	37.89	16.46	76.84	263.83	347.73	83.90	31.80
REMITTANCE COMPS.	63.52	74.66	11.15	17.55	546.89	644.09	97.19	17.77
POST OFFICE	0.11	0.11	0.00	0.00	0.91	0.94	0.03	2.75
BUILDING SOCIETIES	26.10	27.34	1.24	4.76	251.00	231.57	-19.43	-7.74
OTHER	21.55	15.68	-5.87	-27.23	128.75	201.40	72.65	56.43

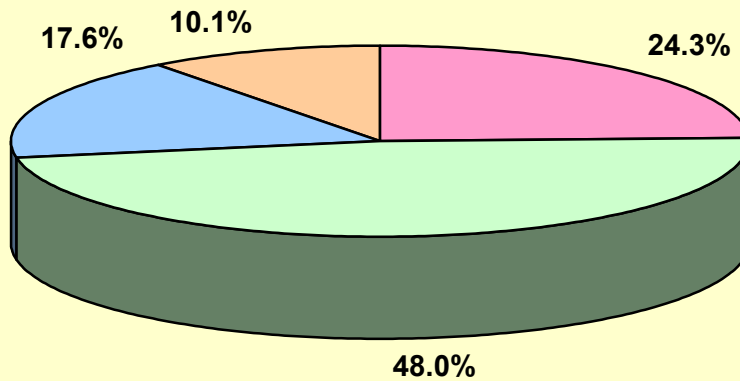
SOURCES OF PRIVATE TRANSFERS				
(US\$Mn)				
	2004/2005	2005/2006		
	APR - SEPT	APR-SEPT 1/	CHNG	%CHNG
TOTAL INFLOWS	796.39	919.37	122.98	15.44
COMMERCIAL BANKS	167.19	223.92	56.73	33.93
REMITTANCE COMPS.	371.96	442.94	70.98	19.08
POST OFFICE	0.61	0.62	0.01	1.64
BUILDING SOCIETIES	168.08	157.81	-10.27	-6.11
OTHER	88.55	94.08	5.53	6.25

Sources of Private Transfers (US\$m)
September 2004



Commercial Banks Remittance Companies Building Societies Other

Sources of Private Transfers (US\$m)
September 2005



Commercial Banks Remittance Companies Building Societies Other

Balance of Payments of Jamaica

US\$Mn.

	Jan-Sep 2004	Jan-Sep 1/ 2005	Change
1. Current Account	-318.2	-566.4	-248.2
A. Goods Balance	-1347.0	-1809.9	-462.9
Exports	1203.3	1229.7	26.4
Imports	2550.3	3039.6	489.3
B. Services Balance	463.0	556.5	93.5
Transportation	-91.8	-145.4	-53.6
Travel	875.1	1011.6	136.5
Other Services	-320.3	-309.7	10.6
C. Income	-432.8	-459.5	-26.7
Compensation of employees	47.9	50.1	2.2
Investment Income	-480.7	-509.6	-28.9
D. Current Transfers	998.6	1146.5	147.9
Official	95.3	95.0	-0.3
Private	903.3	1051.5	148.2
2. Capital & Financial Account	318.2	566.4	248.2
A. Capital Account	0.6	-8.9	-9.5
Capital Transfers	0.6	-8.9	-9.5
Official	10.3	0.3	-10.0
Private	-9.7	-9.2	0.5
Acq/dis. of non-produced non-fin. assets	0.0	0.0	0.0
B. Financial Account	317.6	575.3	257.7
Other Official Investment (incl. Govt. Reserves)	360.3	96.8	-263.5
Other Private Investment (incl. Errors & omissions)	408.9	739.0	330.1
Reserves	-451.6	-260.5	

1/Provisional

External Sector Statistics Unit

Economic Information & Publications Dept.

2005 December

Balance of Payments of Jamaica			
US\$Mn.			
	Jan-Sep 2004	Jan-Sep 1/ 2005	Change
Services (Net)	463.0	556.5	93.5
Inflows	1732.2	1839.4	107.2
Outflows	1269.2	1282.9	13.7
Transportation	-91.8	-145.4	-53.6
Inflows	376.3	376.1	-0.2
Outflows	468.1	521.5	53.4
Travel	875.1	1011.6	136.5
Inflows	1082.9	1189.4	106.5
Outflows	207.8	177.8	-30.0
Other Services	-320.3	-309.7	10.6
Inflows	273.0	273.9	0.9
Outflows	593.3	583.6	-9.7
Income (Net)	-432.8	-459.5	-26.7
Compensation of Employees	47.9	50.1	2.2
Inflows	84.1	93.9	9.8
Outflows	36.2	43.8	7.6
Investment Income	-480.7	-509.6	-28.9
Inflows	97.4	116.5	19.1
Outflows	578.1	626.1	48.0
- Bank of Jamaica	0.4	0.7	0.3
- Government Direct	211.9	252.6	40.7
- Government Guaranteed	1.2	1.7	0.5
- Private	0.0	0.0	0.0
- Direct Investment	261.1	267.8	6.7
- Other	103.4	103.4	0.0
Current Transfers (Net)	998.6	1146.5	147.9
Inflows	1289.4	1523.4	234.0
Outflows	290.8	376.9	86.1
Official	95.3	95.0	-0.3
Inflows	98.0	97.7	-0.3
Outflows	2.7	2.7	0.0
Private	903.3	1051.5	148.2
Inflows	1191.4	1425.7	234.3
Outflows	288.1	374.2	86.1

	Balance of Payments of Jamaica		
	US\$Mn.		
	Jan-Sep 2004	Jan-Sep 1/ 2005	Change
Capital & Financial Account (Net)	318.2	566.4	248.2
Capital Account (Net)	0.6	-8.9	-9.5
1. Capital Transfers	0.6	-8.9	-9.5
Official	10.3	0.3	-10.0
Inflows	10.3	0.3	-10.0
Outflows	0.0	0.0	0.0
Private	-9.7	-9.2	0.5
Inflows	15.5	16.0	0.5
Outflows	25.2	25.2	0.0
2. Acq/disp. of non-produced non-fin. assets	0.0	0.0	0.0
Inflows	0.0	0.0	0.0
Outflows	0.0	0.0	0.0
Financial Account (Net)	317.6	575.3	257.7
Other Official Investments (incl. Govt. Reserves)	360.3	96.8	-263.5
Inflows	765.1	812.9	47.8
Outflows	404.8	716.1	311.3
Other Private Investments (incl. errors & omissions)	408.9	739.0	330.1
Inflows	2106.5	2602.4	495.9
Outflows	1697.6	1863.4	165.8
Reserves	-451.6	-260.5	

	Balance of Payments of Jamaica US\$Mn.			Balance of Payments of Jamaica US\$Mn.		
	Sep 2004	Sep 1/ 2005	Change	Apr-Sep 2004/05	Apr-Sep 1/ 2005/06	Change
1. Current Account	-75.3	-70.4	4.9	-283.8	-479.3	-195.5
A. Goods Balance	-158.5	-180.8	-22.3	-925.1	-1219.9	-294.8
Exports	89.2	141.8	52.6	787.3	852.8	65.5
Imports	247.7	322.6	74.9	1712.4	2072.7	360.3
B. Services Balance	-22.6	5.9	28.5	260.8	299.3	38.5
Transportation	-18.7	-25.3	-6.6	-77.7	-119.2	-41.5
Travel	17.2	56.2	39.0	549.9	624.2	74.3
Other Services	-21.1	-25.0	-3.9	-211.4	-205.7	5.7
C. Income	-17.0	-26.0	-9.0	-284.5	-310.3	-25.8
Compensation of employees	10.1	13.2	3.1	43.1	43.4	0.3
Investment Income	-27.1	-39.2	-12.1	-327.6	-353.7	-26.1
D. Current Transfers	122.8	130.5	7.7	665.0	751.6	86.6
Official	21.2	8.1	-13.1	67.8	55.8	-12.0
Private	101.6	122.4	20.8	597.2	695.8	98.6
2. Capital & Financial Account	75.3	70.4	-4.9	283.8	479.3	195.5
A. Capital Account	-0.2	-0.9	-0.7	1.0	-5.9	-6.9
Capital Transfers	-0.2	-0.9	-0.7	1.0	-5.9	-6.9
Official	1.1	0.0	-1.1	6.9	0.2	-6.7
Private	-1.3	-0.9	0.4	-5.9	-6.1	-0.2
Acq/disp. of non-produced non-fin. assets	0.0	0.0	0.0	0.0	0.0	0.0
B. Financial Account	75.5	71.3	-4.2	282.8	485.2	202.4
Other Official Investment (incl. Govt. Reserves)	-23.0	-28.0	-5.0	106.8	145.3	38.5
Other Private Investment (incl. Errors & omissions)	71.6	100.8	29.2	223.9	557.3	333.4
Reserves	26.9	-1.5	-28.4	-47.9	-217.4	

1/Provisional

External Sector Statistics Unit
Economic Information & Publications Dept.
2005 December

	Balance of Payments of Jamaica			Balance of Payments of Jamaica		
	US\$Mn.			US\$Mn.		
	Sep 2004	Sep 1/ 2005	Change	Apr-Sep 2004/05	Apr-Sep 1/ 2005/06	Change
Services (Net)	-22.6	5.9	28.5	260.8	299.3	38.5
Inflows	89.8	137.6	47.8	1108.6	1156.8	48.2
Outflows	112.4	131.7	19.3	847.8	857.5	9.7
Transportation	-18.7	-25.3	-6.6	-77.7	-119.2	-41.5
Inflows	22.4	27.7	5.3	230.8	226.1	-4.7
Outflows	41.1	53.0	11.9	308.5	345.3	36.8
Travel	17.2	56.2	39.0	549.9	624.2	74.3
Inflows	37.7	79.9	42.2	699.3	751.4	52.1
Outflows	20.5	23.7	3.2	149.4	127.2	-22.2
Other Services	-21.1	-25.0	-3.9	-211.4	-205.7	5.7
Inflows	29.7	30.0	0.3	178.5	179.3	0.8
Outflows	50.8	55.0	4.2	389.9	385.0	-4.9
Income (Net)	-17.0	-26.0	-9.0	-284.5	-310.3	-25.8
Compensation of Employees	10.1	13.2	3.1	43.1	43.4	0.3
Inflows	14.9	18.0	3.1	67.8	72.5	4.7
Outflows	4.8	4.8	0.0	24.7	29.1	4.4
Investment Income	-27.1	-39.2	-12.1	-327.6	-353.7	-26.1
Inflows	11.5	15.0	3.5	65.7	81.0	15.3
Outflows	38.6	54.2	15.6	393.3	434.7	41.4
- Bank of Jamaica	0.2	0.1	0.0	0.2	0.5	0.3
- Government Direct	12.9	14.0	1.1	158.9	171.3	12.4
- Government Guaranteed	0.3	0.6	0.3	0.9	1.4	0.5
- Private	0.0	0.0	0.0	0.0	0.0	0.0
- Direct Investment	13.8	28.1	14.3	164.3	192.6	28.3
- Other	11.5	11.5	0.0	68.9	68.9	0.0
Current Transfers (Net)	122.8	130.5	7.7	665.0	751.6	86.6
Inflows	154.2	164.1	9.9	866.0	977.0	111.0
Outflows	31.4	33.6	2.2	201.0	225.4	24.4
Official	21.2	8.1	-13.1	67.8	55.8	-12.0
Inflows	21.5	8.4	-13.1	69.6	57.6	-12.0
Outflows	0.3	0.3	0.0	1.8	1.8	0.0
Private	101.6	122.4	20.8	597.2	695.8	98.6
Inflows	132.7	155.7	23.0	796.4	919.4	123.0
Outflows	31.1	33.3	2.2	199.2	223.6	24.4

	Balance of Payments of Jamaica			Balance of Payments of Jamaica		
	US\$Mn.			US\$Mn.		
	Sep 2004	Sep 1/ 2005	Change	Apr-Sep 2004/05	Apr-Sep 1/ 2005/06	Change
Capital & Financial Account (Net)	75.3	70.4	-4.9	283.8	479.3	195.5
Capital Account (Net)	-0.2	-0.9	-0.7	1.0	-5.9	-6.9
1. Capital Transfers	-0.2	-0.9	-0.7	1.0	-5.9	-6.9
Official	1.1	0.0	-1.1	6.9	0.2	-6.7
Inflows	1.1	0.0	-1.1	6.9	0.2	-6.7
Outflows	0.0	0.0	0.0	0.0	0.0	0.0
Private	-1.3	-0.9	0.4	-5.9	-6.1	-0.2
Inflows	1.5	1.9	0.4	10.9	10.7	-0.2
Outflows	2.8	2.8	0.0	16.8	16.8	0.0
2. Acq/disp. of non-produced non-fin. assets	0.0	0.0	0.0	0.0	0.0	0.0
Inflows	0.0	0.0	0.0	0.0	0.0	0.0
Outflows	0.0	0.0	0.0	0.0	0.0	0.0
Financial Account (Net)	75.5	71.3	-4.2	282.8	485.2	202.4
Other Official Investments (incl. Govt. Reserves)	-23.0	-28.0	-5.0	106.8	145.3	38.5
Inflows	3.7	21.9	18.2	452.5	804.5	352.0
Outflows	26.7	49.9	23.2	345.7	659.2	313.5
Other Private Investments (incl.errors & omissions)	71.6	100.8	29.2	223.9	557.3	333.4
Inflows	308.2	299.4	-8.8	1371.2	1896.8	525.6
Outflows	236.6	198.6	-38.0	1147.3	1339.5	192.2
Reserves	26.9	-1.5	-28.4	-47.9	-217.4	

**BALANCE OF PAYMENTS OF JAMAICA
US\$MN**

	Jan-Jul 2004	Jan-Jul 1/ 2005	Change	Aug 2004	Aug 1/ 2005	Change	Jan-Aug 2004	Jan-Aug 1/ 2005	Change	Sep 2004	Sep 1/ 2005	Change	Jan-Sep 2004	Jan-Sep 1/ 2005	Change
1. Current Account	-144.7	-388.3	-243.6	-98.2	-107.7	-9.5	-242.9	-496.0	-253.1	-75.3	-70.4	4.9	-318.2	-566.4	-248.2
A. Goods Balance	-1011.1	-1389.7	-378.6	-177.4	-239.4	-62.0	-1188.5	-1629.1	-440.6	-158.5	-180.8	-22.3	-1347.0	-1809.9	-462.9
Exports	983.2	936.0	-47.2	130.9	151.9	21.0	1114.1	1087.9	-26.2	89.2	141.8	52.6	1203.3	1229.7	26.4
Imports	1994.3	2325.7	331.4	308.3	391.3	83.0	2302.6	2717.0	414.4	247.7	322.6	74.9	2550.3	3039.6	489.3
B. Services Balance	443.5	514.3	70.8	42.1	36.3	-5.8	485.6	550.6	65.0	-22.6	5.9	28.5	463.0	556.5	93.5
Transportation	-56.8	-95.9	-39.1	-16.3	-24.2	-7.9	-73.1	-120.1	-47.0	-18.7	-25.3	-6.6	-91.8	-145.4	-53.6
Travel	762.1	861.4	99.3	95.8	94.0	-1.8	857.9	955.4	97.5	17.2	56.2	39.0	875.1	1011.6	136.5
Other Services	-261.8	-251.2	10.6	-37.4	-33.5	3.9	-299.2	-284.7	14.5	-21.1	-25.0	-3.9	-320.3	-309.7	10.6
C. Income	-351.8	-396.5	-44.7	-64.0	-37.0	27.0	-415.8	-433.5	-17.7	-17.0	-26.0	-9.0	-432.8	-459.5	-26.7
Compensation of employees	27.5	24.9	-2.6	10.3	12.0	1.7	37.8	36.9	-0.9	10.1	13.2	3.1	47.9	50.1	2.2
Investment Income	-379.3	-421.4	-42.1	-74.3	-49.0	25.3	-453.6	-470.4	-16.8	-27.1	-39.2	-12.1	-480.7	-509.6	-28.9
D. Current Transfers	774.7	883.6	108.9	101.1	132.4	31.3	875.8	1016.0	140.2	122.8	130.5	7.7	998.6	1146.5	147.9
General Government	65.1	77.8	12.7	9.0	9.1	0.1	74.1	86.9	12.8	21.2	8.1	-13.1	95.3	95.0	-0.3
Other Sector	709.6	805.8	96.2	92.1	123.3	31.2	801.7	929.1	127.4	101.6	122.4	20.8	903.3	1051.5	148.2
2. Capital & Financial Account	144.7	388.3	243.6	98.2	107.7	9.5	242.9	496.0	253.1	75.3	70.4	-4.9	318.2	566.4	248.2
A. Capital Account	0.8	-7.1	-7.9	0.0	-0.9	-0.9	0.8	-8.0	-8.8	-0.2	-0.9	-0.7	0.6	-8.9	-9.5
Capital Transfers	0.8	-7.1	-7.9	0.0	-0.9	-0.9	0.8	-8.0	-8.8	-0.2	-0.9	-0.7	0.6	-8.9	-9.5
General Government	8.1	0.3	-7.8	1.1	0.0	-1.1	9.2	0.3	-8.9	1.1	0.0	-1.1	10.3	0.3	-10.0
Other Sector	-7.3	-7.4	-0.1	-1.1	-0.9	0.2	-8.4	-8.3	0.1	-1.3	-0.9	0.4	-9.7	-9.2	0.5
Acq/disp. of non-produced non-fin. assets	0.0	0.0	0.0	0.0	0.0	0.0	0.0	0.0	0.0	0.0	0.0	0.0	0.0	0.0	0.0
B. Financial Account	143.9	395.4	251.5	98.2	108.6	10.4	242.1	504.0	261.9	75.5	71.3	-4.2	317.6	575.3	257.7
Other Official Investment (incl. Govt. Reserves)	577.9	15.6	-562.3	-194.6	109.2	303.8	383.3	124.8	-258.5	-23.0	-28.0	-5.0	360.3	96.8	-263.5
Other Private Investment (incl. errors & omissions)	-4.3	670.5	674.8	341.6	-32.3	-373.9	337.3	638.2	300.9	71.6	100.8	29.2	408.9	739.0	330.1
Reserves	-429.7	-290.7		-48.8	31.7		-478.5	-259.0		26.9	-1.5		-451.6	-260.5	

1/Provisional

BALANCE OF PAYMENTS OF JAMAICA

US\$MN

	Jul	Jul 1/	Change	Aug	Aug 1/	Change	Apr-Aug	Apr-Aug 1/	Change	Sep	Sep 1/	Change	Apr-Sep	Apr-Sep 1/	Change
	2004/05	2005/06		2004/05	2005/06		2004/05	2005/06		2004/05	2005/06		2004/05	2005/06	
1. Current Account	-53.3	-56.2	-2.9	-98.2	-107.7	-9.5	-208.5	-408.9	-200.4	-75.3	-70.4	4.9	-283.8	-479.3	-195.5
A. Goods Balance	-195.2	-203.7	-8.5	-177.4	-239.4	-62.0	-766.6	-1039.1	-272.5	-158.5	-180.8	-22.3	-925.1	-1219.9	-294.8
Exports	134.5	126.4	-8.1	130.9	151.9	21.0	698.1	711.0	12.9	89.2	141.8	52.6	787.3	852.8	65.5
Imports	329.7	330.1	0.4	308.3	391.3	83.0	1464.7	1750.1	285.4	247.7	322.6	74.9	1712.4	2072.7	360.3
B. Services Balance	81.2	91.1	9.9	42.1	36.3	-5.8	283.4	293.4	10.0	-22.6	5.9	28.5	260.8	299.3	38.5
Transportation	-13.6	-14.4	-0.8	-16.3	-24.2	-7.9	-59.0	-93.9	-34.9	-18.7	-25.3	-6.6	-77.7	-119.2	-41.5
Travel	139.2	147.8	8.6	95.8	94.0	-1.8	532.7	568.0	35.3	17.2	56.2	39.0	549.9	624.2	74.3
Other Services	-44.4	-42.3	2.1	-37.4	-33.5	3.9	-190.3	-180.7	9.6	-21.1	-25.0	-3.9	-211.4	-205.7	5.7
C. Income	-50.5	-69.3	-18.8	-64.0	-37.0	27.0	-267.5	-284.3	-16.8	-17.0	-26.0	-9.0	-284.5	-310.3	-25.8
Compensation of employees	11.6	8.4	-3.2	10.3	12.0	1.7	33.0	30.2	-2.8	10.1	13.2	3.1	43.1	43.4	0.3
Investment Income	-62.1	-77.7	-15.6	-74.3	-49.0	25.3	-300.5	-314.5	-14.0	-27.1	-39.2	-12.1	-327.6	-353.7	-26.1
D. Current Transfers	111.2	125.7	14.5	101.1	132.4	31.3	542.2	621.1	78.9	122.8	130.5	7.7	665.0	751.6	86.6
General Government	10.6	9.8	-0.8	9.0	9.1	0.1	46.6	47.7	1.1	21.2	8.1	-13.1	67.8	55.8	-12.0
Other Sector	100.6	115.9	15.3	92.1	123.3	31.2	495.6	573.4	77.8	101.6	122.4	20.8	597.2	695.8	98.6
2. Capital & Financial Account	53.3	56.2	2.9	98.2	107.7	9.5	208.5	408.9	200.4	75.3	70.4	-4.9	283.8	479.3	195.5
A. Capital Account	0.4	-1.3	-1.7	0.0	-0.9	-0.9	1.2	-5.0	-6.2	-0.2	-0.9	-0.7	1.0	-5.9	-6.9
Capital Transfers	0.4	-1.3	-1.7	0.0	-0.9	-0.9	1.2	-5.0	-6.2	-0.2	-0.9	-0.7	1.0	-5.9	-6.9
General Government	1.2	0.0	-1.2	1.1	0.0	-1.1	5.8	0.2	-5.6	1.1	0.0	-1.1	6.9	0.2	-6.7
Other Sector	-0.8	-1.3	-0.5	-1.1	-0.9	0.2	-4.6	-5.2	-0.6	-1.3	-0.9	0.4	-5.9	-6.1	-0.2
Acq/dis. of non-produced non-fin. assets	0.0	0.0	0.0	0.0	0.0	0.0	0.0	0.0	0.0	0.0	0.0	0.0	0.0	0.0	0.0
B. Financial Account	52.9	57.5	4.6	98.2	108.6	10.4	207.3	413.9	206.6	75.5	71.3	-4.2	282.8	485.2	202.4
Other Official Investment (incl. Govt. Reserves)	250.5	61.9	-188.6	-194.6	109.2	303.8	129.8	173.3	43.5	-23.0	-28.0	-5.0	106.8	145.3	38.5
Other Private Investment (incl. errors & omissions)	-207.0	-12.0	195.0	341.6	-32.3	-373.9	152.3	456.5	304.2	71.6	100.8	29.2	223.9	557.3	333.4
Reserves	9.4	7.6	-1.8	-48.8	31.7	-80.5	-74.8	-215.9	-141.3	26.9	-1.5	-18.4	-47.9	-217.4	-169.5

1/Provisional

BALANCE OF PAYMENTS OF JAMAICA						
US\$MN						
	Jan-Dec	Jan-Dec	Jan-Dec	Jan-Dec	Jan-Dec	Jan-Dec
	1999	2000	2001	2002	2003	2004
1. Current Account	-216.3	-367.4	-757.3	-1074.4	-772.6	-509.4
A. Goods Balance	-1186.5	-1441.5	-1618.2	-1870.5	-1942.6	-1944.5
Exports	1499.1	1562.8	1454.4	1309.1	1385.6	1601.6
Imports	2685.6	3004.3	3072.6	3179.6	3328.2	3546.1
B. Services Balance	655.4	603.2	383.1	314.7	552.3	571.7
Transportation	-233.6	-256.6	-256.2	-245.6	-143.6	-150.3
Travel	1052.4	1123.9	1026.2	950.3	1102.7	1151.5
Other Services	-163.4	-264.1	-386.9	-390.0	-406.7	-429.5
C. Income	-332.5	-349.9	-437.8	-605.5	-571.4	-582.7
Compensation of employees	70.3	67.4	74.6	82.1	70.7	84.5
Investment Income	-402.8	-417.3	-512.4	-687.6	-642.1	-667.2
D. Current Transfers	647.3	820.8	915.6	1086.9	1189.1	1446.1
General Government	45.8	147.9	119.7	107.6	105.2	159.9
Other Sector	601.5	672.9	795.9	979.3	1083.9	1286.2
2. Capital & Financial Account	216.3	367.4	757.3	1074.4	772.6	509.4
A. Capital Account	13.1	2.2	-23.6	-16.9	0.1	2.2
Capital Transfers	13.1	2.2	-23.6	-16.9	-0.3	2.2
General Government	4.1	15.6	2.2	0.2	0.1	13.8
Other Sector	9.0	-13.4	-25.8	-17.1	-0.4	-11.6
B. Financial Account	203.2	365.2	780.9	1091.3	772.5	507.2
Other Official Investment	-331.4	383.7	653.4	77.1	-362.5	479.2
Other Private Investment (incl.errors & omissions)	402.8	500.8	998.8	770.5	702.9	721.6
Reserves	131.8	-519.3	-871.3	243.7	432.1	-693.6

BALANCE OF PAYMENTS OF JAMAICA						
US\$MN						
	Apr-Mar	Apr-Mar	Apr-Mar	Apr-Mar	Apr-Mar	Apr-Mar 1/
	1999/00	2000/01	2001/02	2002/03	2003/04	2004/05
1. Current Account	-304.1	-497.2	-753.2	-1161.9	-561.9	-562.1
A. Goods Balance	-1251.9	-1541.7	-1577.3	-2025.8	-1832.0	-2112.6
Exports	1557.7	1517.7	1423.7	1313.6	1467.4	1562.5
Imports	2809.6	3059.4	3001.0	3339.4	3299.3	3675.1
B. Services Balance	622.4	592.7	323.2	367.8	596.5	626.7
Transportation	-244.1	-253.6	-253.7	-226.6	-128.0	-162.4
Travel	1058.3	1149.6	955.6	985.7	1144.6	1213.7
Other Services	-191.8	-303.3	-378.7	-391.3	-420.1	-424.6
C. Income	-369.5	-382.4	-457.6	-613.0	-565.8	-583.6
Compensation of employees	67.7	67.4	73.4	82.8	71.9	86.4
Investment Income	-437.2	-449.8	-531.0	-695.8	-637.6	-670.0
D. Current Transfers	694.9	834.2	958.5	1109.1	1239.4	1507.4
General Government	70.4	141.5	116.5	108.7	106.3	171.6
Other Sector	624.5	692.7	842.0	1000.4	1133.1	1335.8
2. Capital & Financial Account	304.1	497.2	753.2	1161.9	561.9	562.1
A. Capital Account	12.5	-6.7	-24.2	-12.1	0.5	-0.4
Capital Transfers	12.5	-6.7	-24.2	-12.1	0.1	-0.4
General Government	9.0	10.2	0.4	0.2	3.5	10.5
Other Sector	3.5	-16.9	-24.6	-12.3	-3.4	-10.9
B. Financial Account	291.6	503.9	777.4	1174.0	561.4	562.5
Other Official Investment	-123.2	342.0	591.2	-223.3	142.0	177.2
Other Private Investment (incl.errors & omissions)	536.8	744.7	841.6	795.4	648.3	718.3
Reserves	-122.0	-582.8	-655.4	601.9	-228.9	-333.0