



# THE BALANCE OF PAYMENTS

## STATISTICAL UPDATE

April 2005

**External Sector Statistics Unit**  
Economic Information & Publications Department  
RESEARCH AND ECONOMIC PROGRAMMING DIVISION

BANK OF JAMAICA  
P.O. Box 621  
Kingston, Jamaica

## TABLE OF CONTENTS

	<b>Pages</b>
External Trade .....	1
Exports.....	3
Garments.....	5
Bauxite.....	7
Selected Non -Traditionals.....	9
Tourism .....	10
Private Transfer flows.....	14
B. O. P. Reports.....	16

## EXTERNAL TRADE US\$000

	APR 1/ 2004	APR 2/ 2005	CHANGE	%CHANGE	JAN-APR 1/ 2004	JAN-APR 2/ 2005	CHANGE	%CHANGE
TOTAL GOODS EXPORTS(F.O.B)	152520	162615	10095	6.6	573890	529744	-44146	-7.7
TOTAL GOODS IMPORTS(C.I.F)	302767	398795	96028	31.7	1262800	1457241	194441	15.4
TRADE BALANCE	-150247	-236180	-85933	-57.2	-688910	-927497	-238587	-34.6

## VALUE OF TOTAL GOODS EXPORTS US\$000

	APR 2004	APR 2005	CHANGE	%CHANGE	JAN-APR 2004	JAN-APR 2005	CHANGE	%CHANGE
0.FOOD	27047	39647	12600	46.6	109123	98646	-10477	-9.6
1.BEVER. & TOBAC	5565	6343	778	14.0	18684	24524	5840	31.3
2.CRUDE MATS	102010	102752	742	0.7	344887	334391	-10496	-3.0
3.MINERAL FUELS	247	372	125	50.6	6929	5524	-1405	-20.3
4.ANI. & VEG OILS	2	8	6	300.0	14	33	19	135.7
5.CHEMICALS	3910	1685	-2225	-56.9	25361	19490	-5871	-23.1
6.MANUF. GOODS	837	886	49	5.9	6957	3373	-3584	-51.5
7.MACH. & TRANSP.	1735	1020	-715	-41.2	10903	5493	-5410	-49.6
8.MISC. MANUF	1917	1581	-336	-17.5	7343	6000	-1343	-18.3
9.MISC. COMMDS.	0	0	0	-	0	0	0	-
<b>GENERAL MERCHANDISE EXPS.</b>	<b>143270</b>	<b>154294</b>	<b>11024</b>	<b>7.7</b>	<b>530201</b>	<b>497474</b>	<b>-32727</b>	<b>-6.2</b>
FREEZONE EXPORTS	5250	3921	-1329	-25.3	27689	14670	-13019	-47.0
GOODS PROCURED IN PORTS	4000	4400	400	10.0	16000	17600	1600	10.0
<b>TOTAL GOODS EXPORTS</b>	<b>152520</b>	<b>162615</b>	<b>10095</b>	<b>6.6</b>	<b>573890</b>	<b>529744</b>	<b>-44146</b>	<b>-7.7</b>

## TRADITIONAL &amp; NON-TRADITIONAL EXPORTS US\$000

	APR 2004	APR 2005	CHANGE	%CHANGE	JAN-APR 2004	JAN-APR 2005	CHANGE	%CHANGE
<b>MAJOR TRAD. EXPORT</b>	<b>109369</b>	<b>128506</b>	<b>19137</b>	<b>17.5</b>	<b>391781</b>	<b>386970</b>	<b>-4811</b>	<b>-1.2</b>
BAUXITE	9963	6755	-3208	-32.2	33649	32511	-1138	-3.4
ALUMINA	83556	93182	9626	11.5	295094	294460	-634	-0.2
SUGAR	14471	28569	14098	97.4	57017	59999	2982	5.2
BANANAS	1379	0	-1379	-100.0	6021	0	-6021	-100.0
<b>OTHER TRAD. EXPORT</b>	<b>5826</b>	<b>5878</b>	<b>52</b>	<b>0.9</b>	<b>22859</b>	<b>20988</b>	<b>-1871</b>	<b>-8.2</b>
CITRUS	281	68	-213	-75.8	1540	1047	-493	-32.0
COCOA	454	135	-319	-70.3	761	566	-195	-25.6
COFFEE	2363	2391	28	1.2	10155	6845	-3310	-32.6
PIMENTO	11	391	380	3454.5	581	764	183	31.5
RUM	2558	2571	13	0.5	9238	10896	1658	17.9
GYPSUM	159	322	163	102.5	584	870	286	49.0
<b>NON-TRAD. EXPORTS</b>	<b>25557</b>	<b>17834</b>	<b>-7723</b>	<b>-30.2</b>	<b>97644</b>	<b>80179</b>	<b>-17465</b>	<b>-17.9</b>
RE-EXPORTS	2518	2076	-442	-17.6	17917	9337	-8580	-47.9
<b>GENERAL MERCHANDISE EXPS.</b>	<b>143270</b>	<b>154294</b>	<b>11024</b>	<b>7.7</b>	<b>530201</b>	<b>497474</b>	<b>-32727</b>	<b>-6.2</b>
FREEZONE EXPORTS	5250	3921	-1329	-25.3	27689	14670	-13019	-47.0
GOODS PROCURED IN PORTS	4000	4400	400	10.0	16000	17600	1600	10.0
<b>TOTAL GOODS EXPORTS</b>	<b>152520</b>	<b>162615</b>	<b>10095</b>	<b>6.6</b>	<b>573890</b>	<b>529744</b>	<b>-44146</b>	<b>-7.7</b>

VALUE OF GOODS IMPORTS BY S.I.T.C. US\$000

	APR 2004	APR 2005	CHANGE	%CHANGE	JAN-APR 2004	JAN-APR 2005	CHANGE	%CHANGE
0.FOOD	32591	57576	24985	76.7	165821	197345	31524	19.0
1.BEV. & TOBAC	3049	5189	2140	70.2	13963	17918	3955	28.3
2.CRUDE MATS.	6833	11290	4457	65.2	21291	32114	10823	50.8
3.MIN.FUEL	70099	73669	3570	5.1	294595	316418	21823	7.4
4.ANI & VEG OIL	4043	3220	-823	-20.4	11311	11277	-34	-0.3
5.CHEMICAL	26456	47552	21096	79.7	137347	171170	33823	24.6
6.MANUF. GOOD	43370	62972	19602	45.2	154936	222681	67745	43.7
7.MACH.& TRANSP	67572	81590	14018	20.7	270819	285605	14786	5.5
8.MISC.MAN.GOOD	30064	41633	11569	38.5	129718	148358	18640	14.4
9.MISC. COMMDS.	6456	4837	-1619	-25.1	21225	19386	-1839	-8.7
<b>GENERAL MERCHANDISE IMPORTS</b>	<b>290533</b>	<b>389528</b>	<b>98995</b>	<b>34.1</b>	<b>1221026.0</b>	<b>1422272</b>	<b>201246</b>	<b>16.5</b>
FREEZONE IMPORTS	5834	2267	-3567	-61.1	16174.0	6969	-9205	-56.9
GOODS PROCURED IN PORTS	6400	7000	600	9.4	25600.0	28000	2400	9.4
<b>TOTAL GOODS IMPORTS</b>	<b>302767</b>	<b>398795</b>	<b>96028</b>	<b>31.7</b>	<b>1262800.0</b>	<b>1457241</b>	<b>194441</b>	<b>15.4</b>

**MAJOR TRADITIONALS (VOLUME, VALUE, PRICE)**

	<b>APR</b>	<b>APR</b>	<b>CHANGE</b>	<b>%CHANGE</b>	<b>JAN-APR</b>	<b>JAN-APR</b>	<b>CHANGE</b>	<b>%CHANGE</b>
	<b>2004</b>	<b>2005</b>			<b>2004</b>	<b>2005</b>		
<b>BAUXITE</b>								
Volume ('000 tonnes)	425.7	277.5	-148.2	-34.8	1412.7	1335.7	-77.0	-5.4
<b>Value (U.S. \$000)</b>	<b>9963.0</b>	<b>6755.0</b>	<b>-3208.0</b>	<b>-32.2</b>	<b>33649.0</b>	<b>32511.0</b>	<b>-1138.0</b>	<b>-3.4</b>
Price (US \$/tonne)	23.4	24.3	0.9	4.0	23.8	24.3	0.5	2.2
<b>ALUMINA</b>								
Volume ('000 tonnes)	419.2	444.6	25.4	6.1	1435.9	1402.3	-33.6	-2.3
<b>Value (U.S. \$000)</b>	<b>83556.0</b>	<b>93182.0</b>	<b>9626.0</b>	<b>11.5</b>	<b>295094.0</b>	<b>294460.0</b>	<b>-634.0</b>	<b>-0.2</b>
Price (US \$/tonne)	199.3	209.6	10.3	5.1	205.5	210.0	4.5	2.2
<b>SUGAR</b>								
Volume ('000 tonnes)	23.1	42.1	18.9	81.9	89.7	86.9	-2.8	-3.2
<b>Value (U.S. \$000)</b>	<b>14471.0</b>	<b>28569.0</b>	<b>14098.0</b>	<b>97.4</b>	<b>57017.0</b>	<b>59999.0</b>	<b>2982.0</b>	<b>5.2</b>
Price (US \$/tonne)	625.8	679.3	53.5	8.5	635.3	690.3	55.0	8.7
<b>BANANAS</b>								
Volume ('000 tonnes)	3.3	0.0	-3.3	-100.0	12.8	0.0	-12.8	-100.0
<b>Value (U.S. \$000)</b>	<b>1379.0</b>	<b>0.0</b>	<b>-1379.0</b>	<b>-100.0</b>	<b>6021.0</b>	<b>0.0</b>	<b>-6021.0</b>	<b>-100.0</b>
Price (US \$/tonne)	419.9	0.0	-419.9	-100.0	470.5	0.0	-470.5	-100.0

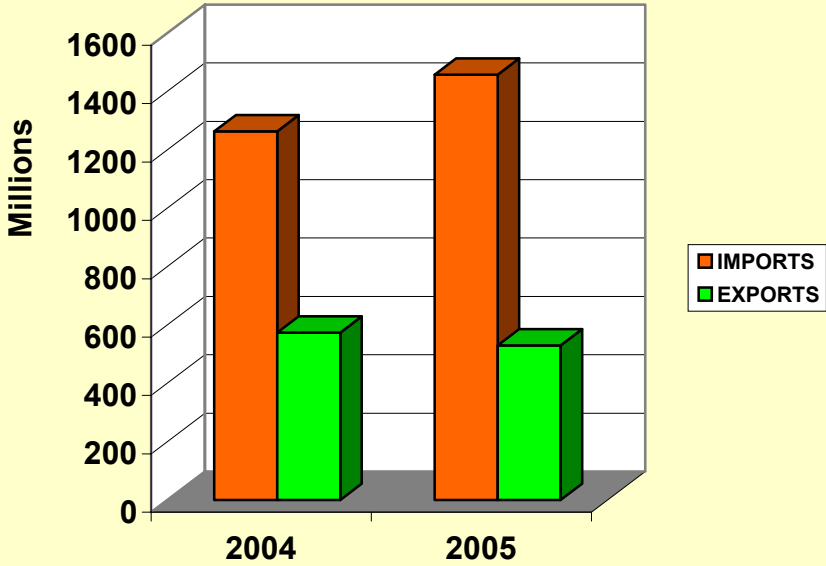
1/REVISED

2/PROVISIONAL

External Sector Statistics Unit.

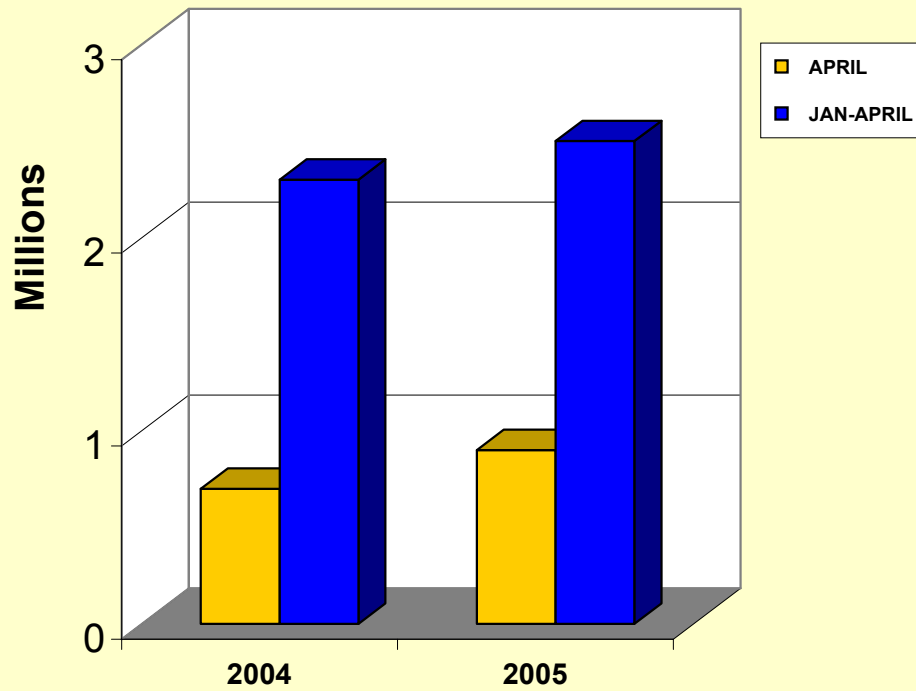
July 13, 2005

**VALUE OF IMPORTS & EXPORT US\$Mn**  
**JAN - APRIL**





**GARMENTS EXPORT US\$Mn**  
JAN - APRIL

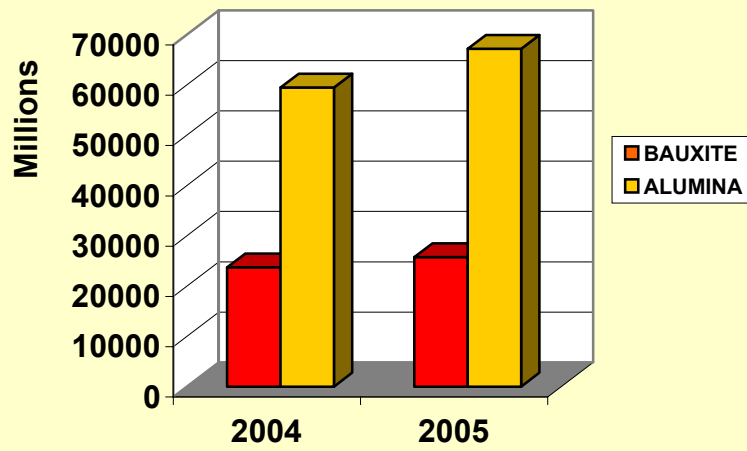




<b>BAUXITE</b>						
	<b>2004 Volumes (Tonnes)</b>	<b>2005 Volumes (Tonnes)</b>	<b>% Change</b>	<b>2004 Values (\$ 000')</b>	<b>2005 Values (\$ 000')</b>	<b>% Change</b>
JANUARY	375063.0	393019.0	4.8	9001.0	9566.0	6.3
FEBRUARY	230889.0	313182.0	35.6	5541.0	7623.0	37.6
MARCH	380995.0	351972.0	-7.6	9144.0	8567.0	-6.3
<b>JANUARY-MARCH</b>	<b>986947.0</b>	<b>1058173.0</b>	<b>7.2</b>	<b>23686.0</b>	<b>25756.0</b>	<b>8.7</b>
APRIL	425749.0	277541.0	-34.8	9963.0	6755.0	-32.2
<b>JAN-APRIL</b>	<b>1412696.0</b>	<b>1335714.0</b>	<b>-5.4</b>	<b>33649.0</b>	<b>32511.0</b>	<b>-3.4</b>
<b>ALUMINA</b>						
	<b>2004 Volumes (Tonnes)</b>	<b>2005 Volumes (Tonnes)</b>	<b>% Change</b>	<b>2004 Values (\$ 000')</b>	<b>2005 Values (\$ 000')</b>	<b>% Change</b>
JANUARY	353037.0	358434.0	1.5	73456.0	75332.0	2.6
FEBRUARY	340880.0	273943.0	-19.6	70926.0	57575.0	-18.8
MARCH	322755.0	325312.0	0.8	67156.0	68371.0	1.8
<b>JANUARY-MARCH</b>	<b>1016672.0</b>	<b>957689.0</b>	<b>-5.8</b>	<b>211538.0</b>	<b>201278.0</b>	<b>-4.9</b>
APRIL	419226.0	444643.0	6.1	83556.0	93183.0	11.5
<b>JAN-APRIL</b>	<b>1435898.0</b>	<b>1402332.0</b>	<b>-2.3</b>	<b>295094.0</b>	<b>294461.0</b>	<b>-0.2</b>

External Sector Statistics  
July 18, 2005

**BAUXITE/ALUMINA US\$Mn  
JAN-APRIL 2005**



EXPORTS OF SELECTED NON-TRADITIONAL DOMESTIC COMMODITIES US\$ 000

	2004	2005	%	2004	2005	%
	JAN-APR	JAN-APR		APR	APR	
<b>COMMODITIES</b>						
-----						
<b>FOOD</b>						
----						
ACKEE	3000.0	3438.0	14.6	994.0	724.0	-27.2
FISH	2712.0	2473.0	-8.8	678.0	1044.0	54.0
BREADFRUIT	375.0	300.0	-20.0	215.0	150.0	-30.2
CUCUMBERS	4.0	5.0	25.0	1.0	2.0	100.0
PUMPKINS	156.0	132.0	-15.4	20.0	27.0	35.0
OTHER VEGETABLES	33.0	38.0	15.2	16.0	8.0	-50.0
DASHEEN	432.0	284.0	-34.3	104.0	57.0	-45.2
CASSAVA	0.0	0.0	0.0	0.0	0.0	0.0
SWEET POTATOES	447.0	645.0	44.3	138.0	152.0	10.1
YAMS	4948.0	4565.0	-7.7	1025.0	1202.0	17.3
AVOCADOES	0.0	0.0	0.0	0.0	0.0	0.0
MANGOES	222.0	316.0	42.3	80.0	168.0	110.0
OTHER ROOTS	151.0	162.0	7.3	38.0	40.0	5.3
PAPAYAS	803.0	711.0	-11.5	190.0	295.0	55.3
MELON	0.0	0.0	0.0	0.0	0.0	0.0
<b>Total</b>	<b>13283.0</b>	<b>13069.0</b>	<b>-1.6</b>	<b>3499.0</b>	<b>3869.0</b>	<b>10.6</b>
<b>CRUDE MATERIALS</b>						
-----						
Cut Flowers	21.0	12.0	-42.9	5.0	3.0	-40.0
Live Plts.&Foliage	7.0	17.0	142.9	0.0	5.0	0.0
<b>Total</b>	<b>34.0</b>	<b>36.0</b>	<b>5.9</b>	<b>6.0</b>	<b>10.0</b>	<b>66.7</b>

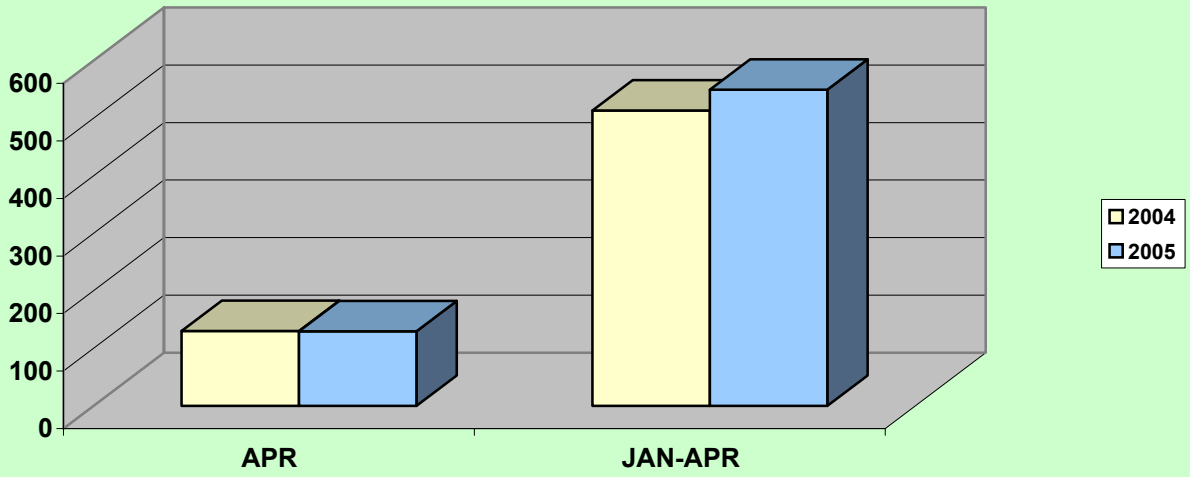
July 18, 2005

## TOURISM STATISTICS

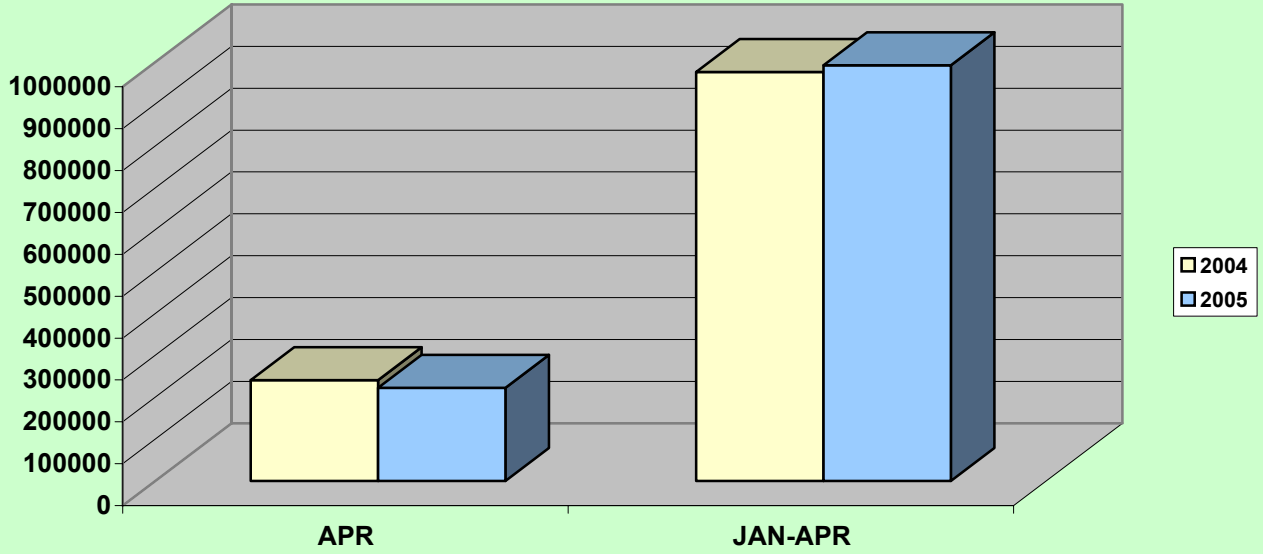
	2004 APR	2005 APR	% CHNG	2004 JAN-APR	2005 JAN-APR	% CHNG
<b>TOTAL STOP-OVERS</b>	<b>131101</b>	<b>123578</b>	<b>-5.7</b>	<b>497186</b>	<b>518547</b>	<b>4.3</b>
<b>FOREIGN NAT. STOP-OVERS(# of)</b>	<b>123841</b>	<b>117100</b>	<b>-5.4</b>	<b>474085</b>	<b>494141</b>	<b>4.2</b>
Long Stay	117066	113199	-3.3	447014	477319	6.8
Short Stay	6775	3901	-42.4	27071	16822	-37.9
NON-RES. JAMAICANS	7260	6478	-10.8	23101	24406	5.6
CRUISE PASSENGERS	109744	98654	-10.1	479011	473627	-1.1
<b>TOTAL TOURISTS</b>	<b>240845</b>	<b>222232</b>	<b>-7.7</b>	<b>976197</b>	<b>992174</b>	<b>1.6</b>
ARMED FORCES	0	0	-	0	0	-
<b>TOTAL VISITORS</b>	<b>240845</b>	<b>222232</b>	<b>-7.7</b>	<b>976197</b>	<b>992174</b>	<b>1.6</b>
AVG.LENGTH.OF STAY	8.7	9.0	3.4	9.0	9.0	0.3
<b>ESTM.EXPD.(US\$MN)</b>	<b>130.0</b>	<b>129.6</b>	<b>-0.3</b>	<b>513.5</b>	<b>549.5</b>	<b>7.0</b>
<b>Avg. Est.Exp/per person/per day (US\$)</b>						
Stop-Overs	109.8	112.2	2.2	109.8	112.2	2.2
A.forces/Cruise	75.2	84.0	11.7	75.2	84.0	11.7

*External Sector Statistics Unit  
Economic Information & Publications Dept.  
July 18, 2005*

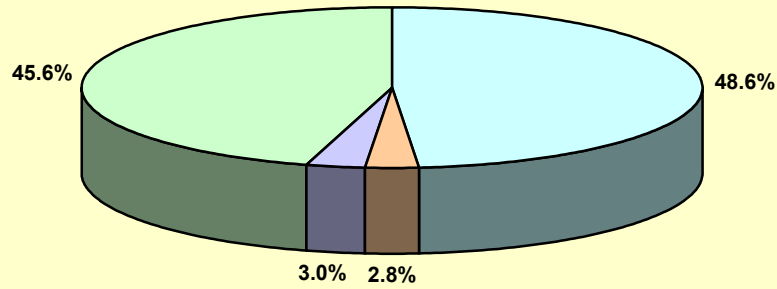
### Estimated Tourist Expenditure (US\$m)



### Jamaica: Total Visitors

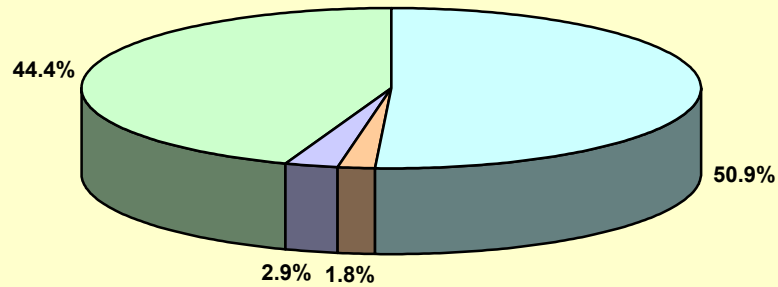


### Composition of Visitors April 2004



For. Nat. Long Stay For. Nat. Short Stay Non-Res. Jamaicans Cruise Passengers

### Composition of Visitors April 2005



For. Nat. Long Stay For. Nat. Short Stay Non-Res. Jamaicans Cruise Passengers

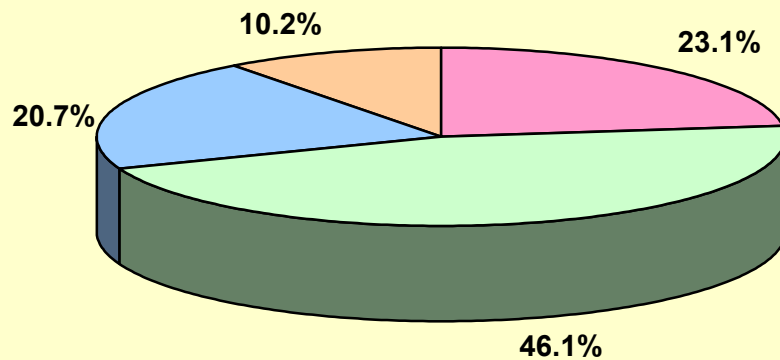
<b>TOURISM STATISTICS</b>				
	<b>2003/2004</b>	<b>2004/2005</b>		<b>%</b>
	<b>APR-MAR</b>	<b>APR-MAR</b>	<b>CHNG</b>	<b>CHNG</b>
<b>TOTAL STOP-OVERS</b>	<b>1374120</b>	<b>1443670</b>	<b>69550</b>	<b>5.1</b>
FOREIGN NAT. STOP-OVERS	1285894	1353715	67821	5.3
Long Stay	1209729	1288089	78360	6.5
Short Stay	76165	65626	-10539	-13.8
NON-RES. JAMAICANS	88226	89955	1729	2.0
CRUISE PASSENGERS	1137820	1105479	-32341	-2.8
<b>TOTAL TOURISTS</b>	<b>2511940</b>	<b>2549149</b>	<b>37209</b>	<b>1.5</b>
ARMED FORCES	745	0	-745	-100.0
<b>TOTAL VISITORS</b>	<b>2512685</b>	<b>2549149</b>	<b>36464</b>	<b>1.5</b>
AVG.LENGTH.OF STAY	10.1	10.0	-0.2	-1.7
<b>ESTM.EXPD.(US\$MN)</b>	<b>1400.9</b>	<b>1474.3</b>	<b>73.5</b>	<b>5.2</b>
<b>Avg. Est.Exp/per person/per day (US\$)</b>				
Stop-Overs	97.4	98.1	0.7	0.7
A.forces/Cruise	79.1	86.5	7.4	9.4
<i>External Sector Statistics Unit</i>				
<i>Economic Information &amp; Publications Dept.</i>				

**SOURCES OF PRIVATE TRANSFERS**  
(US\$m)

	<b>2004</b>	<b>2005</b>			<b>2004</b>	<b>2005</b>		
	<b>APR</b>	<b>APR</b>	<b>CHNG</b>	<b>%CHNG</b>	<b>JAN - APR</b>	<b>JAN - APR</b>	<b>CHNG</b>	<b>%CHNG</b>
<b>TOTAL INFLOWS</b>	<b>132.35</b>	<b>164.50</b>	<b>32.15</b>	<b>24.29</b>	<b>527.35</b>	<b>670.85</b>	<b>143.50</b>	<b>27.21</b>
COMMERCIAL BANKS	30.56	46.63	16.07	52.59	127.20	170.43	43.23	33.99
REMITTANCE COMPS.	60.95	75.13	14.18	23.26	235.89	276.27	40.39	17.12
POST OFFICE	0.10	0.11	0.01	5.00	0.40	0.42	0.02	5.00
BUILDING SOCIETIES	27.34	26.96	-0.38	-1.39	110.26	100.72	-9.54	-8.65
OTHER	13.40	15.68	2.28	17.01	53.60	123.00	69.40	129.47

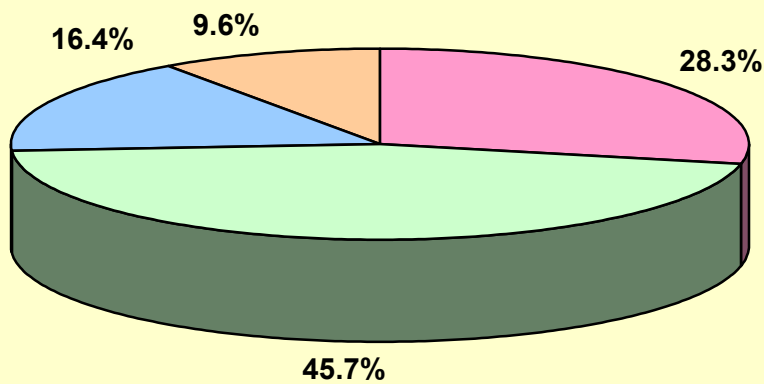


**Sources of Private Transfers (US\$m)**  
**April 2004**



Commercial Banks Remittance Companies Building Societies Other

**Sources of Private Transfers (US\$m)**  
**April 2005**



Commercial Banks Remittance Companies Building Societies Other

**Balance of Payments of Jamaica**

US\$Mn.

	<b>April 2004</b>	<b>April 2005</b>	<b>Change</b>
<b>1. Current Account</b>	<b>27.8</b>	<b>-42.2</b>	<b>-70.0</b>
<b>A. Goods Balance</b>	<b>-109.7</b>	<b>-180.5</b>	<b>-70.8</b>
Exports	154.4	164.1	9.7
Imports	264.1	344.6	80.5
<b>B. Services Balance</b>	<b>68.6</b>	<b>50.5</b>	<b>-18.1</b>
Transportation	<b>-3.3</b>	<b>-20.1</b>	<b>-16.8</b>
Travel	107.9	107.5	-0.4
Other Services	-36.0	-36.9	-0.9
<b>C. Income</b>	<b>-40.9</b>	<b>-44.4</b>	<b>-3.5</b>
Compensation of employees	2.2	2.2	0.0
Investment Income	-43.1	-46.6	-3.5
<b>D. Current Transfers</b>	<b>109.8</b>	<b>132.2</b>	<b>22.4</b>
Official	8.9	8.9	0.0
Private	100.9	123.3	22.4
<b>2. Capital &amp; Financial Account</b>	<b>-27.8</b>	<b>42.2</b>	<b>70.0</b>
<b>A. Capital Account</b>	<b>0.2</b>	<b>-1.1</b>	<b>-1.3</b>
Capital Transfers	0.2	-1.1	-1.3
Official	1.1	0.0	-1.1
Private	-0.9	-1.1	-0.2
Acq/dis. of non-produced non-fin. assets	<b>0.0</b>	<b>0.0</b>	<b>0.0</b>
<b>B. Financial Account</b>	<b>-28.0</b>	<b>43.3</b>	<b>71.3</b>
Other Official Investment	114.6	-11.3	-125.9
Other Private Investment(incl. Errors & omissions)	30.4	227.6	197.2
Reserves	-173.0	-173.0	
Govt. Reserves			

*External Sector Statistics Unit*

*Economic Information & Publications Dept.*

*July 20, 2005*

<b>Balance of Payments of Jamaica</b>			
<b>US\$Mn.</b>			
	<b>April 2004</b>	<b>April 2005</b>	<b>Change</b>
<b>Services (Net)</b>	<b>68.6</b>	<b>50.5</b>	<b>-18.1</b>
Inflows	208.6	204.0	-4.6
Outflows	140.0	153.5	13.5
<b>Transportation</b>	<b>-3.3</b>	<b>-20.1</b>	<b>-16.8</b>
Inflows	47.6	43.5	-4.1
Outflows	50.9	63.6	12.7
<b>Travel</b>	<b>107.9</b>	<b>107.5</b>	<b>-0.4</b>
Inflows	130.0	129.6	-0.4
Outflows	22.1	22.1	0.0
<b>Other Services</b>	<b>-36.0</b>	<b>-36.9</b>	<b>-0.9</b>
Inflows	31.0	30.9	-0.1
Outflows	67.0	67.8	0.8
<b>Income (Net)</b>	<b>-40.9</b>	<b>-44.4</b>	<b>-3.5</b>
<b>Compensation of Employees</b>	<b>2.2</b>	<b>2.2</b>	<b>0.0</b>
Inflows	6.0	6.0	0.0
Outflows	3.8	3.8	0.0
<b>Investment Income</b>	<b>-43.1</b>	<b>-46.6</b>	<b>-3.5</b>
Inflows	10.4	12.2	1.8
Outflows	53.5	58.8	5.3
- Bank of Jamaica	0.00	0.00	0.00
- Government Direct	6.8	7.1	0.3
- Government Guaranteed	0.0	0.0	0.0
- Private	0.0	1.6	1.6
- Direct Investment	35.3	38.6	3.3
- Other	11.5	11.5	0.0
<b>Current Transfers (Net)</b>	<b>109.8</b>	<b>132.2</b>	<b>22.4</b>
Inflows	141.6	174.0	32.4
Outflows	31.8	41.8	10.0
<b>Official</b>	<b>8.9</b>	<b>8.9</b>	<b>0.0</b>
Inflows	9.2	9.5	0.3
Outflows	0.3	0.6	0.3
<b>Private</b>	<b>100.9</b>	<b>123.3</b>	<b>22.4</b>
Inflows	132.4	164.5	32.1
Outflows	31.5	41.2	9.7

	Balance of Payments of Jamaica		
	US\$Mn.		
	April 2005	April 2005	Change
<b>Capital &amp; Financial Account (Net)</b>	<b>-27.8</b>	<b>42.2</b>	<b>70.0</b>
<b>Capital Account (Net)</b>	<b>0.2</b>	<b>-1.1</b>	<b>-1.3</b>
<b>1. Capital Transfers</b>	<b>0.2</b>	<b>-1.1</b>	<b>-1.3</b>
<b>Official</b>	<b>1.1</b>	<b>0.0</b>	<b>-1.1</b>
Inflows	1.1	0.0	-1.1
Outflows	0.0	0.0	0.0
<b>Private</b>	<b>-0.9</b>	<b>-1.1</b>	<b>-0.2</b>
Inflows	1.9	1.7	-0.2
Outflows	2.8	2.8	0.0
<b>2. Acq/disp. of non-produced non-fin. assets</b>	<b>0.0</b>	<b>0.0</b>	<b>0.0</b>
Inflows	0.0	0.0	0.0
Outflows	0.0	0.0	0.0
<b>Financial Account (Net)</b>	<b>-28.0</b>	<b>43.3</b>	<b>71.3</b>
<b>Other Official Investments</b>	<b>114.6</b>	<b>-11.3</b>	<b>-125.9</b>
Inflows	129.3	3.8	-125.5
Outflows	14.7	15.1	0.4
<b>Other Private Investments (incl.errors &amp; omissions)</b>	<b>30.4</b>	<b>227.6</b>	<b>197.2</b>
Inflows	207.0	435.2	228.2
Outflows	176.6	207.6	31.0
<b>Reserves</b>	<b>-173.0</b>	<b>-173.0</b>	
<b>Govt. Reserves</b>			

**BALANCE OF PAYMENTS OF JAMAICA  
US\$MN**

	Jan-Feb 2004	Jan-Feb 1/ 2005	Change	Mar 2004	Mar 1/ 2005	Change	Jan-Mar 2004	Jan-Mar 1/ 2005	Change	April 2004	April 1/ 2005	Change	Jan-Apr 2004	Jan-Apr 1/ 2005	Change
<b>1. Current Account</b>	<b>-24.0</b>	<b>-94.1</b>	<b>-70.1</b>	<b>2.7</b>	<b>21.2</b>	<b>18.5</b>	<b>-21.3</b>	<b>-72.9</b>	<b>-51.6</b>	<b>27.8</b>	<b>-42.2</b>	<b>-70.0</b>	<b>6.5</b>	<b>-115.1</b>	<b>-121.6</b>
<b>A. Goods Balance</b>	<b>-261.3</b>	<b>-351.6</b>	<b>-90.3</b>	<b>-149.6</b>	<b>-198.0</b>	<b>-48.4</b>	<b>-410.9</b>	<b>-549.6</b>	<b>-138.7</b>	<b>-109.7</b>	<b>-180.5</b>	<b>-70.8</b>	<b>-520.6</b>	<b>-730.1</b>	<b>-209.5</b>
Exports	269.4	241.9	-27.5	157.6	129.6	-28.0	427.0	371.5	-55.5	154.4	164.1	9.7	581.4	535.6	-45.8
Imports	530.7	593.5	62.8	307.2	327.6	20.4	837.9	921.1	83.2	264.1	344.6	80.5	1102.0	1265.7	163.7
<b>B. Services Balance</b>	<b>128.6</b>	<b>139.9</b>	<b>11.3</b>	<b>75.7</b>	<b>96.5</b>	<b>20.8</b>	<b>204.3</b>	<b>236.4</b>	<b>32.1</b>	<b>68.6</b>	<b>50.5</b>	<b>-18.1</b>	<b>272.9</b>	<b>286.9</b>	<b>14.0</b>
Transportation	-9.3	-19.4	-10.1	-4.8	-3.5	1.3	-14.1	-22.9	-8.8	-3.3	-20.1	-16.8	-17.4	-43.0	-25.6
Travel	208.1	229.2	21.1	117.1	140.1	23.0	325.2	369.3	44.1	107.9	107.5	-0.4	433.1	476.8	43.7
Other Services	-70.2	-69.9	0.3	-36.6	-40.1	-3.5	-106.8	-110.0	-3.2	-36.0	-36.9	-0.9	-142.8	-146.9	-4.1
<b>C. Income</b>	<b>-107.4</b>	<b>-129.5</b>	<b>-22.1</b>	<b>-40.9</b>	<b>-24.2</b>	<b>16.7</b>	<b>-148.3</b>	<b>-153.7</b>	<b>-5.4</b>	<b>-40.9</b>	<b>-44.4</b>	<b>-3.5</b>	<b>-189.2</b>	<b>-198.1</b>	<b>-8.9</b>
Compensation of employees	3.5	3.1	-0.4	1.3	3.6	2.3	4.8	6.7	1.9	2.2	2.2	0.0	7.0	8.9	1.9
Investment Income	-110.9	-132.6	-21.7	-42.2	-27.8	14.4	-153.1	-160.4	-7.3	-43.1	-46.6	-3.5	-196.2	-207.0	-10.8
<b>D. Current Transfers</b>	<b>216.1</b>	<b>247.1</b>	<b>31.0</b>	<b>117.5</b>	<b>146.9</b>	<b>29.4</b>	<b>333.6</b>	<b>394.0</b>	<b>60.4</b>	<b>109.8</b>	<b>132.2</b>	<b>22.4</b>	<b>443.4</b>	<b>526.2</b>	<b>82.8</b>
General Government	18.1	22.8	4.7	9.4	15.5	6.1	27.5	38.3	10.8	8.9	8.9	0.0	36.4	47.2	10.8
Other Sector	198.0	224.3	26.3	108.1	131.4	23.3	306.1	355.7	49.6	100.9	123.3	22.4	407.0	479.0	72.0
<b>2. Capital &amp; Financial Account</b>	<b>24.0</b>	<b>94.1</b>	<b>70.1</b>	<b>-2.7</b>	<b>-21.2</b>	<b>-18.5</b>	<b>21.3</b>	<b>72.9</b>	<b>51.6</b>	<b>-27.8</b>	<b>42.2</b>	<b>70.0</b>	<b>-6.5</b>	<b>115.1</b>	<b>121.6</b>
<b>A. Capital Account</b>	<b>-0.6</b>	<b>-1.8</b>	<b>-1.2</b>	<b>0.2</b>	<b>-1.2</b>	<b>-1.4</b>	<b>-0.4</b>	<b>-3.0</b>	<b>-2.6</b>	<b>0.2</b>	<b>-1.1</b>	<b>-1.3</b>	<b>-0.2</b>	<b>-4.1</b>	<b>-3.9</b>
<b>Capital Transfers</b>	<b>-0.6</b>	<b>-1.8</b>	<b>-1.2</b>	<b>0.2</b>	<b>-1.2</b>	<b>-1.4</b>	<b>-0.4</b>	<b>-3.0</b>	<b>-2.6</b>	<b>0.2</b>	<b>-1.1</b>	<b>-1.3</b>	<b>-0.2</b>	<b>-4.1</b>	<b>-3.9</b>
General Government	2.2	0.1	-2.1	1.2	0.0	-1.2	3.4	0.1	-3.3	1.1	0.0	-1.1	4.5	0.1	-4.4
Other Sector	-2.8	-1.9	0.9	-1.0	-1.2	-0.2	-3.8	-3.1	0.7	-0.9	-1.1	-0.2	-4.7	-4.2	0.5
<b>Acq/dis. of non-produced non-fin. assets</b>	<b>0.0</b>	<b>0.0</b>	<b>0.0</b>	<b>0.0</b>	<b>0.0</b>	<b>0.0</b>	<b>0.0</b>	<b>0.0</b>	<b>0.0</b>	<b>0.0</b>	<b>0.0</b>	<b>0.0</b>	<b>0.0</b>	<b>0.0</b>	<b>0.0</b>
<b>B. Financial Account</b>	<b>24.6</b>	<b>95.9</b>	<b>71.3</b>	<b>-2.9</b>	<b>-20.0</b>	<b>-17.1</b>	<b>21.7</b>	<b>75.9</b>	<b>54.2</b>	<b>-28.0</b>	<b>43.3</b>	<b>71.3</b>	<b>-6.3</b>	<b>119.2</b>	<b>125.5</b>
Other Official Investment	220.0	-21.0	-241.0	33.5	-25.6	-59.1	253.5	-46.6	-300.1	114.6	-11.3	-125.9	368.1	-57.9	-426.0
Other Private Investment (incl.errors & omissions)	113.6	89.5	-24.1	58.3	76.1	17.8	171.9	165.6	-6.3	30.4	227.6	197.2	202.3	393.2	190.9
Reserves	-309.0	27.4		-94.7	-70.5		-403.7	-43.1		-173.0	-173.0		-576.7	-216.1	
Govt. Reserves															

1/Provisional

