



THE BALANCE OF PAYMENTS

REMITTANCE REPORT April 2016

**International Accounts Unit
Economic Information & Publications Department
RESEARCH AND ECONOMIC PROGRAMMING DIVISION**



THE BALANCE OF PAYMENTS

REMITTANCE REPORT April 2016

International Accounts Unit
Economic Information & Publications Department
RESEARCH AND ECONOMIC PROGRAMMING DIVISION
BANK OF JAMAICA
P.O. BOX 621
Kingston, Jamaica

Copyright © 2016

Bank of Jamaica
Nethersole Place
P.O. Box 621
Kingston, Jamaica, W.I.
All rights reserved

The material in this publication is copyrighted. Copying and/or transmitting portions or all of this work without permission may be a violation of applicable law. The Bank of Jamaica encourages dissemination of its work and will normally grant permission promptly to reproduce portions of the work.

For permission to photocopy or reprint any part of this work, please send a request to Economic Information and Publications Department, Bank of Jamaica, Nethersole Place, P.O. Box 621, Kingston, Jamaica, Telephone: (876) 922-0750-9, Fax: (876) 967-4265, Email: library@boj.org.jm.

ISSN 0799-3285

Printed in Jamaica

TABLE OF CONTENTS

	Pages
Overview	1
Current Remittances	3
Historical Remittances	5
Selected Indicators	9
Remittances: Selected Countries	10
Remittances Inflows by Source Country	11
Remittance Outflows by Recipient Country	12
Graphs	
1. Historical Trend in Remittance Inflows: April 2007-2016.....	1
2. Historical Trend in Remittance Inflows: Jan-April 2007-2016.....	2
3. Remittance Growth Rates 2014-2016.....	13
4. Percentage Contribution of Remittance Inflows by Source Country.....	13

This page was intentionally left blank

Overview

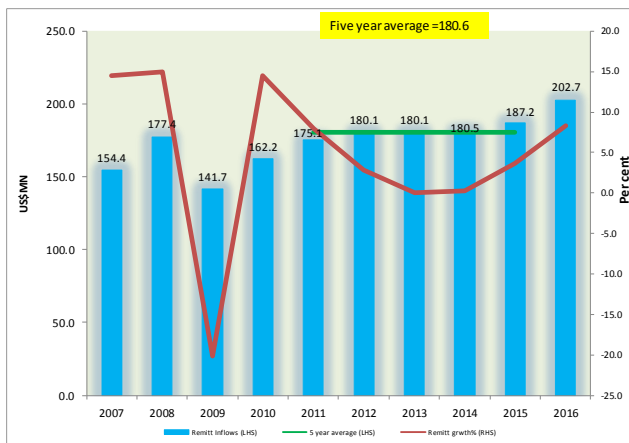
Table 1

JAMAICA'S REMITTANCES (US\$MN)				
	April 2015	April 2016*	Change	% Change**
Total Remittance Inflows	187.2	202.7	15.5	8.3
Remittance Companies^	160.7	173.8	13.0	8.1
Other Remittances	26.4	28.9	2.5	9.4
Total Remittance Outflows	20.9	19.2	-1.7	-8.1
Net Remittances	166.3	183.5	17.2	10.4

* Provisional
** Growth relative to the corresponding period of the previous year
^ Flows through Remittance Companies

Source: Bank of Jamaica

Graph 1
Historical Trend in Remittance Inflows
April 2007-2015



Source: Bank of Jamaica

April 2016

For April 2016, net remittances were **US\$183.5 million**, an increase of **US\$17.2 million** or **10.4 per cent** relative to the corresponding month of 2015 (Table 1). The growth in net remittance inflows reflected an increase in gross remittance inflows as well as a contraction in remittance outflows.

Gross remittance inflows for the month were **US\$202.7 million**, an increase of **US\$15.5 million** or **8.3 per cent** relative to the corresponding month of the previous year. These inflows were above the average of **US\$180.6 million** for the previous five corresponding periods (Graph 1). The expansion in total remittance inflows emanated from increases of **US\$13.0 million** and **US\$2.5 million** in flows through *Remittance Companies* and *Other Remittances*, respectively (Table 1).

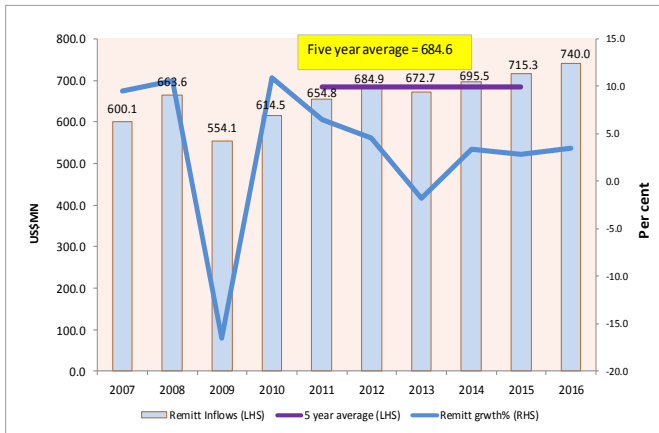
Table 2

JAMAICA'S REMITTANCES (US\$MN)				
	Jan-April 2015	Jan-April 2016*	Change	% Change**
Total Remittance Inflows	715.3	740.0	24.7	3.5
Remittance Companies^	611.2	634.2	23.1	3.8
Other Remittances	104.1	105.7	1.6	1.6
Total Remittance Outflows	78.1	80.4	2.3	2.9
Net Remittances	637.2	659.6	22.4	3.5

+ Revised
* Provisional
** Growth relative to the corresponding period of the previous year
^ Flows through Remittance Companies

Source: Bank of Jamaica

Graph 2
Historical Trend in Remittance Inflows
Jan - April 2007-2016



Source: Bank of Jamaica

January to April 2016

Net remittances for the first four months of 2016 were **US\$659.6 million**, which represented a growth of **US\$22.4 million** or **3.5 per cent** relative to 2015 (Table 2). The outturn for the review period reflected an increase in gross inflows, partially offset by a growth in outflows.

For the review period, total remittance inflows were **US\$740.0 million**, an increase of **US\$24.7 million** or **3.5 per cent**. These inflows were above the average of **US\$684.6 million** for the previous five corresponding periods (Graph 2) and above the corresponding pre-crisis outturn for 2008.

The increase in total remittance inflows reflected an increase of **US\$23.1 million** in inflows through **Remittance Companies** and a marginal increase of **US\$1.6 million** in flows via **Other Remittances**.

Table 3

Jamaica's Remittances US\$ Millions				
	2015 April	2016* April	Change	% Change**
Remittance Inflows				
Remittance Companies^	160.7	173.8	13.0	8.1
Other Remittances	26.4	28.9	2.5	9.4
Total Remittance Inflows	187.2	202.7	15.5	8.3
Total Remittance Outflows	20.9	19.2	-1.7	-8.1
Net Remittances	166.3	183.5	17.2	10.4
* Provisional				
** Growth relative to the corresponding period of the previous year.				
^ Flows through Remittance Companies				
International Accounts Unit <i>Economic Information & Publications Dept. Research & Economic Programming Division Bank of Jamaica</i>				

Table 4

Jamaica's Remittances US\$ Millions				
	2015 Jan-April	2016* Jan-April	Change	% Change**
Remittance Inflows				
Remittance Companies [^]	611.2	634.2	23.1	3.8
Other Remittances	104.1	105.7	1.6	1.6
Total Remittance Inflows	715.3	740.0	24.7	3.5
Total Remittance Outflows	78.1	80.4	2.3	2.9
Net Remittances	637.2	659.6	22.4	3.5
* Provisional				
** Growth relative to the corresponding period of the previous year.				
[^] Flows through Remittance Companies				
International Accounts Unit Economic Information & Publications Dept. Research & Economic Programming Division Bank of Jamaica				

Table 5

Jamaica's Historical Remittances (Calendar Year)													
US\$ Millions													
	Jan	Feb	Mar	Apr	May	Jun	Jul	Aug	Sept	Oct	Nov	Dec	TOTAL
Remittance Companies													
2012	126.1	142.4	162.5	153.4	141.9	151.3	145.0	146.4	140.1	141.3	137.1	170.5	1758.2
2013	129.3	132.5	155.1	148.8	149.9	143.4	148.3	154.6	140.2	146.9	142.7	168.9	1760.6
2014	134.9	143.1	160.9	154.2	162.6	149.8	155.8	160.0	155.2	154.9	143.0	181.5	1855.8
2015*	139.3	144.8	166.4	160.7	169.1	166.0	167.1	162.4	160.7	166.7	145.9	186.0	1935.0
2016*	136.7	151.8	171.9	173.8									634.2
<i>month/month growth rate (%):2015/2016</i>	<i>-1.8</i>	<i>4.9</i>	<i>3.3</i>	<i>8.1</i>									
<i>CYTD growth rate (%):2015/2016</i>	<i>-1.8</i>	<i>1.6</i>	<i>2.2</i>	<i>3.8</i>									
Other Remittances													
2012	23.6	24.8	25.3	26.7	24.7	23.8	23.9	23.8	19.3	22.1	20.7	25.7	284.3
2013	24.7	27.7	23.3	31.3	31.7	22.7	22.2	23.1	23.2	23.9	25.1	25.6	304.4
2014*	24.4	25.3	26.4	26.3	26.1	18.5	27.3	23.9	26.9	24.7	27.9	23.5	301.2
2015	26.9	23.1	27.7	26.4	20.3	22.5	23.0	23.2	22.7	24.9	25.4	24.9	291.0
2016	23.5	28.3	25.0	28.9									105.7
<i>month/month growth rate (%):2015/2016</i>	<i>-12.6</i>	<i>22.8</i>	<i>-9.8</i>	<i>9.4</i>									
<i>CYTD growth rate (%):2015/2016</i>	<i>-12.6</i>	<i>3.7</i>	<i>-1.1</i>	<i>1.6</i>									
Total Remittance Inflows													
2012	149.7	167.2	187.9	180.1	166.7	175.2	168.9	170.1	159.4	163.4	157.8	196.2	2042.5
2013	154.0	160.1	178.4	180.1	181.5	166.0	170.5	177.8	163.4	170.7	167.8	194.5	2064.9
2014	159.3	168.3	187.3	180.5	188.7	168.3	183.2	183.9	182.0	179.7	170.8	204.9	2157.0
2015*	166.2	167.8	194.0	187.2	189.4	188.4	190.0	185.6	183.4	191.7	171.3	210.9	2226.0
2016*	160.3	180.1	196.9	202.7									740.0
<i>month/month growth rate (%):2015/2016</i>	<i>-3.6</i>	<i>7.3</i>	<i>1.5</i>	<i>8.3</i>									
<i>CYTD growth rate (%):2015/2016</i>	<i>-3.6</i>	<i>1.9</i>	<i>1.7</i>	<i>3.5</i>									
Total Remittance Outflows													
2012	23.4	22.4	22.3	21.3	24.3	22.1	22.5	22.3	18.4	22.1	21.8	24.5	267.4
2013	24.2	19.3	17.6	20.3	19.7	20.3	20.9	22.3	18.5	18.5	18.4	20.6	240.5
2014	19.3	16.5	16.4	21.1	17.1	14.8	22.1	20.4	19.9	19.4	19.5	20.8	227.3
2015*	18.9	18.7	19.6	20.9	14.3	15.2	22.1	21.0	19.7	20.4	19.6	22.4	232.8
2016*	22.3	19.0	19.8	19.2									80.4
<i>month/month growth rate (%):2015/2016</i>	<i>18.2</i>	<i>1.7</i>	<i>1.1</i>	<i>-8.1</i>									
<i>CYTD growth rate (%):2015/2016</i>	<i>18.2</i>	<i>10.0</i>	<i>7.0</i>	<i>2.9</i>									
Net Remittances													
2009	113.2	116.9	126.3	126.7	130.2	133.5	125.5	134.3	133.0	134.7	121.8	156.7	1552.9
2010	121.1	127.1	153.0	141.1	134.0	136.0	134.6	133.8	138.0	135.1	129.5	174.7	1658.1
2011	124.7	138.8	157.8	152.3	142.3	145.1	149.7	148.9	148.9	143.7	132.6	172.3	1757.0
2012	126.3	144.8	165.6	158.8	142.4	153.1	146.4	147.9	141.0	141.2	136.0	171.7	1775.0
2013	129.8	140.8	160.8	159.9	161.9	145.7	149.6	155.5	144.8	152.3	149.4	173.9	1824.4
2014	140.0	151.8	170.9	159.4	171.6	153.6	161.1	163.5	162.2	160.3	151.4	184.2	1929.8
2015*	147.4	149.1	174.4	166.3	175.1	173.3	167.9	164.6	163.7	171.3	151.6	188.6	1993.2
2016*	138.0	161.1	177.0	183.5									659.6
<i>month/month growth rate (%):2015/2016</i>	<i>-6.4</i>	<i>8.0</i>	<i>1.5</i>	<i>10.4</i>									
<i>CYTD growth rate (%):2015/2016</i>	<i>-6.4</i>	<i>0.9</i>	<i>1.1</i>	<i>3.5</i>									
* Provisional International Accounts Unit Economic Information & Publications Dept. Research & Economic Programming Division Bank of Jamaica													

Table 6

Jamaica's Historical Remittances (Fiscal Year)													
US\$ Millions													
	Apr	May	Jun	Jul	Aug	Sept	Oct	Nov	Dec	Jan	Feb	Mar	TOTAL
Remittance Companies													
2012/2013	153.4	141.9	151.3	145.0	146.4	140.1	141.3	137.1	170.5	129.3	132.5	155.1	1743.9
2013/2014	148.8	149.9	143.4	148.3	154.6	140.2	146.9	142.7	168.9	134.9	143.1	160.9	1782.6
2014/2015	154.2	162.6	149.8	155.8	160.0	155.2	154.9	143.0	181.5	139.3	144.8	166.4	1867.4
2015/2016*	160.7	169.1	166.0	167.1	162.4	160.7	166.7	145.9	186.0	136.7	151.8	171.9	1945.0
2016/2017*	173.8												173.8
<i>month/month growth rate (%):2015/2016</i>	<i>8.1</i>												
<i>FYTD/FYTD growth rate (%)</i>	<i>8.1</i>												
Other Remittances													
2012/2013	26.7	24.7	23.8	23.9	23.8	19.3	22.1	20.7	25.7	24.7	27.7	23.3	286.2
2013/2014	31.3	31.7	22.7	22.2	23.1	23.2	23.9	25.1	25.6	24.4	25.3	26.4	304.8
2014/2015	26.3	26.1	18.5	27.3	23.9	26.9	24.7	27.9	23.5	26.9	23.1	27.7	302.8
2015/2016*	26.4	20.3	22.5	23.0	23.2	22.7	24.9	25.4	24.9	23.5	28.3	25.0	290.1
2016/2017*	28.9												28.9
<i>month/month growth rate (%):2015/2016</i>	<i>9.4</i>												
<i>FYTD/FYTD growth rate (%)</i>	<i>9.4</i>												
Total Remittance Inflows													
2012/2013	180.1	166.7	175.2	168.9	170.1	159.4	163.4	157.8	196.2	154.0	160.1	178.4	2030.2
2013/2014	180.1	181.5	166.0	170.5	177.8	163.4	170.7	167.8	194.5	159.3	168.3	187.3	2087.3
2014/2015	180.5	188.7	168.3	183.2	183.9	182.0	179.7	170.8	204.9	166.2	167.8	194.0	2170.2
2015/2016*	187.2	189.4	188.4	190.0	185.6	183.4	191.7	171.3	210.9	160.3	180.1	196.9	2235.2
2016/2017*	202.7												202.7
<i>month/month growth rate (%):2015/2016</i>	<i>8.3</i>												
<i>FYTD/FYTD growth rate (%)</i>	<i>8.3</i>												
Total Remittance Outflows													
2012/2013	21.3	24.3	22.1	22.5	22.3	18.4	22.1	21.8	24.5	24.2	19.3	17.6	260.4
2013/2014	20.3	19.7	20.3	20.9	22.3	18.5	18.5	18.4	20.6	19.3	16.5	16.4	231.7
2014/2015	21.1	17.1	14.8	22.1	20.4	19.9	19.4	19.5	20.8	18.9	18.7	19.6	232.2
2015/2016*	20.9	14.3	15.2	22.1	21.0	19.7	20.4	19.6	22.4	22.3	19.0	19.8	236.8
2016/2017*	19.2												19.2
<i>month/month growth rate (%):2015/2016</i>	<i>-8.1</i>												
<i>FYTD/FYTD growth rate (%)</i>	<i>-8.1</i>												
Net Remittances													
2012/2013	158.8	142.4	153.1	146.4	147.9	141.0	141.2	136.0	171.7	129.8	140.8	160.8	1769.8
2013/2014	159.9	161.9	145.7	149.6	155.5	144.8	152.3	149.4	173.9	140.0	151.8	170.9	1855.7
2014/2015	159.4	171.6	153.6	161.1	163.5	162.2	160.3	151.4	184.2	147.4	149.1	174.4	1938.0
2015/2016*	166.3	175.1	173.3	167.9	164.6	163.7	171.3	151.6	188.6	138.0	161.1	177.0	1998.4
2016/2017*	183.5												183.5
<i>month/month growth rate (%):2015/2016</i>	<i>10.4</i>												
<i>FYTD/FYTD growth rate (%)</i>	<i>10.4</i>												
* Provisional International Accounts Unit Economic Information & Publications Dept. Research & Economic Programming Division Bank of Jamaica													

Table 7

Jamaica's Historical Remittances (US\$MN)					
	2011	2012	2013	2014	2015
Remittance Companies	1714.8	1758.2	1760.6	1855.8	1935.0
Other Remittances	303.7	284.3	304.4	301.2	291.0
Total Remittance Inflows	2018.5	2042.6	2064.9	2157.0	2226.0
Total Remittance Outflows	261.4	267.4	240.5	227.3	232.8
Net Remittances	1757.1	1775.1	1824.4	1929.8	1993.2

International Accounts Unit
Economic Information & Publications Dept.
Research & Economic Programming Division
Bank of Jamaica

Table 8

Jamaica's Historical Remittances (by quarters)				
US\$ Millions				
	Jan-Mar	Apr-Jun	Jul-Sept	Oct-Dec
Remittance Companies				
2013	416.8	442.1	443.2	458.4
2014	438.8	466.6	471.0	479.4
2015*	450.4	495.8	490.1	498.6
2016*	460.4			
<i>quarter/quarter growth rate (%):2014/2013</i>	5.3	5.6	6.3	4.6
<i>quarter/quarter growth rate (%):2015/2014</i>	2.6	6.3	4.1	4.0
<i>quarter/quarter growth rate (%):2016/2015</i>	2.2			
Other Remittances				
2013	75.7	85.6	68.5	74.6
2014	76.1	71.0	78.1	76.1
2015*	77.7	69.2	68.9	75.2
2016*	76.8			
<i>quarter/quarter growth rate (%):2014/2013</i>	0.5	-17.1	14.1	2.0
<i>quarter/quarter growth rate (%):2015/2014</i>	2.1	-2.5	-11.8	-1.1
<i>quarter/quarter growth rate (%):2016/2015</i>	-1.1			
Total Remittance Inflows				
2013	492.5	527.7	511.7	533.0
2014	514.9	537.6	549.1	555.4
2015*	528.1	565.0	559.0	573.9
2016*	537.3			
<i>quarter/quarter growth rate (%):2014/2013</i>	4.5	1.9	7.3	4.2
<i>quarter/quarter growth rate (%):2015/2014</i>	2.6	5.1	1.8	3.3
<i>quarter/quarter growth rate (%):2016/2015</i>	1.7			
Total Remittance Outflows				
2013	61.1	60.2	61.7	57.4
2014	52.2	53.0	62.4	59.6
2015*	57.2	50.4	62.8	62.4
2016*	61.2			
<i>quarter/quarter growth rate (%):2014/2013</i>	-14.5	-12.0	1.1	3.8
<i>quarter/quarter growth rate (%):2015/2014</i>	9.5	-4.9	0.6	4.7
<i>quarter/quarter growth rate (%):2016/2015</i>	7.0			
Net Remittances				
2013	431.4	467.5	449.9	475.6
2014	462.7	484.6	486.7	495.8
2015*	470.9	514.6	496.2	511.5
2016*	476.1			
<i>quarter/quarter growth rate (%):2014/2013</i>	7.2	3.7	8.2	4.3
<i>quarter/quarter growth rate (%):2015/2014</i>	1.8	6.2	2.0	3.2
<i>quarter/quarter growth rate (%):2016/2015</i>	1.1			
* Provisional				
International Accounts Unit Economic Information & Publications Dept. Research & Economic Programming Division Bank of Jamaica				

Table 9

SELECTED INDICATORS								
	2008	2009	2010	2011	2012	2013	2014+	2015*
REMITTANCE INFLOWS (US\$Mn)	2,021.3	1,790.3	1,906.2	2,018.4	2,042.6	2,064.9	2,157.0	2,226.0
TOURISM EXPENDITURE (US\$Mn)	1,975.8	1,925.5	2,001.2	2,002.5	2,069.5	2,073.9	2,255.2	2,400.6
EXPORTS (US\$Mn)	2,743.9	1,387.7	1,330.9	1,623.7	1,728.5	1,580.5	1,448.6	1,266.6
FDI INFLOWS (US\$Mn)	1,436.6	540.9	227.7	218.2	413.7	529.9	564.6	899.2
IMPORTS (US\$Mn)	8,524.8	5,138.5	5,262.6	6,517.5	6,408.6	6,204.6	5,914.3	5,032.0
GDP (US\$Mn)	13,678.5	12,043.4	13,206.5	14,417.7	14,746.0	14,187.4	13,891.4	13,787.3
Ratios (%)	2008	2009	2010	2011	2012	2013	2014+	2015*
Remittance/Population (US\$) (Per Capita)	751.8	663.8	706.0	745.6	753.7	759.2	793.0	818.4
Remittances/GDP	14.8	14.9	14.4	14.0	13.9	14.6	15.5	16.1
Remittances/Tourist Expenditure	102.3	93.0	95.3	100.8	98.7	99.6	95.6	92.7
Remittances /Exports	73.7	129.0	143.2	124.3	118.2	130.7	148.9	175.7
Remittances/FDI (INFLOWS)	140.7	331.0	837.2	924.9	493.7	389.7	382.1	247.6
Remittances/Imports	23.7	34.8	36.2	31.0	31.9	33.3	36.5	44.2
International Accounts Unit Economic Information & Publications Department Research & Economic Programming Division Bank of Jamaica * Provisional ** Preliminary estimates + Revised								

Table 10

Remittances for Selected Countries													
US\$ Millions													
		Jan	Feb	Mar	Apr	May	Jun	Jul	Aug	Sept.	Oct	Nov	Dec
Mexico													
	2012	1506.4	1788.4	2090.8	2031.0	2342.7	2096.3	1860.2	1887.3	1663.7	1777.1	1695.0	1706.9
	2013	1461.9	1587.5	1773.0	1901.8	2034.1	1945.5	1841.0	1907.7	1795.7	1857.8	1690.8	1784.9
	2014+	1642.1	1719.2	2098.2	1976.3	2146.7	2043.3	1998.0	2004.2	1964.9	2042.1	1775.4	2234.6
	2015*	1626.9	1842.5	2254.2	2006.1	2190.9	2155.9	2234.9	2266.4	2055.1	2068.8	1887.9	2208.8
	2016*	1932.8	2082.0	2200.8	2173.4								
	<i>month/month growth rate (%):2015/2016</i>	<i>18.8</i>	<i>13.0</i>	<i>-2.4</i>	<i>8.3</i>								
	<i>CYTD growth rate (%):2015/2016</i>	<i>18.8</i>	<i>15.7</i>	<i>8.6</i>	<i>8.5</i>								
El Salvador													
	2012	267.3	314.8	364.0	332.2	348.3	318.2	330.4	315.5	302.7	329.8	299.3	388.5
	2013	280.3	300.4	336.5	354.5	357.3	322.0	331.3	322.7	315.4	331.9	311.0	394.5
	2014	283.0	312.2	376.7	354.5	384.4	353.4	351.9	340.8	333.4	342.3	317.9	403.7
	2015+	294.6	315.8	373.0	354.6	386.4	363.4	356.6	357.4	347.7	364.5	337.2	423.0
	2016*	305.7	353.0	386.4	384.1								
	<i>month/month growth rate (%):2015/2016</i>	<i>3.8</i>	<i>11.8</i>	<i>3.6</i>	<i>8.3</i>								
	<i>CYTD growth rate (%):2015/2016</i>	<i>3.8</i>	<i>7.9</i>	<i>6.3</i>	<i>6.8</i>								
Guatemala													
	2012	305.1	350.4	402.1	419.0	451.6	432.7	422.1	441.4	365.8	415.4	368.0	409.2
	2013	357.9	351.2	424.1	451.2	477.0	417.2	456.3	456.3	420.7	480.0	376.6	447.3
	2014	394.2	383.9	459.2	490.7	494.1	481.9	509.7	476.8	458.8	500.5	398.3	496.0
	2015+	407.4	432.0	556.5	503.8	519.0	536.3	573.7	527.3	538.4	583.8	508.7	598.1
	2016*	482.0	558.0	623.0	609.3								
	<i>month/month growth rate (%):2015/2016</i>	<i>18.3</i>	<i>29.2</i>	<i>12.0</i>	<i>20.9</i>								
	<i>CYTD growth rate (%):2015/2016</i>	<i>18.3</i>	<i>23.9</i>	<i>19.1</i>	<i>19.6</i>								
Jamaica													
	2012	149.7	167.2	187.9	180.1	166.7	175.2	168.9	170.1	159.4	163.4	157.8	196.2
	2013	154.0	160.1	178.4	180.1	181.5	166.0	170.5	177.8	163.4	170.7	167.8	194.5
	2014	159.3	168.3	187.3	180.5	188.7	168.3	183.2	183.9	182.0	179.7	170.8	204.9
	2015	166.2	167.8	194.0	187.2	189.4	188.4	190.0	185.6	183.4	191.7	171.3	210.9
	2016*	160.3	180.1	196.9	202.7								
	<i>month/month growth rate (%):2015/2016</i>	<i>-3.6</i>	<i>7.3</i>	<i>1.5</i>	<i>8.3</i>								
	<i>CYTD growth rate (%):2015/2016</i>	<i>-3.6</i>	<i>1.9</i>	<i>1.7</i>	<i>3.5</i>								
* Provisional													
..- data not available													
+ Revised													
Sources : Central Banks of each country . Please note that the information above reflects the most accurate data to date,as such, these figures are subject to revision.													
International Accounts Unit Economic Information & Publications Dept. Research & Economic Programming Division Bank of Jamaica													

Table 11

Inbound by Source Country (US\$MN)^*													
2014	Jan	Feb	Mar	Apr	May	Jun	Jul	Aug	Sep	Oct	Nov	Dec	Total
USA	93.8	103.4	116.7	110.0	112.0	100.9	107.5	107.2	107.7	107.6	102.1	119.3	1288.2
<i>of which Remittance Companies</i>	79.5	87.8	100.3	93.9	96.5	89.8	91.4	93.3	91.8	92.8	85.4	105.6	1108.2
UK	27.0	26.7	28.7	28.4	30.7	27.3	29.9	29.6	28.3	27.7	26.8	35.9	347.1
<i>of which Remittance Companies</i>	22.9	22.7	24.6	24.3	26.4	24.3	25.4	25.8	24.1	23.9	22.5	31.8	298.7
CAN	16.7	16.3	19.0	19.6	21.6	20.8	23.7	24.5	23.8	22.4	19.9	22.6	250.6
<i>of which Remittance Companies</i>	14.1	13.9	16.3	16.7	18.6	18.5	20.2	21.3	20.3	19.3	16.6	20.0	215.7
CAY	9.8	9.8	10.5	10.2	11.1	9.7	10.1	10.2	9.9	9.8	10.1	12.9	124.0
<i>of which Remittance Companies</i>	8.3	8.3	9.0	8.7	9.6	8.6	8.6	8.9	8.5	8.4	8.4	11.4	106.7
Other	12.0	12.2	12.4	12.4	13.4	9.7	12.0	12.4	12.3	12.1	12.0	14.2	147.1
<i>of which Remittance Companies</i>	10.2	10.3	10.7	10.6	11.5	8.6	10.2	10.8	10.5	10.5	10.0	12.6	126.5
TOTAL	159.3	168.3	187.3	180.5	188.7	168.3	183.2	183.9	182.0	179.7	170.8	204.9	2157.0
<i>of which Remittance Companies</i>	134.9	143.1	160.9	154.2	162.6	149.8	155.8	160.0	155.2	154.9	143.0	181.5	1855.8
Inbound by Source Country (US\$MN)^*													
2015	Jan	Feb	Mar	Apr	May	Jun	Jul	Aug	Sep	Oct	Nov	Dec	Total
USA	100.7	101.6	123.9	119.6	119.8	117.6	119.2	116.3	116.3	121.8	107.6	129.8	1394.2
<i>of which Remittance Companies</i>	84.4	92.0	106.2	101.7	105.2	103.6	104.8	101.7	101.9	106.0	91.7	114.4	1213.6
UK	26.1	26.4	27.1	26.1	27.0	27.4	27.3	27.0	27.3	28.4	26.4	34.9	331.4
<i>of which Remittance Companies</i>	21.9	21.1	23.2	22.9	24.6	24.1	24.0	23.6	23.9	24.7	22.5	30.8	287.3
CAN	17.2	17.3	18.1	17.5	18.9	20.5	21.0	20.6	19.6	20.4	16.6	19.2	226.9
<i>of which Remittance Companies</i>	14.4	13.1	15.5	16.1	18.6	18.1	18.4	18.0	17.2	17.7	14.2	16.9	198.3
CAY	10.1	10.2	11.3	10.9	10.6	10.3	10.4	10.3	8.5	9.0	8.8	13.2	123.5
<i>of which Remittance Companies</i>	8.5	8.3	9.7	9.0	9.3	9.1	9.2	9.0	7.4	7.8	7.5	11.7	106.3
Other	12.2	12.3	13.7	13.2	13.0	12.6	12.1	11.6	11.7	12.2	11.8	13.8	150.1
<i>of which Remittance Companies</i>	10.2	10.3	11.7	11.0	11.4	11.1	10.6	10.1	10.2	10.6	10.1	12.2	129.5
TOTAL	166.2	167.8	194.0	187.2	189.4	188.4	190.0	185.6	183.4	191.7	171.3	210.9	2226.0
<i>of which Remittance Companies</i>	139.3	144.8	166.4	160.7	169.1	166.0	167.1	162.4	160.7	166.7	145.9	186.0	1935.0
International Accounts Unit Source: Bank of Jamaica Estimates are based on information submitted by Remittance Companies ^ Revised *Provisional													
Inbound by Source Country (US\$MN)^*													
2016	Jan	Feb	Mar	Apr	May	Jun	Jul	Aug	Sep	Oct	Nov	Dec	Total
USA	101.6	118.4	129.6	131.5									481.1
<i>of which Remittance Companies</i>	86.7	99.8	113.2	112.7									412.3
UK	23.6	25.2	26.9	27.0									102.8
<i>of which Remittance Companies</i>	20.1	21.3	23.5	23.2									88.1
CAN	13.8	14.5	16.9	19.7									64.9
<i>of which Remittance Companies</i>	11.8	12.2	14.8	16.9									55.6
CAY	10.0	10.2	11.5	11.5									43.2
<i>of which Remittance Companies</i>	8.5	8.6	10.1	9.8									37.0
Other	11.3	11.8	11.9	13.1									48.1
<i>of which Remittance Companies</i>	9.6	10.0	10.4	11.2									41.2
TOTAL	160.3	180.1	196.9	202.7									740.0
<i>of which Remittance Companies</i>	136.7	151.8	171.9	173.8									634.2
International Accounts Unit Source: Bank of Jamaica Estimates are based on information submitted by Remittance Companies ^ Revised *Provisional													

Table 12

Outbound by Recipient Country (US\$MN)**													
2014	Jan	Feb	Mar	Apr	May	Jun	Jul	Aug	Sep	Oct	Nov	Dec	Total
USA	12.5	10.6	9.9	12.0	9.8	8.5	13.8	13.4	11.6	11.5	12.1	12.8	138.3
CAN	1.2	1.3	1.4	1.5	1.1	1.0	1.5	1.3	1.3	1.4	1.3	1.4	15.7
UK	1.0	0.8	0.8	1.0	0.9	0.6	0.9	0.6	0.8	0.8	0.8	0.8	9.9
CHINA	0.8	0.3	0.5	1.0	1.0	0.6	0.8	0.6	1.6	1.4	0.8	0.8	10.3
Other	3.8	3.5	3.8	5.6	4.3	4.2	5.1	4.4	4.6	4.3	4.4	5.0	53.0
TOTAL	19.3	16.5	16.4	21.1	17.1	14.8	22.1	20.4	19.9	19.4	19.5	20.8	227.3

Source: Bank of Jamaica

Estimates are based on information submitted by Remittance Companies

^ Revised

*Provisional

Outbound by Recipient Country (US\$MN)**													
2015	Jan	Feb	Mar	Apr	May	Jun	Jul	Aug	Sep	Oct	Nov	Dec	Total
USA	10.7	10.2	10.8	12.0	7.9	8.7	13.7	13.5	12.1	11.8	12.0	14.1	123.5
CAN	1.3	1.5	1.5	1.4	0.8	1.0	1.5	1.3	1.4	1.4	1.4	1.6	14.6
UK	0.9	0.8	0.8	1.1	0.5	0.6	0.8	0.8	0.8	0.8	0.9	1.1	8.9
CHINA	1.4	0.7	0.8	0.9	1.4	0.8	1.0	0.8	1.1	1.6	1.2	1.1	11.7
Other	4.6	5.5	5.6	5.4	3.7	4.1	5.1	4.6	4.4	4.6	4.2	4.5	51.8
TOTAL	18.9	18.7	19.6	20.9	14.3	15.2	22.1	21.0	19.7	20.4	19.6	22.4	232.8

Source: Bank of Jamaica

Estimates are based on information submitted by Remittance Companies

^ Revised

*Provisional

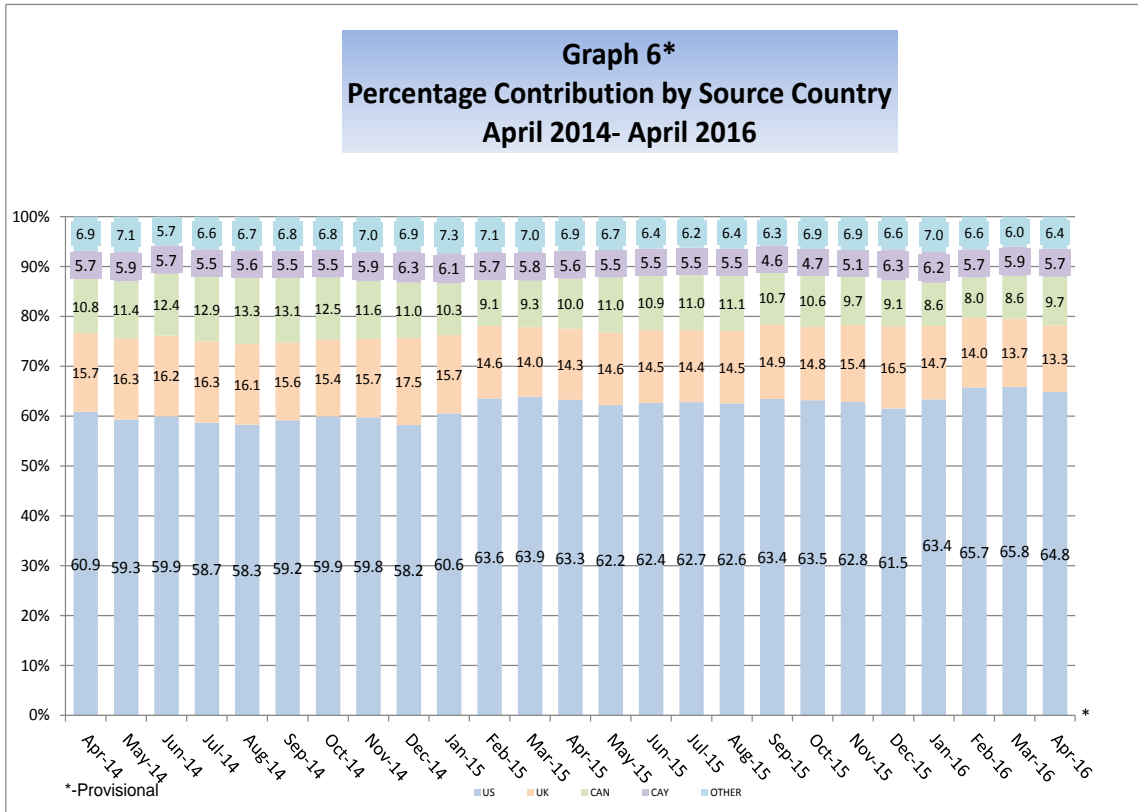
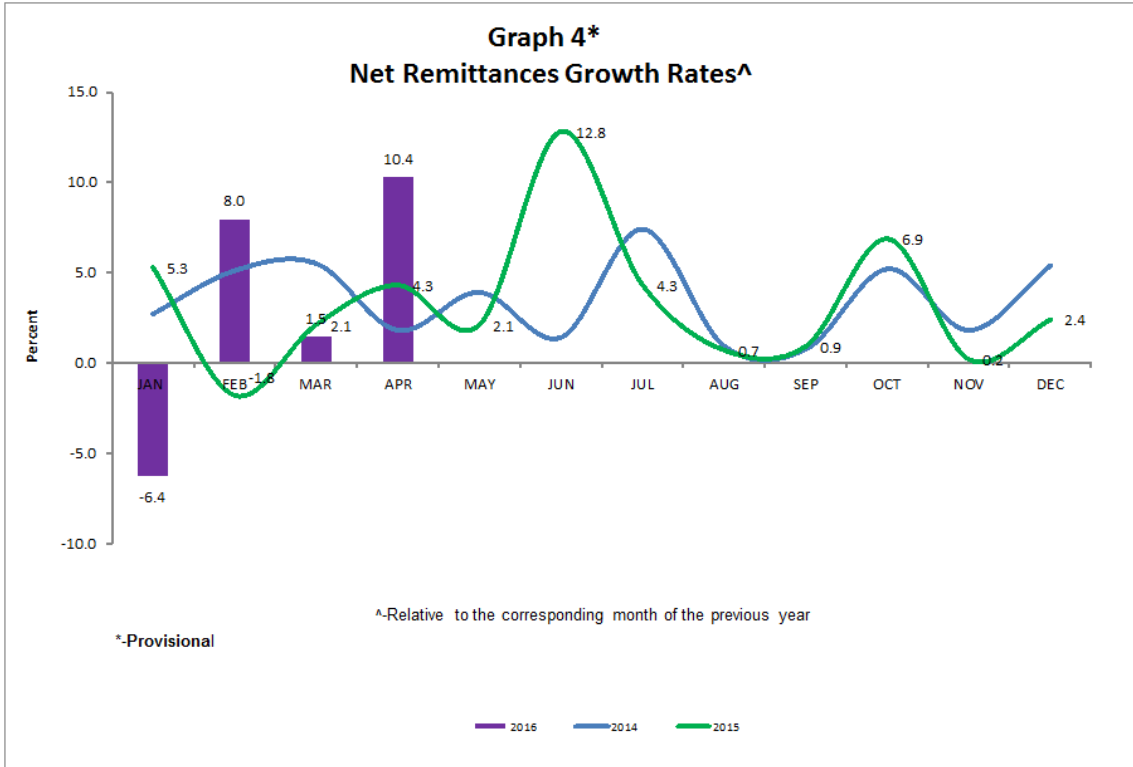
Outbound by Recipient Country (US\$MN)**													
2016	Jan	Feb	Mar	Apr	May	Jun	Jul	Aug	Sep	Oct	Nov	Dec	Total
USA	13.7	11.6	11.7	11.3									48.4
CAN	1.5	1.5	1.6	1.3									5.9
UK	0.9	0.8	0.9	0.9									3.5
CHINA	1.5	0.5	0.8	1.1									3.9
Other	4.6	4.6	4.9	4.6									18.7
TOTAL	22.3	19.0	19.8	19.2									80.4

Source: Bank of Jamaica

Estimates are based on information submitted by Remittance Companies

^ Revised

*Provisional





BANK OF JAMAICA

Nethersole Place

P.O. Box 621

Kingston, Jamaica

Telephone: 876 922 0750

Internet: www.boj.org.jm